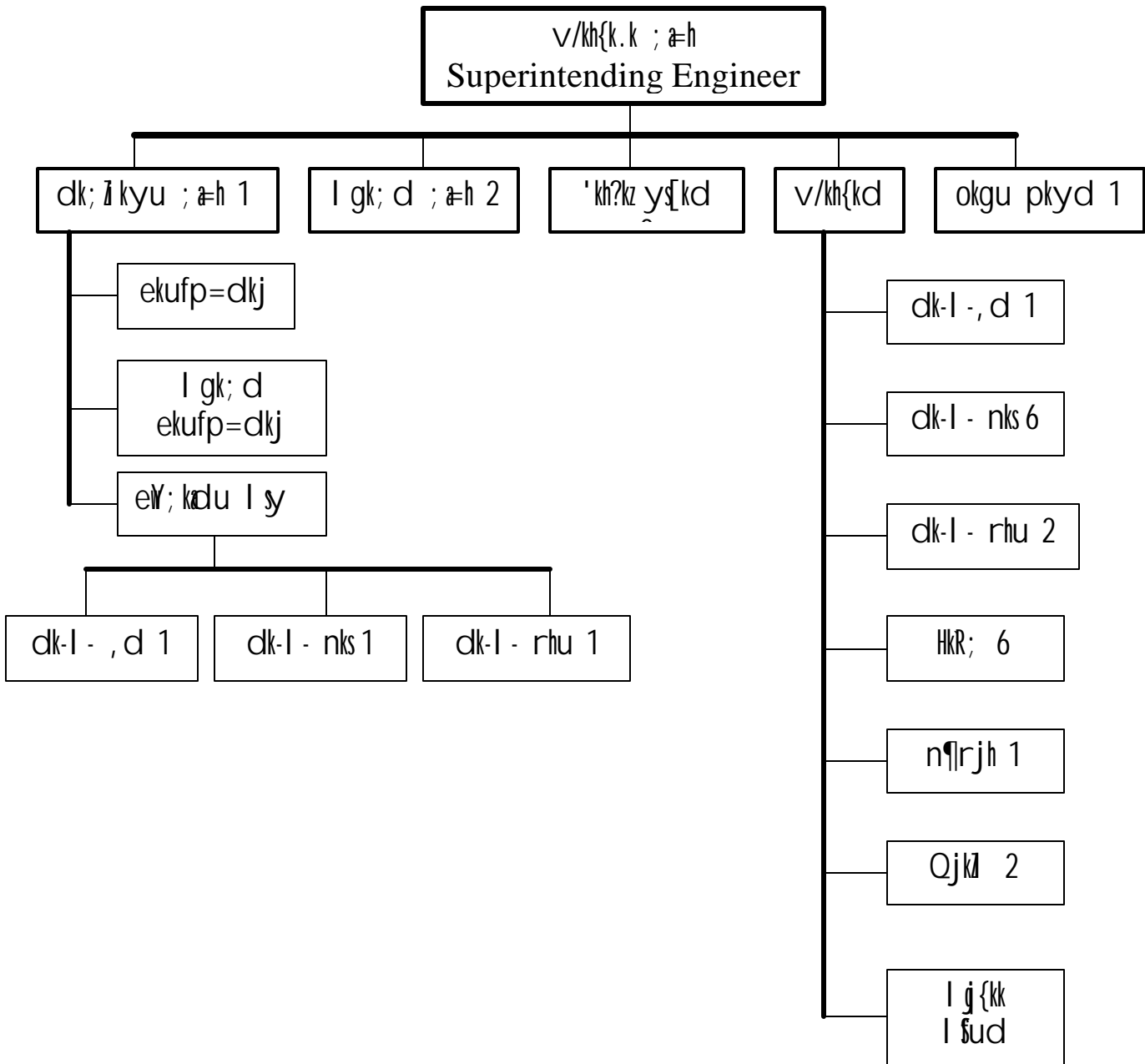


dk; kŷ; v/kh{k.k ; æh ¼ pk@l dkk½ jhok e-i zi w{ksofo-dafy- jhok dk l j pukRed <kpk



dk; kȳ; v/kh{k.k ; a=h jhok oRr ds varx̄r dk; Z , oa  
dr̄; dh tkudkj̄h

Ø-	bdkbz , oa d{k	dk; Z fu/kk̄ .k
1	i z kkl fud d{k	v/kh{k.k ; a=h dk; kȳ; , d i z kkl fud bdkbz gS ft I ea LFkki uk] jkdM+ dk; Z jktLo] fof/kd] I keku; , oa vU; n̄sud dk; Z
2	ys[kk	bl dk; kȳ; ea vyx I s dk; Z dk I Ei knu ugha gkrk gA
3	Hk. Mkj	bl dk; kȳ; ea vyx I s Hk. Mkj dk; Z dk I Ei knu ugha gkrk gA e. My ea {k=h; Hk. Mkj .k dk dk; kȳ; I ruk ea LFkfi r gA
4	vfHkys[kkxkj	bl dk; kȳ; ea vyx I s vfHkys[kkxkj ugha gA
5	vU; dkbz tkudkj̄h	dk; kȳ; ea I eLr I D I u tS s LFkki uk] fcy] I keku; ] jkdM+ jktLo] dk; Z vkfn ds }kj k Okbyka dk j [k j [kko vi us vi us d{k eafd; k tkrk gA

dk; kzy; v/kh{k.k ; æh jhok oRr ds vaxr  
vf/kdkfj; ka dk dk; l vkoal/u

Ø-	uke	in	mi yfC/ k	drD;
1	Jh vks, l -i f j g k j	v/kh{k.k ; æh	32818	i z k k l f u d fu; æ.k] j k t L o 0; o L F k k i u , o a i ) f r e a f o d k l
2	Jherh v#.kk JhokLro	dk; i k y u ; æh	28857	vf/kdkj {ks= ds vaxr e. My dh l E i f R r ds f o o j . k ] d j k ; s x ; s dk ; k a dk e v ; k a d u l e l o ; d ] M k v k d y D l u ] m P p dk ; k z y ; d k s j k t L o l æ a k h t k u d k j h n s u k ] Ø ; ] d s k ] y h x y l D l u , o a o R r dk ; k z y ; ds v l ; dk ; k z y ; h u x f r f o f / k ; k a d s l æ a k e a
3	Mh-i-h- fl g	dk; i k y u ; æh	29689	dk; i, L V h e v ] l k e k l ; f o / k k u l H k k i z u k a d s m R r j m P p dk ; k z y ; d k s i f " k r d j u k ] f o   r f u ; k e d v k ; k x l æ a k h t k u d k j h , p V h m i H k k D r k ] , p V h e h V j j h f M a x
4	, e i h f l g	l g k ; d ; æh	24905	d y D V j f t y k j h o k d h v / ; { k r k e a x f B r f t y k Ø ; l f e f r f o   r y k b u f u e k z k l æ a k h dk ; k z y ; h u dk ; i m i H k k D r k v k a d h f ' k d k ; r ] f o   r p k j h d s i d j . k ] b u t h z , l d e v i d j . k d k s f j 0 ; w l æ a k h i d j . k

dk; kȳ; ea vi uk; h tkus okyh fu.kȳ ifØ; k U/s

### 4.1(b) (iii) oRr dk; kȳ; jhok

uLrh fujkdj.k l æf/kr  
dk; bkgh , oa dFku

i R; d Lrj ij fujkdj.k  
djus okys vf/kdkfj ; ka dk  
fooj.k

fu.kȳ ysus okyk  
vf/kdkjh

l æf/kr d{k dsfyfi d }kjk dk; i kyu ; æh@v/kh{k.k ; æh

- 1- U; k; ky; hu i d j .k  
ea e[ ; vffk; rk
- 2- LFkki uk , oa vU;  
dk; kȳ; hu i d j .kka  
ea v/kh{k.k ; æh

l ijokbtjh vFkkfjVh vkQhl j  
Vwgke , dkmUVfcy vuqkx vf/kdkjh  
, oa i R; d l DI u l s d{k i Hkkjh

4- dk; kȳ; }kjk l e; l hek ea dk; Zfui Vkus rFkk xqkoRrk dk eki n.M u/s 4.19b) (iv)

- A. l LFkk }kjk l e; ] uke fu/kkȳ.k dh tkudkjH dePkfj ; ka ds i d j .k fujkdj.k  
grq , d ekg i kDdyu Lohd' l ækh 15 fnu , oa mi HkkDrkvka ds i d j .k l ækh  
tkudkjH 15 fnu ds vanj fujkdj.k grq fu/kkȳjr gks U; k; ky; hu i d j .kka ea  
U; k; ky; hu vkns'kkud kj fu/kkȳjr l e; l hek ij dk; Zfu"i kfnr fd; k tkrk gA
- B. l LFkk ea dk; Z dseki n.M ds vuq kj xqkoRrk dk fu/kkȳ .k fd; k tkrk gA
- C. o"lz ea Vka Qkej ehVI Z l j {kkRed midj.kka dk okf"kd ifronu ctV bR; kfn  
dk fu/kkȳ .k fd; k tkrk gA

5- dk; kȳ; ea mi ; ksx gkus okys mi yC/k vf/kfu; e fu; e] jx; w'sku] eSuwy ifji =  
u/s 4.19b) (v)

- 1- vf/kfu; e  
1/2 fo | r vf/kfu; e 2003

- 1/2 cdk; k ol yh vf/kfu; e 1961
- 2- fu; e% byDVfI Vh I lykbZ dkm 2004
  - 3- jx; mys'ku% dEi yh'ku vkQ jx'ys'ku , .M LV\$.Max vkmj 14.Fkki uk1/2
  - 4- esuy% d9 esuy Mh vks ih j08; weesuy
  - 5- ifji = %
    - 1- fu; fDr , oa inkbufr I cdkh
    - 2- foHkxh; tkp
    - 3- I okfuorR
    - 4- i dku@x8; y/h
    - 5- vodk'k
    - 6- th-ih-, Q-
    - 7- b0heV
    - 8- ; k=k@fpdRI k
    - 9- oru fu/kkj .k
    - 10- ofj"Brk , oa LFkk; hdj .k
    - 11- th-Vh-vkbZ, I -
    - 12- gk; j i&Ldsy
    - 13- fo|q NW I cdkh
    - 14- V; wku Qhl
    - 15- QDVh , DV
    - 16- pfj= I R; ki u
    - 17- edku vfxe
    - 18- oru@Mh-, - 0; oLFkki u HkRrk
    - 19- ifjokj fu; kstu
    - 20- xfrjks'k HkRrk
    - 21- dkiI y Qhl
    - 22- jkf=i kyh HkRrk@/kykbZ HkRrk
    - 23- jkdM+HkRrk
    - 24- LFkkukarj .k
    - 25- tle frfFk I R; ki u
    - 26- I e; c) inkbufr ; kstuk
    - 27- efgyk ; ks mRi hMh
    - 28- vfuok; Z I okfuofRr
    - 29- da uh xBu I cdkh
    - 30- ehVj okpd ; kstuk Ldhe
    - 31- vuq) ii = 1/2 ktLo1/2 fo|q duD'ku I cdkh
    - 32- fo|q dj] mi dj] VsjQ , oa vL; pktit I cdkh
    - 33- yoj dka/DV , okMZ ifji = 1/2 dk; Z d{k1/2

- 34- cgeftyk bekjr dsfo | r duD'ku l ædkh ifji =
- 35- voškkfud dkykuh dsfo | r duD'ku l ædkh
- 36- l fcl Mh vku VfjQ jšv

bl ds vfrfjDr e.My@dāuh }kjk l e; l e; ij tkjh fd;s tkus okys  
fu;e dh tkudkjh vyx l snh tkoxhA

6- dk; kȳ; ea l ækkfjr fd;s tkus okys fofHklu vfhkys[ kka dh l pph rFkk mudk  
oxhġdj.k u/s 4.19b) (iv)

Ø	vfhkys[k dk uke	vfhkys[ kka dk i dġkj ekbØks fQYe jft- cØl	vfhkys[ kka dh i dġfr , oa fo" k; l pph	vfhkys[ kka dh vof/k
1	Qkby] i š j] jftLVj] LFkk- yhxy l sy , oa vU; d{k l s l æġ/kr	mi HkkØrk , oa deġkfj; ka ds U; k; ky; hu i dġj.k l s l æġ/kr uLrh	i {k dġj }kjk nk; j i dġj.k ij U; k; ky; ds fu.kȳ l s l æġ/kr	yxHkx 10 o" kȳ
2	Qkby i š j LFkki uk] fcy] dŠk] jktLo l s l æġ/kr	deġkfj; ka dh l Øk i ġLrdk 0; fDrxr uLrh] jftLVj , oa vU; vfhkys[k	fu; fer dk; l	deġkfj; ka dh l Øk i kȳġ l s

## **GRADATION AND CONFORMATION**

<b>S.No</b>	<b>SUBJECT</b>
1.	Conformation of J.E.
2.	Updating gradation list of class III Regional codes as on 1.2.88 (T&D)
3.	Gradation list of Vehicle Driver as on 1.4.88
4.	Provisional Gradation list of store asstt REWA circle as on 1.4.80
5.	Provisional gradation list L.D.C. as on 1.4.80
6.	Gradation list of LINE INSPECTOR (line Asstt. Gr.I) as on 1.4.83
7.	Gradation list of METER-INSPECTDR
8.	Gradation list of L.M. (line Asstt. Gr II)
9.	Gradation list of METER-FIXER as on 1.4.83
10.	Gradation list of ADM as on 1.4.83
11.	Gradation list of TRACER as on 1.4.83
12.	Gradation list of TA GR-ii As on 1.4.83
13.	Prouisional Gradation list of class II UDC as on 1.4.83
14.	Final Gradation list of 5/ GUARD as on 1.4.83
15.	Gradation list Class III cadre as on 1.4.85
16.	Publication of provisional gradation list of Class IV as on 1.4.83 5/GUARD, PEON, etc.
17.	Publication of provisional gradation list of OA-Gr. III as on 1.4.83
18.	Gradation list of STORE asstt. as on 1.4.83 (CENTRAL REGION)
19.	Gradation of conformation of AE as on 1.4.83
20.	Publication of gradation list of class IV as on 1.4.83 PANNA Dn.
21.	Publication of gradation list of DRIVER as on 1.4.83
22.	Publication of gradation list of class IV as on 1.4.83.

23.	Publication of gradation list of J.E. as on 1.4.83 /1.4.87.
24.	Gradation list of class-III employee as on 1.4.87
25.	Gradation list of S/GUARD as on 1.4.80.
26.	Gradation list of SO/OA Gr-I as on 1.4.88.
27.	Confirmation of OA Gr-I /S.O.
28.	Final gradation list of AE (T&D)
29.	Provisional gradation list of STENO .
30.	Gradation list of line Section I,II,III.
31.	Conformation of class III as on 1.4.83
32.	Conformation of class III&IV.
33.	Gradation list of class I&II.
34.	Preparation and publication of gradation list class III cadres as on 1.4.90
35.	Confirmation of MOTOR-DRIVER as on 1.4.89
36.	Gradation list of S.E.s
37.	Gradation on list of PEONS.
38.	Gradation list of Helpers.
39.	Misc correspondence.
40.	Gradation list of helpers as on 1.4.93.
41.	List of class III & IV employee. Technical working as on 1.4.95 for gradation purpose.
42.	Gradation list of class IV as on 1.4.90.
43.	Gradation list of T.A. Gr I as on 1.4.95.
44.	Gradation list of OA Gr. III.
45.	Gradation list of ALM
46.	Confirmation of T.A. Gr. II
47.	Gradation list of DAFTARI's

## PANEL

S.No	SUBJECT
1.	PANEL EDR HELPER GR. III & II
2.	PANEL FOR STENOGRAPHER
3.	PANEL FOR SECTION OFFICER /AO
4.	PANEL FOR STENOGRAPHER SEL GR.II
5.	PANEL FOR LINE SUPERVISOR GR. I& II
6.	PANEL FOR A.E.
7.	PANEL FOR TRACER (D,O.A. GR-I)
8.	PANEL FOR T.A. GR-I (OPERATOR)
9.	PANEL FOR ADM/DM
10.	PANEL FOR LINE SUPERVISOR GR-III
11.	PANEL FOR T.A. GR-II (ASSTT OPERATOR)
12.	PANEL FOR CLEANER
13.	PANEL FOR OA GR III STORE ASSTT AND METER READER
14.	PANEL FOR TA GR-II (OPERATOR DEPTT EMPLOYEE)
15.	PANEL FOR ORDERLY
16.	PANEL FOR PEON
17.	PANEL FOR DRIVER
18.	PANEL FOR LINE ATTD GR-I ALM
19.	PANEL FOR OA GR-II
20.	PANEL FOR W/C OA GR-III
21.	PANEL FOR T.A. GR-II (TRAINEE)
22.	PANEL FOR OA GR-III HAVING TYPING QUALIFICATION
23.	PANEL FOR THE POST LINE ASSTT GR-I (LINE INSPECTOR)

24.	PANEL FOR LINE MAN
25.	PANEL FOR LINE ATTENDENT GR-I ALM
26.	PANEL FOR OA GR III (T) TYPIST
27.	PANEL FOR CR CORRESPONDENCE
28.	PANEL FOR OA GR-I
29.	PANEL FOR OA GR-II
30.	PANEL FOR
31.	PANEL FOR APPOINTMENT FOR DEPARTMENTATION CANDIDATES OA GR-III (T)
32.	PANEL FOR DRIVER
33.	PANEL FOR CLEANER
34.	PANEL FOR THE POST OF REGULARISATION OF PERSONS BORN ON W/C ESTT.
35.	PANEL FOR DAFTARI
36.	PANEL FOR S/GUARD
37.	PANEL FOR LINE ASSTT GR-II
38.	PANEL FOR OA GR-I
39.	PANEL FOR ALM (ATTEMDEMT GR- I)
40.	PANEL FOR LINE INSPECTIOR
41.	PANEL FOR OA GR-III (I) OUTSIDER
42.	PANEL FOR OA GR-III (I) DEPTT CANDIDATE
43.	PANEL FOR S/GUARD- 1992
44.	PANEL FOR LM
45.	PANEL FOR SWEEPER
46.	PANEL FOR
47.	PANEL FOR REDESIGNATION OF LINE STAFF.

48.	PANEL FOR THE POST OF TESTING GR-II
49.	PANEL FOR THE T.A. GR-II (TRAINING)
50.	PREPARATION OF PANEL FOR THE POST OF PERSONAL ASSTT.
51.	PANEL FOR vks  kfxd if'k{k.k i ktr (ITI) mEehnokjka dk ehVj jhfMx grqp; u
52.	T.B.P.S. dk-l - Jskh , d
53.	T.B.P.S. dk-l - Jskh nks
54.	T.B.P.S. ykbu eſu (Line asstt. Gr-II)
55.	T.B.P.S. l gk; d ykbu eſu (Line Asstt. Gr-I)
56.	T.B.P.S. vfrfjDr dk-l - Jskh , d , oanks (D.M.)
57.	T.B.P.S. vfrfjDr LM, ALM & Other tech mecal. class III
58.	T.B.P.S. l j{k k l ſud
59.	T.B.P.S. T.A. Gr. II & I
60.	T.B.P.D.M.
61.	i ſuy fof/k l gk; d
62.	PANEL N.M.R ½fnukad 31-12-88 ds dn j [ks x; s deſpkjh ¼01-04-2003½ l s NMR dks fo'kſk HkRrk Lohdir djus ckora
63.	ykbu l ijokbtj xM II in ea Upgrade .djus dh tkudkjh (Upgradation)
64.	Redeployment of excess DRIVERS to the post of T.A. Gr. II.
65.	FILLING the recant posts of T.A. Gr-ii amongst the line Att. Gr III /II and the persons on NMR who are H.S.S.C. pass.
66.	Utilization of Junior O.A. Gr-III/I for LT meter reading works.
67.	Panel OA Gr-III
68.	Panel sr STENO TO PA/PS
69.	vud ſpr tkfr] tutkfr ox/dks vkj {k.k inku djus l s l ſf/kr v) bkr'kd tkudkjh A
70.	Selection & Training of employee for induction of section officer in the FINANCE & A/C wing.

71.	ENGAGEMENT OF PRIVATE electricians working in final areas.
72.	இது டி கி; டி யு கி 2004&05 A
73.	இது யு கி 2004&05

## **SUSPENSE FILES**

<b>S.No</b>	<b>SUBJECT</b>
1.	VIP REFERENCE
2.	APPOINTMENT OF DT/TA.
3.	AGE OF SUPERANNLLATION
4.	GRANT OF PERMISSON FOR PURCHASE OF PLOT.
5.	SANCTION OF L.T.C.
6.	APPOINTMENT ON COMPASSIONATE GROUND
7.	fglunh dlk; Z iz kkyh ifr; kfxrk ijh{kkA
8.	TRAINING OF L.M.
9.	HIGHER PAY SCALE FOR CLASS III & IV
10.	SANCTION OF G.P.F. LOANS
11.	NON PAYMENT OF SALARY- TA/M. BILLS
12.	GRANT OF MOTOR CYCLE ADWANCE.
13.	SANCTION OF ADDL. WAGES.
14.	GRANT OF PERMISSION FOR APPEARING IN THE EXAMINATION FOR HIGHER STUDIES.
15.	ISSUE OF IDENTITY CARDS.
16.	APPLICATION FOR THE POST OF G.T.
17.	ACCOUNTS TRAINING FOR OA GR I&II
18.	HOUSE BUILDING ADWANCE.
19.	IMPLEMENTATION OF FAMILY PLANNING PROGRAMME
20.	e-iz rdudhd depkj h l ak l si = 0; ogkj
21.	e-iz fo- deZ i =ki kf/k vflk; ark l ak l si = 0; ogkj
22.	e-iz fo- deZ turk ; fu; u l si = 0; ogkj

23.	e-iz de/ osyQs j , l kfl ; d u l s i = 0; ogkj
24.	e-iz fctyh deþkjh egkl æk l s i = 0; ogkj
25.	xteh.k fo   r l gdkjh l fefr deþkjh l æk l s i = 0; ogkj
26.	e-iz fo- deþkjh dkæd l s i = 0; ogkj
27.	e-iz fo- deþkjh dkæd l s i = 0; ogkj
28.	e-iz fo- deþkjh l æk QMjsku l s i = 0; ogkj
29.	Annual Immovable property return.
30.	l øk fuorR vf/kdkfj ; k@deþkfj ; ka dks e. My dh vkj l s ?kMh i nku djus l ækh i = 0; ogkjA
31.	Allotment of Duty.
32.	Transfer of records of chhatarpur circle & Rewa Circle
33.	Awards/medal for mentorious work.
34.	Submission of Estt/Budget and correspondence.
35.	Payment of Bonus/Exgratia
36.	Cash handling allowance.
37.	Reimbursement of tution fees.
38.	Sanction of Festival advance.
39.	Sanction of grain adwance.
40.	acceptance of surety of QA gr-III (T)
41.	Appointment of ITI apprentice.
42.	Pension cases.
43.	Return of SC/ST
44.	Information about requlerisation of NMR employees & appointment & MNR
45.	Return of vacancy position.
46.	Return of AE/JE
47.	Return of OA GR-II
48.	Return of OA GR-I , SO.

49.	Journey approval for STM Dn.
50.	Journey approval for Sr. AO Rewa
51.	T.A. bill correspondence.
52.	Miscellaneous correspondence DE .
53.	Courespondence of EPF/CPF.
54.	Transfer of Tracer
55.	Transfer of meter inspector.
56.	Transfer of line man.
57.	Transfer of OA GR-II (UDC)
58.	Transfer of line inspector.
59.	Transfer of OA Gr III (LDC)
60.	Transfer of T.A. Gr-II
61.	Transfer of ALM
62.	Transfer of HELPER.
63.	Transfer of JE
64.	Transfer of OA GR-I
65.	Transfer of METER READER
66.	Transfer of MOTOR DRIVER
67.	Transfer of PEON
68.	Transfer of S/GUARD.
69.	Transfer of FARRASH
70.	Transfer of DAFTARI
71.	Transfer of STORE ASSTT.
72.	Transfer of METER FIXER
73.	Transfer of CLEANER
74.	Transfer of AE

75.	Transfer of BOARDS ORDER OF OFFICERS.
76.	Change of surname
77.	Man fower employees mts power section.
78.	Medical courespondence.
79.	MR. DE
80.	Anticident verification file.
81.	Verification of date of Birth employees.
82.	Stepping of pay of OA Gr III /All cadds.
83.	Submission of LPC.
84.	Transfer of steno.
85.	fuoKpu grq de p kfj ; ka , oa okgu dh vko' ; dA
86.	Sanction of stagnation allowance.
87.	Transfer of S.O.
88.	Duty allotment of S/Guard
89.	Protection of pay work charges.
90.	Income Tax.
91.	Voluntary Retirement.
92.	Inspection of D/C SE/REWA
93.	Computerisation of pay Bills.
94.	e-iz iz kkl fud {ks= ea fu; kst u 31 expz 92 %v) Z kkl dh; I h.Fkk; a rFkk I koZ fud mi Øe½
95.	Quater Allotment of REWAcircle.
96.	Miscellaneous complaint of STM Dn.
97.	Miscellaneous complaint of Rewa (North)
98.	Miscellaneous complaint of Rewa (South)
99.	egjk"Vª i kUr ds mLekukckn ftys ea fn- 30-09-93 dks vk; s Hkh"K.k Hkw dEi I s i hfMf i fjokj ka dh I gk; rk@I pkeh ygj ka ds dkj .k vk; s rQku I s I gk; rk fo"K; dA

100.	Misc complaint of A.O. REWA
101.	i ki VhZ jftLVj j [kus ckorA
102.	fo/kku I Hkk iZuA
103.	vodk'k vkonu i = nus ckorA
104.	Quarterly return of AE
105.	Vehicle Allowance.
106.	Annual Inspection Inspected by CE(RR) Rewa
107.	tkfr iek.k i = ckorA
108.	ykd; Dr dk; ky; I sikr idj.kka I ckh tkudkjA
109.	vug tkfr@vugtu tkfr rFk fi NMs oxZ I sl c/kr v) bkr'kd tkudkjA
110.	LFkkuh; ysk I puk i plZ AG Audit
111.	fof/k idkSB dk xBu
112.	Qykbx Ldk; M (E.E. VIG.)
113.	ehVj jhfMx dk dk; Z Bds ij djus I ckh ehVj okpd ; kst uk
114.	i dku idj.k Lohdfr ckorA
115.	NRrhI x<+jkt; ds fuekZk dh i wkZ r\$ kjh vf/kdkjh@depkjh dh i kFkfedrka
116.	jktLo ol yh (Revenue Realization )/ RMS
117.	STC orrdk; ky; jhok sl ektr gkus ij I kexh vfhky[kk dk vknku inkuA
118.	dk; i ky ; a-h jhok fMohtu I kd k; Vh jhokA
119.	dk; i ky ; a-h fl Vh fMohtu 2-2-04
120.	I w ks eks/ks fi Vh'ku@fu; ked vk; kxks
121.	i nkbufr vkn'sk
122.	Implementation of model competency DFID project.
123.	depkjh I eL; k fuokj .k f'kfojA
124.	f'kd; r fl Vh fMohtu jhokA
125.	cd dsek/; e I sekfl d oru , oa vU; ns dka dk Hkqrku fd; s tkus ckorA

126.	Pending correspondance (Section wise)
127.	f'kdk; r STC fMohtu e-iz jkT; fo-e- jhok
128.	vf/kdkjh@depkjh   ello;   fefrA
129.	f'k- fo: ) Jh vkj-i-h- i k.Ms Sr. AO Rewa.
130.	Duty Allotment of revenue collection .
131.	Right to information Act-2005 implement action
132.	Right to information Act-2005 implement action there of.
133.	f'kdk; r cBqBi j forj.k dlnz
134.	puk dk vf/kdkj vf/kfu; e 2005

## CIRCULARS ¼ fji = ½

S.No	SUBJECT
1.	xP; ¼h GRATUITY
2.	l okefDr RETIREMENT
3.	; fu; u UNION
4.	PART TIME DEGREE COURSE
5.	KIT MAINT ALLOWANCE
6.	L.T.C.
7.	APPOINTMENT COMPASS ONATE GROUNDS
8.	EB & INCREMENT
9.	CREATION OF POST ORDER
10.	REVISION OF PAY SCALE 1.4.84
11.	CONFIRMATION & GRADATION
12.	MEDICAL
13.	G.T.I.S.
14.	BONUS
15.	HIGHER PAY SCALE
16.	ADDL IMPREST/TA MEDICAL
17.	ADDITIONAL WAGES
18.	GPF CPF EPF
19.	EL MEDICAL LEAVE
20.	COMPANSSIONATRY ALLOWANCE
21.	HOUSE RENT
22.	CASUAL LEAVE
23.	INCOME TAX

24.	OUT DOOR DUTY ALLOWANCE
25.	OUT SIDE JOB
26.	CREATION OF POST NORM
27.	REVIEW COMMITTEE FOR CR TO STENO
28.	STAMP DUTY
29.	CYCLE ALLOWANCE
30.	CITY COMPANSSIONATRY ALLOWANCE
31.	ECONOMY MEASURES
32.	RECRUITMENT SC & ST
33.	ELECTRICITY CONSFSSION
34.	TUTION FEES
35.	DEPARTMENTAL EXAM OA GR-II -SO
36.	FACTORY ACT
37.	CHARACTER ANTICEDENT
38.	MP CIVIL SERVICE REGULATION CONDUCT RULES
39.	GOVT MUTUAL BENEIT & GROUP SAVING
40.	USE OF VEHICLE FOR DEAD BODY
41.	GENERAL CIRCULARS
42.	DELIGATION OF POWER
43.	PENSION (funeral charge) Rs. 2500.00
44.	REVISION PAY & DN GAZETTED OFFICERS
45.	HOUSE BILLDING ADVANCE
46.	MOTOR CYCLE/CYCLE ADVANCE
47.	FESTIVAL ADVANCE
48.	GRAIN ADVANCE
49.	PAY - DA

50.	APPOINTMENT & DEPLOYMENT OF STAFF.
51.	T.A.
52.	DEPARTMENTAL ENQUIRY
53.	LIVERIES
54.	AWARDS
55.	PRODUCTION BONUS
56.	SETTLEMENT ALLOWANCE
57.	PENSION RELIEF
58.	MEMBER SHIP                    efcjf'ki
59.	FAMILY PLANNING                    Qeyh lykfuæ
60.	GRANT OF STAGNATION AUOWANCE
61.	OPTION OF EMPLOYEE OF TRADE- ESTT FOR GPF & PENSIONARY BENIFIT
62.	PERFORMANCE OF DT& TA
63.	CHANGE OF CADRE
64.	COUNSL FEES
65.	COMPLANTS CIRCULAR
66.	COURT CASE
67.	FORMATION COMMITTEE CR CLASSIII &IV
68.	WAGE REVISION CLASS III&IV 1989
69.	WAGE REVISION CLASS I& II 1989
70.	JOINING TIME
71.	SPECIAL PAY
72.	WASHING ALLOWANCE
73.	NIGHT SHIFT ALLOWANCE
74.	TERMS & CONDITION OF DEPUTATION OF BOARDS EMPLOYEE

	RFC SOCIETY
75.	CASH HANDLING ALLOWANCE
76.	PROTOCOL FOR FUNCTIONING OF THE IN HOUSE MANAGEMENT CONSULTANCY SERVICES
77.	TRANSEER GUIDE LINES
78.	TRANSFER AND PROMOTION
79.	GROUP PERSONAL ACCIDENT INSURANCE POLICY.
80.	PHYSICAL HANDICAPPED PERSON
81.	i d'kuj dY; k.k dksk fu; eA
82.	REFUND OF SECURITY DEPOSIT
83.	WAGE REVISION CLASS III & IV (WEF 1-4-94)
84.	DATE OF BIRTH
85.	WAGE REVISION CLASS I & II (WEF 1.4.94)
86.	JOURNEY APPROVAL
87.	ykcd I Hkk@fo/kkul Hkk fuokpur
88.	TIME BOUND PROMOTION SCHEME
89.	PROTECTION TO WOMAN EMPLOYEES ASSAINST SEXUAL HARASHMENT IN WORK PLACE.
90.	FORMATION FOR COMPANY M.P.P.KVV COMMITTEE LTD.
91.	vfuoK; Z I dk fuoRrA
92.	e-iz jkT; fo   r eMy Qjyks ; kst uk 2003
93.	SCHEME FOR ASSESING THE PHYCICAL FITERIESS FO THE LIENCE STOFF.
94.	FORMATION FOR COMMUNICATION UNIT.
95.	JOB CONTRACT OF QUILIFIED CONTRACTORS FOR OPERTION OF 33/11 KV S/ STATION.

96.	ehVj jhfMax dk dk; Z Bcds ij djkus l cakh ehVj okpd ; kst ukA
97.	WAGE RIVISION 1999
98.	vf/kdkfj; ka@depkfj; ka ds drD; ] mRrjnkf; Ro , oa vkpj .k fl ) karA
99.	291 SHOW CAUSE NOTICE SL. RAJESH SHRIVASTAVA.
100.	293 ofj"B y[kkf/kdkjh dk; kz ds depkfj; ka dks dkj .k crkvka l pukA
101.	294 S.C. NOTICE SHRI RAJESH SHRIVASTAV J.E.
102.	295 SHRI R.K. GUPTA J.E.
103.	296 S.C. NOTICE TO SHRI D.K. MISHRA J.E.
104.	297 S.C. NOTICE TO SHRI D.K. MISHRA J.E.
105.	303 foHkxh; tkp ofj"B y[kkf/kdkjh dk; kz jhok
106.	304 Jh , l -, l - fl g , l -vks ds fo: ) f'kdk; rA
107.	308 Jherh y{eh i kBd V\$ d\$ A
108.	311 Jh f'kokulln 'kekz tsbz
109.	312 Jh jkefugkj i k.Ms gYijA
110.	303 Sh. H.B.P. SHUKLA J.E.
111.	315 Sh.H.P.B. SHUKLA JE.
112.	318 Sh. R.K. NIGAM HELPER
113.	319 Sh. HARUN RASID OA GR I
114.	320 Sh. D.N. MUKHARJEE JE
115.	321 " B.K. PATEL J. E.
116.	Jh ot\$sk dekj feJk gYij bzbz jhok
117.	322 " D.K. SHRMA JE
118.	323 Sh. B.K. NAMDEV %dfu"V ; a-h 1/2 l kd k; Vh jhok
119.	324 Jh iHkr dekj ek\$ l gk; d ; a-h fuyfEcr
120.	325 Jh ; kx\$nz i rki fl g dk; kz l gk; d ; a-h fuyfEcr
121.	326 Jh r: .k dekj feJk dk; kz ; a-h

122.	Jh ,y-,u- fl g xM 1
123.	eks tehy [kku xM 3
124.	Jh iekn depkj feJk yk- ifjpkyd Jskh nks gYij
125.	Jh veryky nps ykbu fujh{k d fuy{icr
126.	Jh Mh-,u- epl t{z dfu"B ; a-h c{dq Bi g Mh@I h
127.	Jh ,I -ts 'kekz b{bz
128.	Jh Vh-ds feJk b{bz Vh-ch-i h, I -½
129.	Jh vkj-ds JhokLro tsbz
130.	Jh ch- ds JhokLro tsbz
131.	Jh ,I -ds fuxe tsbz
132.	Jh ch-ds ukenø tsbz
133.	Jh 0; kl eqju f}onh tsbz
134.	Jh Mh-ds 'kekz tsbz
135.	Jh I h-,y- frokj h I gk; d Jskh rhu I efj; k
136.	Jh Vh-Mh- iVsy I gk; d Jskh rhu c{dq Bi g
137.	Jh , -Mh- f}onh I gk; d Jskh rhu c{dq Bi g
138.	Jh ch-,e- f}onh dfu"B ; a-h forj.k d{bz pkjgVk
139.	Jh i h-,I - c?ky vks,- xM nks
140.	Jh i h-I h- fuxe Vh-, - xM nks
141.	vf/kdkfj; ka@depkfj; ka ds fo: ) tkp dk; bkg h jhok
142.	Jh jkt{s k JhokLro dfu"B ; a-h dkj.k crkvka
143.	Jh ,I -,u- 'k{pyk dk-I - Jskh rhu ds fo: ) vuqkkI ukRed dk; bkg h
144.	Jh ,I - vkj- ik.Ms I gk; d ; a-h ,I -Vh-I h- 'kgMky fu; icr dk; Zea yki jokgh ckora
145.	Jh vkj-i h- fl g vks,- xM nks jhok nf{k.k
146.	Jh jke i{ kn 'k{pyk dk; k{y; I gk; d Jskh rhu
147.	Jh j?k{pj n; ky mi k/; k; dk; k{y; I gk; d Jskh rhu

148.	Jh vkj-ch 'kek l ok fuoRr y[ kkf/kdkjh jhok
149.	Jh , l -Mh- prphh ofj"B y[ kkf/kdkjh jhok
150.	Jh , l -ds feJk dk-l - nks ofj"B y[ kkf/kdkjh jhok oržku v/kh{k.k ; æh fl foy dk; kŷ; jhok

*I keltl; d{ k ds Qkby dh I ph*

<b>S.No</b>	<b>SUBJECT</b>
1.	Transformer correspondence
2.	Power x mer correspondence
3.	S.T.R.U.
4.	Above 160 KVA/X mer
5.	General correspondence of damage
6.	General correspondence of damage
7.	General correspondence of theft
8.	General correspondence of accident.
9.	Welfare activities
10.	Sports activities.
11.	P.M. & load shedding
12.	Maintenance of line Rewa (s)
13.	Maintenance of Rewa (M)
14.	S/s correspondence.
15.	General correspondence.
16.	T.H.P. Hydral correspondence.
17.	Telephone
18.	R.T.A. of Rewa N/S/STM+ Temp. advance.
19.	Inprest Rewa H/s
20.	Single phasing A.C. swith.
21.	civil correspondence,
22.	M.O.V. Return.
23.	Vocicie correspondence.

24.	Liveriese correspondence.
25.	'C' catagory.
26.	Investegation cause of faiture of x-mer.
27.	Rewa society corespondence.
28.	Excessive fevlvre of x mas.
29.	Correspondence rugarding S/s.
30.	Fire Harzard & Accident.
31.	Nagar Nigam
32.	X mas Return to store.
33.	Regarding slagen Boards vehicle.
34.	Co-oprative Bank
35.	Correspondence from R.A.O.
36.	Correspondence Regarding C/T./P.T. unit & VCB
37.	Correspondence from E.E. STM.
38.	Property Register.
39.	Interruption of Rewa (M)
40.	Interruption of Rewa (S)
41.	Damageses by flood.
42.	Quarterly of Vchicle.
43.	Quarterly of damage of Boards proparty.
44.	Quarterly of Accident.
45.	Quarterly of Theft.
46.	Quarterly x-mer.
47.	Quarterly of X-mer.
48.	X-max failure weeking.
49.	Hiring of vehicle,

50.	Energy conservation.
51.	EHVS/S manageer.
52.	Load Regulatorey measures.
53.	Imprest Temp. Advace.
54.	Advestisement.
55.	Corespondence of Electrical inspector
56.	Safty appliance
57.	Furniture.
58.	Look sabha/vidhan Sabha/nagar Nigam
59.	Boards diary.
60.	Computer.
61.	Survey of Vcheckle.
62.	D.G. set.
63.	Preman soon maintanance.
64.	C.E.A. quartergy return.
65.	Ammendment of I.E.A. 1910
66.	Vchicle Return file.
67.	Stati caldata year by.
68.	Contingency plan.
69.	S.T. 2000
70.	Generalcorrespondence of House Building.
71.	G.P.A.I.P. statement with M/s oriental Insurence co. JBP.
72.	Use of VJCE-Mail.
73.	Information regarding by M/S.
74.	Annual crime Report.
75.	T.V. cabils.

76.	Revdving fund.
77.	ekfl d ifronu vijkk
78.	Interption of break down.
79.	Codifecation.
80.	Mator Intruption file.
81.	Installation of maning equapn.
82.	VW/s i ksy , oa > ps i ksy dh tkudkjh
83.	132 K.V.S/S KATRA
84.	M.P.E.R.D. Correspondence.
85.	33/11 KV I cLV/s ku Hkw vf/kxg.k
86.	X-mas installation file.
87.	Load survey data.
88.	E- Mail correspondence.
89.	Information regarding Reliabelity indux.
90.	System lass (33 KV)
91.	Correspondence with crimping house.
92.	Triping E.H.P. S/s
93.	xpLrk Qkby
94.	Dismantling of file line and pole.
95.	okf.kfT; d dj ¼ kal -½ I Bkkx jhok
96.	dk; ky; ka@mi dlnka ea rkmQkM vxxtuh , oa vf/kdkjh@depkfj; ka ds ekj i hV dh ?kVukvka dh tkudkjhA
97.	Monthly M.R.J. Print + metis fixing.
98.	Model X-mas
99.	H.B. mangament.
100.	Public under taking commett e.e. meating.

101.	Daily power position.
102.	Metising inllhv feeders.
103.	33/11Kv S/swise power availibily.
104.	u; s mi dlnka dh LFkki uk grq; kst uk r\$ kj djus ckora
105.	vki nk l sfui Vus dh i wkz r\$ kfj; ka
106.	l oš , oa y?kq l ve l lkkx jhok ds dk; kzy; grqfdjk; s ds Hkou ysus grq i =kpkjA
107.	tu l w/kz f'k{kk rFkk oPNMrk vfhk; kuq
108.	vk; q r jhok l lkkx jhok ds dk; kzy; eafo   r i nk; dh l klrkfgd l eh{kkA
109.	dlnh; fodkl i kf/kdj .k fnYyh dh vko'; d tkudkjha
110.	Competency survey under DPID Project.
111.	fo   r 0; oLFkk dh nšud l eh{kkA
112.	Jheku-ed; ea-h e-iz 'kkl u i kskteA
113.	Providing Informtion Required carring out cast of supply analysis.
114.	Action plan for managing untispted power supply during schedunal out on Rabi seasion.
115.	Information required by MPERC for preparation of performance
116.	Maintenance of Importent registor record
117.	forj .k VkuI Qkej eafu/kkzr {kerk ds q; wt b thebV ok; j dk mi ; kx
118.	l pk-l /kk- 'kgj l lkkxka ds varxh ekul u i wZ ykbuka ds j [kj [kko , oa l alkj .k dk; kš grq Jfedka dh LohdfrA
119.	esfudy ehVjka l sl af/kr i =kpkj QkbyA
120.	Setting up of task group by honble ERC for straugh thoring of sub transmission system with parguls fef to arest failare of x-mas.
121.	Intruption to water works supply fourfneghtly report information thereon.
122.	Action plan for reduction on x-mes faifire.
123.	Failure of energy audit metising sistem within guarantie period.

124.	Information required for distribution planning.
125.	Information required for distribution planning.
126.	Load for casting for the year 2004 -05
127.	Information required for distribution planning.
128.	Constitution of Review panel for M.P. electricity supply code 2004.
129.	Transfer of line & S/s
130.	33/11 kv S/s correspondence at dhera.
131.	Information required for distribution planning.
132.	Capacitor correspondence.
133.	Requirement of materials against theft and damage.
134.	Availabilities of vehicle.
135.	Information required for distribution planning.
136.	Information required for distribution planning.
137.	Rabi season load management correspondence.
138.	Information required for distribution planning.
139.	Monthly report of D/x-mes
140.	Information required for distribution planning.
141.	Information required for distribution planning.
142.	Observance of vigilance awards.
143.	Information required for distribution planning.
144.	Information required for distribution planning.
145.	Information required for distribution planning.
146.	Information required for distribution planning.
147.	Guarding of power line.



9- vf/kdkfj; ka , oa depkfj; ka dk uke] i nuke] oru MkV&l ph l yXu gA u/s 4.19b) (ix)

Ø	uke	in	irk
1	Jh vks , l ifjgkj	v/kh{k.k ; æ-h	dk; kZ v/kh{k.k ; æ-h ¼ pk@l dkk½xYyk eMh jhok
2	Jherh v#.kk JhokLro	dk; i kyu ; æ-h ¼/hohi h, l ½	&&&rnb&&&
3	Jh Mh ih fl g	dk; i kyu ; æ-h ¼/hohi h, l ½	&&&rnb&&&
4	Jh , u ih fl g	l gk; d ; æ-h	&&&rnb&&&
5	Jh , dsHKYyk	dk-l -, d	&&&rnb&&&
6	Jh vkj dsncs	dk-l -, d	&&&rnb&&&
7	Jh , l ih f=i kBh	dk-l -nks	&&&rnb&&&
8	Jh vkj th JhokLro	dk-l -nks	&&&rnb&&&
9	Jh ts ih feJk	dk-l -nks	&&&rnb&&&
10	Jh vkj , l 'kpyk	dk-l -nks	&&&rnb&&&
11	Jh 0gh ds [kjs	dk-l -nks	&&&rnb&&&
12	Jh vkj ds 'kpyk	dk-l -nks	&&&rnb&&&
13	Jh , e , e prphh	dk-l -nks	&&&rnb&&&
14	Jh vkj ds vyx	dk-l -rhu	&&&rnb&&&
15	Jh th ih ik.Ms	dk-l -rhu	&&&rnb&&&
16	Jh , , y iVsy	dk-l -rhu	&&&rnb&&&
17	Jh nosk irki fl g	dk-l -rhu	&&&rnb&&&
18	Jh vkj ; wf=i kBh	dk-l -rhu	&&&rnb&&&
19	Jh nonz fl g	dk-l -rhu	&&&rnb&&&
20	Jh vkj Vh 'kekZ	dk-l -rhu	&&&rnb&&&
21	Jh , l , l f}onh	dk-l -rhu	&&&rnb&&&
22	Jh foukn depkj oekZ	dk-l -rhu	&&&rnb&&&
23	Jh ih , u ukens	dk-l -rhu	&&&rnb&&&
24	Jh oh ih f}onh	dk-l -rhu	&&&rnb&&&
25	Jh , l , u 'kekZ	dk-l -rhu	&&&rnb&&&
26	Jh , y ds feJk	ekufp=dkj	&&&rnb&&&
27	Jh ; wdsHKVVkpk; Z	l - ekufp=dkj	&&&rnb&&&
28	Jh ts ih feJk	'kh?kz ysq kd	&&&rnb&&&
29	Jh , l ih f=i kBh	'kh?kz ysq kd	&&&rnb&&&
30	Jh l k[ khyky	n¶rjh	&&&rnb&&&
31	Jh jkecnu	HkR;	&&&rnb&&&
32	Jh l hrk'kj .k l su	HkR;	&&&rnb&&&
33	Jherh jktjkuh xkfe	HkR;	&&&rnb&&&
34	Jh vfgoj .k fl g	HkR;	&&&rnb&&&
35	Jh xak i l kn l su	HkR;	&&&rnb&&&
36	Jh jkekorkj iVsy	HkR;	&&&rnb&&&

37	Jherh fo   knoh	Qj kł	&&&rnđ&&&
38	Jherh xeyk ckbł	Qj kł	&&&rnđ&&&
39	Jh cf) eku fl g	Mkboj	&&&rnđ&&&
40	Jh l e; yky fo'odekł	l g {kk l fud	&&&rnđ&&&

10- vf/kdkfj ; ka , oa deþkfj ; ka ds uke] oru , oa {kfri frz u/s 4.19b) (x)

Ø	uke	mi yfC/k	{kfri frz
1	Jh vks , l ifjgkj	32818	fujd
2	Jherh v#.kk JhokLro	28857	
3	Jh Mh ih fl g	29689	
4	Jh , u ih fl g	24905	
5	Jh , dsHkYyk	18850	
6	Jh vkj ds nçs	16955	
7	Jh , l ih f=i kBh	16325	
8	Jh vkj th JhokLro	17857	
9	Jh ts ih feJk	15221	
10	Jh vkj , l 'kðyk	16325	
11	Jh Ogh ds [kjs	15141	
12	Jh vkj ds 'kðyk	16325	
13	Jh , e , e prðhh	16245	
14	Jh vkj ds vyx	13247	
15	Jh th ih ik.Ms	13800	
16	Jh , , y iVsy	13800	
17	Jh nðsk irki fl g	13327	
18	Jh vkj ; wf=i kBh	12300	
19	Jh nðnz fl g	13800	
20	Jh vkj Vh 'kekł	13247	
21	Jh , l , l f}onh	11905	
22	Jh foukn døkj oekł	10065	
23	Jh ih , u ukenð	12773	
24	Jh oh ih f}onh	12300	
25	Jh , l , u 'kekł	10352	
26	Jh , y dsfeJk	16325	
27	Jh ; wdsHkV/kpk; l	15693	
28	Jh ts ih feJk	13205	
29	Jh , l ih f=i kBh	13800	
30	Jh l kł khyky	9640	
31	Jh jkecnu	8693	
32	Jh l hrk'kj .k l su	9640	
33	Jherh jktjkuh xkše	6105	
34	Jh vfgoj .k fl g	7637	
35	Jh xak ił kn l su	9720	

36	Jh jkekorkj i Vsy	9720	
37	Jherh fo   knsh	8693	
38	Jherh xeyk ckbz	5958	
39	Jh cf) eku fl g	13684	
40	Jh l e; yky fo'odekz	8708	

11- dk; kzy; dsfy, o"kkZud kj enokj ctV vkoA/u rFkk mi ; kx l cdkh tkudkj

Ø	ctV gM	dk; l dk uke	o"lz	, ykds'ku	[kpZ 1/1 rEj 05 rd½
1	LFkki uk [kpZ vf/kdkfj ; ka@depkfj ; ka ds oru] HkRrs , oa vU; , ykmUl	i z kkl fud [kpZ	2005&06	13200000	4134536
2	vU; dk; kzy; hu [kpZ	LVs kujh Qk/ks dki h] dEl; Wj] foKki u , oa vU; [kpZ	2005&06	2600000	4000000
3	l keku l s l cfi/kr [kpZ	l keku dh [kjnhh okgu fdjk; k [kpZ vU; [kpZ	2005&06	438000	2100000

12- dk; De , oa fgrxktgh dh tkudkj U/s 4.1(b) (xii)

Ø	dk; De dk uke	i z kkl fud foHkx	o"lz	jkf'k Lohdr 1/2yk[k e½	fgrxktfg; ka dh l d; k
1	ih, ethokbz ; kst uk	eqv-, l Vhl h tcyig	2001&02	366-00	yxHkx 520
2	ih, ethokbz ; kst uk	eqv-, l Vhl h tcyig	2002&03	198-00	yxHkx 140
3	ih, ethokbz ; kst uk	eqv-, l Vhl h tcyig	2003&04	282-00	yxHkx 66
4	ih, ethokbz ; kst uk	eqv-, l Vhl h tcyig	2004&05	60-00	yxHkx 31
5	, e, uih ; kst uk	eqv-, l Vhl h tcyig	2001&02	12-00	yxHkx 4
6	, e, uih ; kst uk	eqv-, l Vhl h tcyig	2002&03	54-00	yxHkx 21
7	, e, uih ; kst uk	eqv-, l Vhl h tcyig	2003&04	48-00	yxHkx 20
8	, e, uih ; kst uk	eqv-, l Vhl h tcyig	2004&05	90-00	yxHkx 15
9	, d cRrh duD'ku	l h, eMh ei i ksofoda fy- tcyig	2004&05	VuZ dh csl l vrxRk	yxHkx 483

13- okLrfod fgrxkfg; ka dks i klr gkus okyh I fo/kk U/s 4.1(b) (xiii)

Ø	NW dh iðfr	uke	irk	o"z	I gk; rk dh iðfr	vupfur NW/½y[k ek ekf l d
1	VsjQ I fcl Mh	Yh , dy cRrh	jhok oRr	2005&06	VsjQ ea NW ds vk/kkj ij	33-90
2	VsjQ I fcl Mh	Yh iä	jhok oRr	2005&06	VsjQ ea NW ds vk/kkj ij	4-77
3	VsjQ I fcl Mh	50 ; fuV Is de [kir okys ?kj syw mi HkkDrk	jhok oRr	2005&06	VsjQ ea NW ds vk/kkj ij	11-93
4	VsjQ I fcl Mh	ty ink;	jhok oRr	2005&06	VsjQ ea NW ds vk/kkj ij	1-40
5	VsjQ I fcl Mh	ehVMZ df"k iä mi HkkDrk	jhok oRr	2005&06	VsjQ ea NW ds vk/kkj ij	1-76
6	VsjQ I fcl Mh	¶yV jV df"k iä mi HkkDrk	jhok oRr	2005&06	VsjQ ea NW ds vk/kkj ij	100-28

14- dk; kzy; ea mi yC/k tkudkfj; ka dh I ph Jskh rFkk ml dh iðfr ½gkMZ dki h] byDVkfud QkeZ

Øekad	Jskh	gkMZ dki h	byDVkfud QkeZ
1 LFkki uk] Qkby]jftLVj Ø; ] fcy] yhxxy I sy] jktLo d{k I kekl; d{k I sl æf/kr Qkbya		gkMZ dki h	&&&&

15- vke ukxfjdka dks I puk mi yC/k djkus grq mi yC/k I fo/kk, a tS si t rdky; ] ifcyd dkm.Vj vkfn u/s 4.1(b)(xi) dk; kzy; v/kh{k.k ; æh ¼ pk@I dkk½ jhok oRr ea , d h dkbZ 0; oLFkk ugha gA

16- ykd I puk vf/kdkjh I sl æf/kr tkudkj h u/s 4.1(b)(xvi) v/kh{k.k ; æh dk; kzy; ¼ pk@I dkk½ jhok oRr ea fuEukuq kj ukMy vf/kdkjh fu; Ør g&&

ukMy vkQh j	
1- uke , oa in	Jh Mh-i-h- fl g dk; ½kyu ; æh ¼/hohi h, I ½
2- niHkk"k Øekad	256926
3- dk; Z dk LFkku , oa i rk	dk; kzy; v/kh{k.k ; æh ¼ pk@I dkk½ jhok oRr e-izi w{ksfo-fo-dafy- jhok

