

v/; k; 1

iLrkouk

1-1	di; k gLri qLrdk dh i "Bhkie ij izk" k Mkys iL puk dk vf/kdkj vf/kfu; e 2005½	bl gLri qLrdk eaftyk ifyl cy dh iL puk] xBu] vf/kdkj] drD; , oa dk; iL zkkyh ds l Ecak ea tkudkj h l d fyr dh xbz gA
1-2	gLri qLrdk dk m} s" ; &	bl gLri qLrdk dk m} s" ; ftyk ifyl cy dh dk; iL zkkyh] drD;] vf/kdkj , oa turk dks ftyk ifyl cy ds l Ecak ea okfNr tkudkj h , d gh LFkku ij miyc/k djuk gSA
1-3	gLri qLrdk fdu 0; fDr; ka@ l iL Fkkuka @ l xBuks bR; kfn dsfy; smi ; ksch g&	; g gLri qLrdk vke turk vFkok fdl h Hkh l iL Fkkuks @ l xBuks dsfy; smi ; ksch gSA
1-4	gLri qLrdk dk i k: i	bl gLri qLrdk dk i k: i foj .kkRed , oa l iL ; kRed Lo: i dk gSA
1-5	iL f j Hkk' kk, a½ di ; k gLri qLrdk ea iz; ksch dh xbz "kCn dks iL f j Hkkf' kr dj iL	
1-6	gLri qLrdk ea l ek; k ftr fo' k; ka ds l Ecak ea folr tkudkj h rFk vl; tkudkj ; ka dsfy; s l i dz 0; fDrA	bl gLri qLrdk ea l ekfgr fo' k; ka ds l Ecak ea folr tkudkj h ifyl v/kh{kd dk; k y; ds l puk vf/kdkj h Jh vkj Od t s vfrjDr ifyl v/kh{kd jhok , oa l gk; d l puk vf/kdkj h Jh ohj fl g c?ky mi ifyl v/kh{kd ed; ky; jhok l s iLr dh tk l drh gA
1-7	gLri qLrdk ea miyc/k tkudkj h ds vfrjDr l puk iLr djus dh fof/k , oa "kYd	

v/; k; & 2 ½ eṣṣy&1½
I xBu dh fof''kf'V; k; dR; , oa drD;

2-1	ykd ikf/kdj.k dsmnās;	fityk ifyl cy dk m}'; ftyes dkuuu 0; oLFkk dh LFkki uk]dkuuks dk ikyu djokuk] vijj/kka dh jkdFkke , oa irk j l h]vijj/kks dh foopuk]U; kf; d vknf'' kdkvka dk ikyu] vfr egRoiwkZ 0; fDr; ka dh l j {kk } ; krk; kr l aakh 0; oLFkk vkfn gSA
2-2	ykd ikf/kdj.k dk fe'ku@fotu	nś khkDr , oa tul ok
2-3	ykd ikf/kdj.k dk l fklr bfrgkl vjg bl ds xBu dk i d x	ifyl vf/kfu; e 1861]fnukad 22 epz 1861 dks ikfjr fd;k x; k A ftl ds vlrxr ifyl cy dk xBu gprk gS A Lorark ds i'' pkr ftyk ifyl cy dk xBu jkT; ''kkl u }kjk fd;k x; k o 01 uoaj 1956 dks e/; ins' k dh LFkki uk ds l kfk gh ftyk ifyl cy jhok dk xBuk jkT; ''kkl u }kjk fd;k x; k A ftyk ifyl cy jhok ea Jh xkfonfl g Hkoi q l i Eke ifyl v/kh{k d fu; q r fd;s x; s A orzku ea Jh on idk'' k ''kekZ] ftyes ds 34oa ifyl v/kh{k d gA
2-4	ykd ikf/kdj.k ds drD;	fityk ifyl cy jhok ds drD; fuEkuq kj gS% 1- ftyes ea dkuuu 0; oLFkk dh LFkki uk djuk rFkk ''kkfr 0; oLFkk cuk; sj [kuk A 2- vijj/kks dh jkdFkke djuk A 3- vijj/k ?kVr gkus ij vijjf/k; ka dk irk yxkdj fxjQrkj djuk rFkk mlgs U; k; graq U; k; ky; es iLr q djuk A 4- vijjf/k; ka ds fo:) ifrcakRed dk; bkgh djuk A 5- ftyes ds Hke.k es vkus okys egRoiwkZ , oa vfr egRoiwk 0; fDr; ka dh l j {kk djuk A 6- ekuuh; U; k; ky; ks }kjk tkjh vknf'' kdkvks dk ikyu djuk A 7- ftyes ea ''kkfr 0; oLFkk , oa l keinkf; d l nHko cuk; sj [kus graq l epr dk; bkgh djuk A 8- ; krk; kr 0; oLFkk cuk; s j [kus graq vko'' ; d dk; bkgh djuk A 9- nL; q l eL; k l s fui Vus graq vko'' ; d dk; okgh djuk A 10- turk , oa ofj' B dk; ky; ka l s i klr gkus okyh f'' kdk; rka dh tkp , oamfpr fujkdj.k djuk
2-5	ykd ikf/kdj.k ds eq; NR;	1- vijj/kks ij fu; æ.k , oa foopuk 2- dkuuu 0; oLFkk cuk; sj [kuk 3- egRoiwkZ 0; fDr; ka dh l j {kk 4- U; k; ky; ka }kjk tkjh vknf'' kdkvks dk ikyu 5- ; krk; kr 0; oLFkk cuk; sj [kukA

ykd ikf/kdj.k }kjk inRr l okvka dh
 l ph ,oamudk l f{klr foaj.k

&fytik ifyl cy }kjk fuEufyf[kr l ok; a inku dh
 tkrh gS%

1-Fkkuk Lrj &%

1-Fkkuk Lrj ij vijk/kks dh jkdFkke] irkjl h]
 foopuk] tu f" kdk; rka dh tkp] Oghvkbzi h l j {kk
 rFkk dkumu OP; oLFkk cuk; s j [kuk] l kEinkf; d
 l nHkko vkfn l eLr l ok; s Fkkuk Lrj ij inLFk
 vf/kdkfj; ka , oa de'pkfj; ka fu%' kq'd inku dh tkrh
 gSA

2-vufokkx Lrj ij l ok; a &%

fytik ifyl cy jhok ea fuEufyf[kr 07

vufokkx l okjr gSA

1-ifyl vufokkx emxat

2-ifyl vufokkx MHHGk

3-ifyl vufokkx R; k'kfj

4-ifyl vufokkx fl jels

5-uxj ifyl v/kh{kd jhok

6-mi ifyl v/kh{kd jhok

7-mi ifyl v/kh{kd(vtkd)

vufokkx Lrj ij inLFk ifyl ds jktif=
 vf/kdkfj; ka }kjk eq; : i l s ifyl ds fo:) ikr
 gksus okyh f" kdk; rka dh tkp] l ksh xbz fokkxh;
 tkp] tu f" kdk; rka dk fujkdj.k] vufokkx
 tkfr @ tutkfr vR; kpkj fuokj.k ds v'rxr
 i atic) vijk/kks dh foopuk] uo fuokfgrk mRi hMtu
 l e'kh vijk/kka dh foopuk] x'khj vijk/kks dk
 i; b'k.k] Fkkuk ds dk; k' dk i; b'k.k] Fkkuks dk
 fujh{k.k] vufokkx ea inLFk vf/kdkfj; ka , oa
 de'pkfj; ka dk cyQs j] vkj{kd , oa i'zku vkj{kdks
 dks vkdfLed vodk'k Lohdr djuk bR; kfn dk; l
 l ikfnr fd; k tkrk gSA

3-ftyk Lrj ij l ok; a &%

fytik eq; ky; Lrj ij ifyl v/kh{kd , oa
 vfrfjdr ifyl v/kh{kd inLFk gSA ifyl v/kh{kd
 ftyk ifyl cy dk eq[k; k gkrk gSA vr, o bl
 ukrs vius ifyl cy dk usRo ekxh" k'u , o
 vufokkx kkl u cuk; s j [kuk eq; nkf; Ro gSA vfrfjDr
 ifyl v/kh{kd] ifyl v/kh{kd ds inh; drD; ka ds
 fuo'gu ea l g; ksx inku djrs gSrFkk ftyk ifyl
 dk; k'z; , oa jf{kr d'bnz ds i Fke i; b'k.k vf/kdkjh
 gkrk gSA ifyl v/kh{kd }kjk fuEufyf[kr l ok; s
 inku dh tkrh gSA

- 1- ftys ea dkumu 0; oLFkk dh LFkki uka
- 2- vijk/kks ij fu; a.k
- 3- ftys ds vf/kuLFk vf/kdkfj; ka ds dk; k' dk
 i; b'k.k , oa vko" ; d ekxh" k'uA

- 4- ifyl dsfo: } iklr gk f" kdk; rks, oa tu f" kdk; rka dk fujkdj.k A
- 5- U; kf; d vknf" kdkvka dk ikyu djokukA
- 6- nL; qI eL; k l sfui Vusgrq vko" ; d dk; Z kstuk cukuk rFkk nL; qI eL; k dk fujkdj.k djukA
- 7- xllkhj vij/kks dk i; bsk.k
- 8- Fkkuks dk fujh{k.k
- 9- ofj 'B dk; kZy; ka }kjk iklr vknf" kks, oa funz' kks dk ikyu A
- 10- vfr egROI wZ 0; fDr; ka dh l g {kk l fuf" pr djuk
- 11- ftyseal KEinlf; d l nHkko cuk; sj [kuk
- 12- vuqtkfr@tutkfr vR; kpkj fuokj.k, oa efgyk mRi hMau ds vij/kks dk l e; kof/k ea fujkdj.k djokuk, oa bu oxkZ ds Aj gkaus okys vR; kpkj ds l Ecak ea vko" ; d dk; bkgH
- 13- ftyseaxke j {kk l fefr; ka dk xBu, oa mudk l pkyu
- 14- vf/kuLFk ifyl cy dk usRo, oa ekxh" kZ, oa osyQs j l fuf" pr djukA
- 15- ftyk ifyl cy dk vuq' kkl u, oa eukcy dks Apk cuk, j [kukA
- 16- vU; foHkxks dks l g; kx inku djukA

5- **ifyl ykbu &**

ftyl e[; ky; ea, d vkj {kh dlnz gS ftl dk iHkjh jf{kr fujh{kdk gkrk gA jf{kr fujh{kdk ifyl ykbu ea inLFk l Hkh depkfj; ka dks fM; kh forj.k djrs gSrFkk mudk fujh{k.k djrk gA jf{kr fujh{kdk ifyl ykbu ea fu; fer : i l s ifyl ny dk iJM djokrk gS, oa muds vuq' kkl u, oa VuZ vkmV ds fy; s fteenkj gkrk gA ftyse ea vko" ; drkuq kj cy Hkstrk gS rFkk cin; ks ds vuq'k.k ds fy; s vuq'kd Hkstrk gSA og ifyl ds LVk; ea diM+] l kt & l Ttk vl= xksy&ck: n] rEcw, oa HkMkj dh vHk {kk ds fy; s fteenkj gS rFkk j [ks x; s jftLVjks dks l gh gkaus ds fy; s fteenkj gA og e[; ky; ds ijs cy dh iJM, oa e[; ky; l s l Ecak/kr l Hkh fo'k; ka dh ijh, oa l gh tkudkjh vk; ml ds vuq' kkl u] drD; vk; l kt l Ttk dh ijh, oa l gha tkudkjh ds l Ecak ea ifyl v/kh{kdk dks voxr djkus ds fy; s fteenkj gA og if{kd fdV fujh{k.k djrk gS rFkk okf'kZd pkanekjh djokrk gA ifyl ykbu l s foHkUu LFkkus ij yxs l Hkh j {kdkS

		<p>vkš l r fj; ka dk fujh{k.k djsxk o dkskky; }e&thu vkš</p> <p>gokykr j{kdkd dh ges" kk fujh{k.k djsxk A og ifyl v/kh{k d dk; kšy; dk i Hkkjh Hkh jgsk rFkk dk; kšy; ds depkfj; ks ij i; bšk.k djsxk A jf{kr fujh{k d ds drD; ka dk foaj.k ifyl jk; w ds išk 508 l s 514 ea mYys [kr fd; k x; k gA</p> <p>5- ftyk ifyl dk; kšy; %&</p> <p>ftyk ifyl dk; kšy; ftyk ifyl cy dk iz" kkl fud eq; ky; gA bl dk; kšy; ea ftys ea inLFk lElr ifyl depkfj; ka dk oru] LFkkukUrj.k] ; k=k&HkRrk] eMdy] vodk" k l Ecałh dk; Z l Eikfnr fd; s tkrk gA bl ds l kFk gh vl; vkdfLed 0; ;] Mhty] išk/ky] fctyh] VsyhOkau] xkfM; ka ds iKVZ ds l Hkh iđkj ds r; dks bR; kfn dk; Z fd; k tkrk gA ftyk ifyl cy ds vk/khu lElr ifyl l s l Ecał/kr Hkouks dk j[k&j] kko]fuełk l Ecałh dk; Z Hkh l Eikfnr fd; k tkrk gA ifyl depkfj; ka ds fo: } vuř kkl ukRed , oa n.MkRed dk; bkgH , oa muds dY; k.k l Ecałh dk; Z Hkh fd; k tkrk gA ofj' B dk; kšy; ks]tu ifrfuf/k; ka] foHkUu vk; ksks , oa turk l s l h/ks iklr f" kdk; rka dh tkp djokuk] ifronu fhktokuk]vko" ; d dk; bkgH l Ecałh dk; Z fd; k tkrk gA ftyk ifyl cy l s l Ecał/kr lElr i=kpkj ftyk ifyl dk; kšy; ds ek; e l s l Eikfnr gkrk gA vij/kka dk i; bšk.k l Ecałh i=kpkj] foHkUu cBdks ea ikfjr fu.k; kš dk ikyu] U; k; ky; , oa ofj' B dk; kšy; ka l s iklr vks" kks , oa funž" kks dk ikyu l Ecałh i=kpkj bl h dk; kšy; l s gkrk gA foHkUu foHkxks l s l ello; , oa mudks l g; ksx bl dk; kšy; }kjk ink; fd; k tkrk gA bl dk; kšy; ea Mh-l h-ch- Mh-l h-vkj-ch] , Q-, y-, y- fQaj fiM] cky vij/k , oa ftyk fo" ks k "kk [kk vkfn "kk [kk, a Hkh dk; j r gA</p>
2-7	<p>ykđ i kf/kdj.k ds foHkUu Lrjka ¼ kkl u] funškky;] {ks=} ftyk] Cykd vkfn½ ij l aBukRed <kpk</p>	<p>ftyk ifyl cy jhok ds fuEu Lrj gS ftudk l aBukRed <kpk ifj" k'V **v** ij l ayXu gA</p>

2-8	ykd ikf/kdj.k dh dk; h{krk c<kus grq tu lg; kx dh vi\$kk, a	ifyl cy turk ds chp] turk ds fy; } turk ds lg; ks l s dk; Z djrk gA vr, o cxj tu lg; kx ds ifyl dk dk; Z l hko ugh gA ifyl v/kh{kd dk; kzy; l s ydj Fkkuk Lrj rd fofHkuu Lrjs ij tu lg; kx iklr djus ds fy; s ifyl dh vki\$kk, jgrh gA e/; ins" k "kkl u }kjk fufeh dkuuu] eiz xte uxj j{kk l febr vf/kfu; e 2000 ds vlrxr xte@uxj j{kk l febr; ka xfbR dh xbz gA bu l febr; ka }kjk ifyl dks HkjiwkZ tu lg; kx iklr gkrk gA fdl h Hkh ifyl ds fy; s l Qyrk dh iFke lrZ tu lg; kx gh gA ftyk jhok ea bl {ks= ea vkl krhr l Qyrk iklr gA xte j{kk l febr; ka ds ek/; e l s nL; q mlenyu ds {ks= ea vk" kkrhr l Qyrk iklr gA ftyk jhok ea orEku ea dty 2080 xte j{kk l febr; ka , oa 189 uxj j{kk l febr; ka i Hkkoh : i l s dk; Z dj jgh gA
2-9	tu lg; kx l fuf'pr djus ds fy, fof/k@0; oLFkk	tu lg; kx iklr djus ds fy; s xte j{kk l febr; ka dk xBu fd; k x; k gS A bl ds l kfk gh ifjokj ijke" kZ dlnz ds ek/; e l s Hkh ?kjsyw l eL; kvka dk fujkdj.k fd; k tk jgk gA
2-10	tu l okvka ds vuqlo.k , oa f'kdk; rka ds fujkdj.k dh 0; oLFkk	tu l okvka ds vuqlo.k , oa f" kdk; rka ds fujkdj.k grqFkkuk] vuHkkx , oa ftyk Lrj ij 0; oLFkk dh xbz gA ftyk Lrj ij bu dk; kZ dh l klrfgd l eh{kk dh tkrh gA vuHkkx Lrj ij , d l l rkg ea 03 Fkkuka dk vkdfLed fujh{k.k] mu Fkkuks l s l Ecalkh f" kdk; rks dk fujkdj.k , oa i ; b\$kk.k grqjktif=r vf/kdkfj; ka dks funE" kr fd; k x; k gA bl h idkj Fkkuk Lrj ij Hkh Fkkuk i Hkkjh }kjk ifrfnu bu l okvka dh ekus/fjx dh tkrh gA
2-11	ed; dk; kzy; rFkk fofHkuu Lrjka ij dk; kzy; ka ds irs %Ni; k irka dk tuinokj oxhZdj.k djz	ifyl v/kh{kd dk; kzy; jhok ftyk&jhok %e-iz½ nijHkk'k dkd & 07662&258800 %dk; kZ½ 258801 %fuokl ½
2-12	dk; kzy; ds [kyus dk l e; % dk; kzy; ds cln gkus dk l e; %	i kr%10-30 cts l k; a%5-30 cts

v/; k; & 3/4 e u y & 2/2

vf/kdkfj; ka vkj deþkfj; ka dh "kfdR; ka , oa drD;

3-1 di; k fuEu ik: i ij vf/kdkfj; ka , oa deþkfj; ka dh "kfdR; ka , oa drD; dk
fooj.k mi yC/k dj; A

in dk uke		ifyl v/kh{kd
"kfdR; ka	i' kkl dh;	1- vf/kulFk vf/kdkfj; ka@deþkfj; ka dk i' kkl fud fu; æ.kA 2- LFKkukUj.k] i f" k{k.k , oa i nkLFkki uk 3- vkj-] i zvkj-] l mfu-]m-fu- , oa fujh{k d dsfo: } vuq' kkl ukRed foHkxh; dk; ðkgh djus dh "kfdR; ka ifyl jk; w ds i jk 214 l s 217 , oa 221 ds vuq kj 4- vkj {k dks dh HkrhZ , oa i f" k{k.k 5- deþkfj; ka ds dY; k.kdkjh xfrfof/k; ka] 6- vodk" k Lohdfr , oa vuq fLFkfr idj .kks dk fujk & dj .k bR; kfnA 7- deþkfj; ka ds oru of } LohdfrA 8- ftyk ifyl cy ds forrh; fu; æ.k vf/kdkjh dh "kfdR; ka 9- bZuke ¼ kkl; dk; Z ds fy; s 40@& , oa vijf/kd idj .kka ea 5000-00] Qjk vijf/k; ka ds fy; s mn?kks k.k] eq kfcjka dk bZuke ½
	forrh;	1- ftyk ifyl cy l s l Ecñ/kr vf/k-@deZ ds oru HkrR; efMdy jys[ku l kexh] fctyh]VsyhQks , oa vl; l Hkh idkj ds ns dks dh Lohdfr l Ecñk forrh; "kfdR; ka 2- Vk; j] V; w , oa cVh cnyus ds i wkZ vf/kdkj 3- fu/kkZjr ek; yst ds vuq kj okguks dks d.Me djkus dk vf/kdkj 4- "kkl dh; okguks dks fdjk; s ij nus dk vf/kdkj
	vl;	1- vñre ifronu /kkj 173 tk-Qks ds vlrxr nus dk vf/kdkj 2- vihyh; vñker 3- cñ; ka ds vkpj .k ij fjgkbZ 4- ikl i kV? pfj= l R; ki u , oa vKEl Zy; l d dh vuq' ka k 5- vkondks dks udy l " kYd nus dk vf/kdkj
drD;		1- ftys ea dkun 0; oLFk dh LFKki uk djuk rFk "kñr 0; oLFk cuk; sj [kuk A 2- [ky dñ xfrfof/k; ka l pkfyr djuk 3- vijf/kks dh jkdFkke djuk A 4- vijf/k ?kVr gksus ij vijf/k; ka dk irk

		<p>yxkdj fxjQfKj djuk rFkk mlgs U; k; grq U; k; ky; esiLrqr djuk A</p> <p>5- vijkf/k; ka ds fo:) ifrcdkRed dk; bkgH djuk A</p> <p>6- ftys ds Hke.k es vkus okys egRoiwkZ , oa vfr egRoiwk 0; fDr; ka dh I j {kk djuk A</p> <p>7- ekuuh; U; k; ky; ks }kjk tkjh vknS" kdkvks dk ikyu djuk A</p> <p>8- ftys ea "kkir0; oLFkk , oa l KEinkf; d l nHkko cuk; sj [kus grq l efr dk; bkgH djuk A</p> <p>9- ; krk; kr 0; oLFkk cuk; sj [kus grq vko" ; d dk; bkgH djuk A</p> <p>10- nL; q eL; k l s fuiVus grqko" ; d dk; bkgH</p> <p>11- turk , oa ofj 'B dk; ky; ka l s ikr gkus okyh f" kdk; rka dh tkp , oa mfr fujkdj.k djuk</p> <p>12- ftyk ifyl cy dk iz" kkl fud fu; a.k j l pkyu , oa exh" kZ</p>
<p>i n dk uke ifyl jktif=r vf/kdkjh</p>	<p>drD;</p>	<p>iR; d ifyl vf/kdkjh dk ; g drD; gksk fd og fdl h l {ke ikf/kdkjh }kjk ml s fof/k iwkr-% tkjh fd; s x; s l c vknS kka vks; okjUVks dk l Roj ikyu vks; fu"i knu djykd 'kkir dks i Hkfor djus okyh xrokrkZ dk l ag.k vks; l d puk dja vij/kka vks; ykd U; w bl ds fd; s tkus ds fuokj.k dja A vijkf/k; ka dk irk pyk; s vks; U; k; ky; ds l e{k yk; s x; s mu l c 0; fDr; ka dks i dMa-ftlgs i dMds ds fy; s og dkr% i kf/kdr gs vks; ftlgs i dMds ds fy; s i; kr vk/kj fo leku gs vks; iR; d ifyl vf/kdkjh ds fy; s bl /kkjk es of. kr iz kstuka es l s fdl h ds fy; s fdl h efnjky; j t p k?kj ; k HkZV ; k mPN[ky 0; fDr; ka ds l ekxe ds vl; LFkku es fcuk okj/ i osk djuk vks; ml dk fujh{k.k djuk fof/kiwkZ gksk A</p> <p><u>fVli . kh&</u></p> <p>bl /kkjk ds iko/kku ds vuq kj ifyl v/kh{k d dks vij/kh ds fo:) okj/ tkjh djus dk vf/kdkj gSA ifyl v/kh{k d ftl ea ftyk ifyl v/kh{k d dh 'kfDr; kW fufgr gs ifcyd xicfyx , DV dh /kkjk 5 ds vlrxr okj/ tkjh dj l drk gA naM i fdz k dh /kkjk 151 ds vlrxr tks iko/kku fn; s x; s gs ml dh ifj l hek ds vlrxr gh bl vf/kfu; e dh /kkjk 23 ds iko/kku vkrs gSA</p>
<p>i nuke Fkkuk i Hkjh , oa l mfu-</p>	<p>drD;</p>	<p>1/2 ifyl vf/kfu; e 1861 dh /kkjk 1 ds vlrxr l gk; d mi fujh{k d vks; mi ifyl v/kh{k d dks ifjoh{k/khu dks NkMoj vf/kfu; e dh /kkjk 7 ds</p>

		<p>vUr&r v/kh{kd drD; fu"i knu djus dh 'kfDr nh xbz gS tglWrd dh ml dk l ædk i fyl vf/kdkfj; ka ds fuyæu vksj vf/kfu; e dh /kkjk 7¼½ es of. kã nM fn; s tkus l s A</p>
<p>i n uke dñnz fyfi d ¼Fkkuk eaf</p>		<p>v og Mkd dks i ktr djsck vksj [kksysck vksj i Hkkjh vf/kdkjh vkj {kh dñnz ds fy; s l Hkh Mkd dks ml dks nrk gS A og i = 0; ogkj jftLVj j [krk gS v/kh{kd dk; kzy; }kjk exk; s x; s l Hkh ifronu , oa fooj.kh fy [krk gS vksj l Hkh yãcr dkxtrk 'kh?ark l s fui Vk; s tkrS gS bl ds fy; s ftEenkj gS A i R; æ ekg ds vUr ea dñnz Mk; jh es og vuRfjr l UnHkã dh l pph dh i d'V djrk gA c-i R; æ l ppg vkj {kh dñnz ds i Hkkjh vf/kdkjh dh tkudkjh ea ¼ ; fn dñnz ea i Hkkjh vf/kdkjh mi fLFr gks l Hkh vLFkk; h LFfkr vknS kka vksj fu"i knu rFkk mRrj ds fy; s i fr {kkj r yãcr dkxtrks dks yk; sk A l ppg dh ijM ij ; k ml ds ckn og ml fnu ds fy; s drD; ds forj.k ds l ædk ea ml vf/kdkjh ds vknS kka dks fy [ksck A l & og l keku; Mk; jh vksj vkj {kh dñnz ds l Hkh vU; jftLVjks dks fy [krk gS A og ns [krk gS fd i fyl xtV vksj fdfeuy buvsyhtbl xtV dh Qkbya v ru j [kh tkrh gS vksj muea l ekfo"V l Hkh vknS k vksj l puk; s tks LVkQ l s l ædk/kr gS ; k LVkQ ds dk; Z l s l ædk/kr gS l ko/kkuhi mD ukv fd; s tkrS gS A og xte pksdhnkj }kjk ; k futh 0; fDr; ka }kjk dñnz es fji kZ fd; s x; s l Hkh tle dks , oa eR; q i atidr gA</p>
<p>i nuke & izkku vkj {kd ¼xLrh½</p>	<p>drD;</p>	<p>dñnz fyfi d ds vfrfjDr i R; æ vkj {kh dñnz ea de l s de , d e[; vkj {kd l æXu fd; k tkrk gS A tks xLrh e[; vkj {kd ds : i es tkuk tkrk gS A tks vkj {kd dñnz ds {ks= ea vij/k/k vksj vij/kf/k; ka ds l ædk es tkudkjh , df=r djus e[tkus gsrq cjs pfj= ds 0; fDr; ka dh fuxjkuh es vksj l keku; r; k vij/k/k dks irk yxkus vksj jkdus es dñnz vf/kdkjh dk l gk; d gA vij/k/k ds jkdFkke ds l ædk ea ml ds drD; bl v/; k; ds [kUM 9 ea Li"V fd; s x; A irk yxkus ds l ædk es e[; vkj {kd dks i kjlk djuk i Mrk gS vksj ; fn vko'; d gq/k rks fd l h Hkh vij/k/k es vtoSk.k dj l drk gS tks fd dñnz vf/kdkjh dh vuq fLFkr ea l fpr fd; k x; k gks ; k fo'kSk : i l s vfhkfyf [kr fd; s tkus okys dkj.kks l s ft l s dñnz vf/kdkjh djus ds fy; s vodk'k es u gkA ¼½ g l fuf'pr djuk fd l Hkh xte pksdhnkj vi us vi us xkks ea jgrs gS vksj mu l Hkh fo'k; ka dh</p>

		<p>fj i k/V fd; s g&ft l dks fj i k/V djus ds fy; s os dkuu }kjk vi s{kr gA 1/3 1/2; g l fuf'pr djuk fd ukxfjd i s'kaujks jftLVj es i fo"V 0; fDr D; k thfor gS vks vi us fuokl es i fforu ugh fd; s g&A 1/4 1/2 mi fujh{kd ; k l gk; d mi fujh{kd dh vui fLFkr es fdl h l inX/k ; k vi kdfird er; q ds LFku es tkuk vks ; fn ; g fo'okl djus fy; s dkj.k gks fd er; q ds dkj.k dh tkp ds fy; s vks er; q l eh{kk djus ds fy; s mi fujh{kd ; k l gk; d mi fujh{kd ek&s ij 'kh?kark l s i gbus es l {ke ugh gksk rc er; q ds dkj.k dh tkp djuk vks er; q ijh{kk yuuk A 1/5 1/2 jk i r dh tkp ; g l fuf'pr djus dh nf"V l s djuk fd D; k i 'kq pjk; s x; s g& ; k ugh A 1/6 1/2 Hkh ekeys ftuea vke l Mel ; k vl; l koftud l Ei fRr dks upl ku fd; k x; k gS vks egRo dh l Hkh cks tS s LFkuh; : i l s Ol y dks {kr vks Hk; rFkk vQokg dk i l kj ukv/ djuk A 1/7 1/2 e/; i n'sk ds ftyea 15 Qjoh ds i wZ ok"kd : i l s er; q l kf[; dh vks vijk/k] xte ukv/ cpl ds fooj.k ukv vks nl es], s s xteka ds fy; s fVli .kh Hkjuk tS k fd dyDVj fu/kkZjr dja A</p>
i nuke vkj {kd	drD;	<p>1/1 1/2 xj Qf kj 'knpk 0; fDr; ka dh vui {kk djuk A 1/2 1/2 Mel xLr A 1/3 1/2 dkuu , oa 0; oLFkk cuk; s j [kus ds iz kst u ds fy; s vks vijk/k jkus ds fy; s cktjks es mi fLFkr jguk A 1/4 1/2 Eeuks dh rkehyh vks okj a/ks dk fu"i knu A 1/5 1/2 fDr; ka ds l inX/k ny ij fuxjkuh vks fuxjkuh ds v/khu 0; fDr; ka dh tkp A 1/6 1/2 of' k"V tkp tS s fuxjkuh ds v/khu 0; fDr; ka ; k fo'kSk [kjlc pfj= okys 0; fDr; ka vks l inX/k 0; fDr; ka dk irk fBdkuk ; k /kdk dh tkudkj l fuf'pr djus ds fy; s A</p>

v/; k; &4 %ešufy&3½

I p̄uk ds vf/kdkj vf/kfu; e 2005 ds v̄lrx̄r tu l kekl; ds
v̄oykdukf̄kz mi ȳc/k fcl̄n̄pkj tkudkjh

dk; k̄y; īf̄yl v/kh̄{k̄d ftyk&jhok

īf̄yl f̄ol̄kk̄x

1& I αBukRed ifjp;

I h̄kk̄xh; eđ; ky; dk ftyk gSA ftyk īf̄yl cy eafuEukud̄ kj cy Lohdr̄ ḡA

dz	fooj.k	īf̄v-	vīf̄-	mīf̄-	j-fu-	fujh-	l̄es	mfu-	l̄mfu-	iz vkj-	vkj-	cky vkj-
1-	Lohdr̄	01	01	09	01	21	01	50	66	200	801	14

īf̄yl v/kh̄{k̄d dk; k̄y; jhok ea dk; j̄r dk; īkf̄yd ¼, e½ dk fooj.k fuEukud̄ kj ḡA

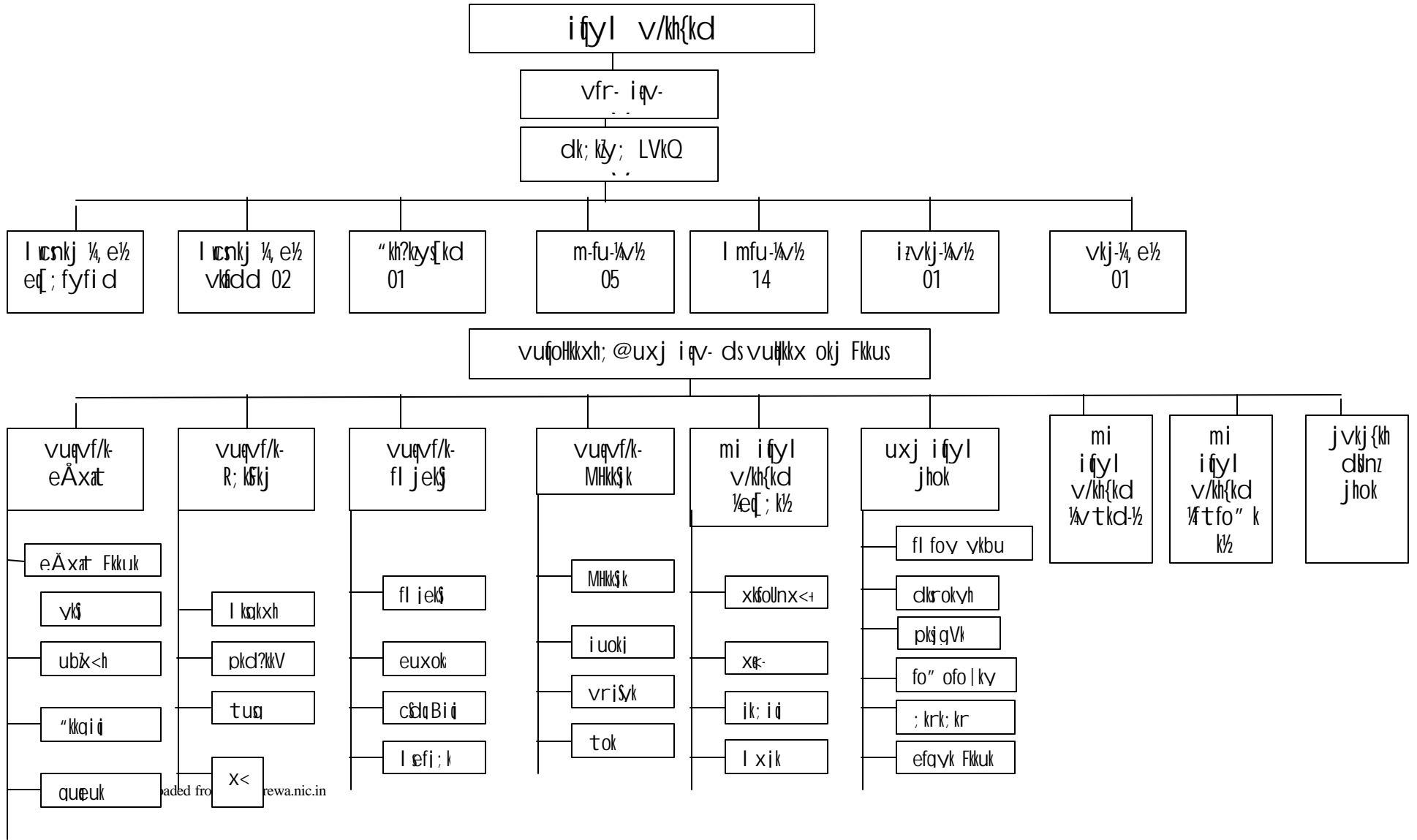
dz	fooj.k	l̄esnkj	"kh̄?kȳs̄{k̄d	m-fu-¼/½	l̄mfu- ¼/½	izvkj-¼, e½	vkj-¼, e½
1-	Lohdr̄	03	01	05	14	01	01

ftyk eđ; ky; jhok ea īf̄yl v/kh̄{k̄d ds dk; k̄z ea l̄g; k̄x ds fy; s v̄fr̄f̄jDr
īf̄yl v/kh̄{k̄d inLFk ḡA bl ds v̄fr̄f̄jDr f̄tys ea d̄y 06 vūh̄kk̄x ḡs tgka ij īf̄yl
jktif=r vf/kdkjh vius vius vūh̄kk̄x dk mij̄k̄Dr m̄Yys̄[kr dr̄D; ka ds vuđ kj dk; Z
l̄Eikfnr dj jgs ḡA ftyk jhok ea d̄y 28 Fkkuk , oa 18 īf̄yl p̄k̄s̄d; ka ḡs A Fkkuks es
fujh̄{k̄d@ mi fujh̄{k̄d Lrj ds vf/kdkjh , oa p̄k̄s̄d; ks ea l̄mfu- Lrj ds vf/kdkjh īh̄kk̄jh ds
: ī ea dk; j̄r ḡs f̄tuds dr̄D; ka dk m̄Yys̄[kr fd; k x; k ḡA

ftyk eđ; ky; ea dk; k̄y; hu dēp̄kf̄j; ka }k̄jk m̄Yys̄[kr dk; k̄z dk l̄Eiknu
fd; k tkrk ḡSA bl ds v̄fr̄f̄jDr ftyk fo" k̄sk "kk[k̄k ea vl̄p̄uk l̄Ecd̄kh dk; j̄ jktūs̄rd
x̄fr̄fof/k; k̄ī ikl̄ iks̄Z] p̄fj= l̄R; ki u l̄Ecd̄kh dk; Z l̄Eikfnr fd; k tkrk ḡA Mh-l̄h-vkj-ch-
, e-vksch- Mh hch }k̄jk fQx̄j fīv̄] l̄v̄] l̄Ecd̄kh dk; Z l̄Eikfnr fd; k tkrk ḡA , Q-, l̄-, y-
"kk[k̄k }k̄jk l̄Eif̄Rr l̄Ecd̄kh vij̄k/k̄k̄s̄, oa "kj̄h̄j l̄Ecd̄kh x̄h̄kh̄j vij̄k/k̄ks̄ ds ?k̄f̄Vr ḡks̄us ij ek̄s̄ds
ij tk̄d̄j ?k̄Vuk LFky dk fujh̄{k̄.k dj viuh̄ f̄j̄ik̄v̄ l̄Lr̄r dh tkrh ḡA bl ds v̄fr̄f̄jDr ex̄z
l̄s l̄Ecd̄kr id̄j .k̄ks ea MkQV̄ cuokdj tk̄p̄ gr̄ql̄ kx̄j Hk̄st̄k tkrk ḡA

f̄tys ea vūqt̄k̄r , oa tut̄k̄r ox̄z ds yk̄s̄ks ds fy; s Fkkuk vt̄kd- LFkk̄fi r ḡs
tgka ij 01 mi īf̄yl v/kh̄{k̄d īh̄kk̄jh ds : ī ea inLFk ḡA vūqt̄k̄r , oa tut̄k̄r l̄s
l̄Ecd̄kr id̄j .k̄ks dh foopuk] p̄kyku]f" kdk; r tk̄p̄ bR; kfn dk; Z l̄Eikfnr fd; k tkrk ḡA
bl h̄ id̄kj efgyk Fkkuk v̄lrx̄r ik̄f̄jok̄f̄jd fookn dks l̄ȳg l̄e>k̄s̄k̄ djkus gr̄q efgyk
ij̄ke" k̄z d̄bz dh LFkk̄i uk dh x̄bz ḡs tgk ij efgyk̄v̄ks l̄s l̄Ecd̄kr ik̄f̄jok̄f̄jd id̄j .k̄ks dk
fujkdj.k fd; k tk jgk ḡA

ftyk ifyl cy jhok



ÑR; ka ds fuoögu grqfu; e] fofu; e] vuqñsk] funñ'kdk vks vñkys[k

4-1 ykd i kf/kdj .k vFkok ml ds vf/kdkfj; ka , oa dfez ka }kjk vi us ÑR; ka ds fuoögu ds fy, /kkfjr rFkk iz, sx fd, tkus okys fu; e] fofu; e] vuqñsk] funñ'kdk vks vñkys[k dh l ph fuEu ik: lk ij iZnr dj, a¼ g l puk iR; d vñkys[k ds fy, iFkd l siZnr dj

dz	vñkys[k ksk dk foj .k	vñkys[k ksk dk iZkj
1-	vñkys[k dk uke	1- eiz ifyl vf/kfu; e , oai fyl jx; mys' ku 1861& bl ds vñkys[k ifyl vf/k- dh "kfDr; ka , oa deþkfj; ka ds drD; o vuq kkl ukRed dk; bkg; ka l Ecdk tkudkj dh mYys[k fd; k x; k gS 2- Hkkjrh; n.M l ñgrk , oa tkrk QkStnkjh & bl ds vñkys[k ?kVr ?kVukvks ds vuq kj mYys[k /kkjvks ds vñkys[k dk; bkg dh tkrh gS 3- foRrh; fu; e & bl ds vñkys[k ifyl v/kh{kd dksfn; s x; s foRrh; "kfDr; ka ds vñkys[k Lohdr l Ecdk dk; bkg] vkj .k bR; kfn dk dk; Zfd; k tkrk gS 4- th-vksh- & l keU; ifji = iñrd ds vñkys[k jkT; "kkl u l s l e; & l e; ij tkjh fu; eka ds vñkys[k ikyu l ñuf" pr fd; k tkrk gS 5- l k; vf/kfu; e] eka j Oghdy , DV] , oa vl; l e; & l e; tkjh vf/kfu; e& bl ds vñkys[k l Ecdk ?kVukvks ds vuq i dk; bkg; ka dh tkrh gS 6- ifrcdkRed & l fnX/k , oa vknru vij k/k; ka ds fo: } /kkj 110] ftyk cnj] , u, l -, - ds vñkys[k dk; bkg; ka dh tkrh gS 7- ekbu j , DV& bl ds vñkys[k voSk "kjk cukus oky tñk l VVkj bR; kfn dh dk; bkg; ka dh tkrh gS 8- , u-Mh-i-h, l - , DV& bl ds vñkys[k voSk xkatk dk 0; ki kj djus okys ds fo: } dk; bkg; ka dh tkrh gS 9- ofj' B dk; k; ka l s l e; & l e; ij iklr funñ' k , oai fji = & iklr funñ' kka dk ikyu l ñuf" pr fd; k tkrk gS

ifyl v/kh{kd dk; k; ea a e[; r% vfrjDr ifyl v/kh{kd d{k] e[; fyfi d] vkñd d{k] "kh?kys[k d{k] LFkki uk d{k] vij k/k "kk[kk] f" kdk; r d{k , oa l keU; d{k LFkfi r gS tgka ij ifyl vf/kdkfj; ka deþkfj; ka l s l Ecdk l Hkh iZkj ds fjdkMZ , oa vij k/ka l s l Ecdk tkudkj] vñkys[k] = l R; ki u] f" kdk; r] ikl i k; Z bR; kfn l Hkh dk; Z l Ei kfnr fd; s tkrh gS

fu; e] fofu; e] vuqñsk] funñ'kdk vks vñkys[k dh ifr dgka l s iklr dj l drs gS	<p>irk % dk; k; ifyl v/kh{kd ftyk&jhok % e-i z½</p> <p>nijHkk" k % & 07662&258800 % dk; k; z½</p> <p>QDI % & 07662&258800</p> <p>b&ey % & sp_rewa_2k@ sanchar net.in</p> <p>vl; % & 07662&251133] 256168 % dk; k; z½</p>
---	--

fu; e] fofu; e] vuqñsk] funñ'kdk vks vñkys[k % foHkkxh; iko/kku vuq kj dh ifr dks iklr djus dk 'kkl u ds fu; eka ds vuq kj fu/kkZjr 'kñd & "kkl u }kjk fu/kkZjr jk" k tek djus iA

ifyl v/kh{kd dk; kzy; ea l dkkfjr iftdkvs , oa vU; vflkys[kka dh tkudkjh

1 - dz	vflkys[k dk uke	vflkys[k dk idkj rFkk ekbzksQYe if=dkj fdrkc bR; kfn	vflkys[k dh idfr , oa fooj.k	vflkys[k dh vof/k
1	2	3	4	5
1	ifyl jktif=r vf/kdkfj; ka , oa vjktif=r vf/kdkfj; ka rFkk lmfu- lsvkj{kd rd dh l ok iqlrdk	l ok iqlrdk	l ok dky dk l a wkz fooj .k	LFkk; h fjdkMZ gA
2	; k=k HkRrkj fpdfRI k ifri firz	iftdk	l e; & l e; ij iLr r nkoka dk fooj .k , oafujkdj .k	vLFkk; h
3	i Fke Jskh@f}rh; Jskh , oarrh; Jskh %j kT; Lrjh; ½ vf/kdkjh @depkjh dh inde l ph	cpd yv	l e; & l e; ij id kfjr inde l ph	LFkk; h
4	jklVj	iftdk	v-tk@v-t.tk@fi NML oxz bR; kfn gsrq ifr" kr ds eku l s rrh; Jskh fyfi dh; , oa pr qkz Jskh depkfj; ka dh fu; qDr; ka @inkbufr; ka dk fooj .k	LFkk; h
5-	bUMDI Vw, l -vkj-jft-	iftdk	vkj{kd , oa i zkku vkj{kdks dh l ok , oa inkLFkki uk l Ecdkh tkudkjh	LFkk; h
6-	vodk" k jftLVj	iftdk	vfr-iqv- l sydj vkj{kdks rd ds vodk" k l Ecdkh tkudkjh o' kbkj rS kj dh tkrh gA	vLFkk; h
7-	vksch- jftLVj	iftdk	l Hkh idkj ds ikfjr vkrs" kks dk blnkt fd; k tkrk gA	LFkk; h
8-	if" k{k.k jftLVj	iftdk	vf/k@depkfj; ka }kjk foHkUu idkj ds fd; s x; s if" k{k.k l Ecdkh tkudkjh	vLFkk; h
9-	cd Mv/ bwh jftLVj	iftdk	ckgj Hksth xbz l ok iqlrdks ds dkj.k tks blnkt jg tkrs gS mudk mYys[k bl jft- eafd; k tkrk gS o l ok iqlrdk oki l	vLFkk; h

			vkus ij ml dk blnkt fd; k tkrk gS	
10-	oru of} Lohdr	iftdk	vr-igv- l s vkj {kd rd ds deZ dks ns oruof}; ka dk mYyqk fd; k tkrk gS	vLFkk; h
11-	ds' k cpd	iftdk	dkskky; , oa vU; dk; kzy; ka l s iklr l Hkh izdkj dh /kujkf" k; ka dk vknku & inku dk blnkt fd; k tkrk gS	LFkk; h
12-	fcy jftLVj	iftdk	dk; kzy; }kjk dkskky; ea iLr; fd; s tkus okys ns dks dk bnkt fd; k tkrk gS	LFkk; h
13-	pd jftLVj	iftdk	dkskky; l s iklr l Hkh pdks dk blnkt fd; k tkrk gS	vLFkk; h
14-	cdl MKQV	iftdk	ckgj l s vkus okys , oa dk; kzy; l s Hksth tkus okyh jkf" k; ka dk blnkt fd; k tkrk gS	LFkk; h
15-	oru iath jftLVj	iftdk	vf/k@depkfj; ka ds oru dk blnkt fd; k tkrk gS	LFkk; h
16-	l qjU; w" ku jft -	iftdk	bl ds l ok fuorR gkus okys depkfj; ka dh tkudkj	LFkk; h
17-	i' ku v' knku iath	iftdk	01-01-05 l s fu; Dr vf/k, oa depkfj; ka dh tkudkj	LFkk; h
18-	vire oru iek.k&i=	iftdk	LFkk- l s vkus okys , oa tkus okys deZdk oru foj.k dk blnkt fd; k tkrk gS	vLFkk; h
19-	ekj/ okjv/	iftdk	ekj/ okjv/ fcyks dk blnkt	vLFkk; h
20-	vkdfLed enks ds vkj.k dh iath	iftdk	bl iath ea iVhsy jMhty] VsyhOkuj fctyh] bR; kfn ns dks dk blnkt fd; k tkrk gS	vLFkk; h
21-	0; ; i=d i	iftdk	bl iath ea "kkl u }kjk iklr vkokv/u , oa dk; kzy; }kjk 0; ; l Ecdk tkudkj dk mYyqk	vLFkk; h
22-	v" kkl dh; fuf/k ds' kcpd	iftdk	bl iath ea v" kkl dh; fuf/k l s iklr jkf" k , oa Hkqrku dk blnkt fd; k tkrk gS	vLFkk; h
23-	l keku; Hkfo'; fuf/k	iftdk	bl iath ea vf/k@depkfj; ka ds oru l s dVks'h l Ecdk jkf" k dk blnkt fd; k tkrk gS	LFkk; h
24-	foHkxh; tkp jftLVj	iftdk	bl jft- ea vf/k@deZ ds fo: } vknf" kr foHkxh; tkpks dk mYyqk fd; k tkrk gS	LFkk; h
25-	fuyEcu jftLVj	iftdk	bl jft- ea vf/k@depkfj; ka ds fuyEcu l Ecdk tkudkj dk mYyqk fd; k tkrk gS	LFkk; h
26-	f" kdk; r i fyl	iftdk	i fyl vf/k@depkfj; ka ds	vLFkk; h

			fo: } iklr gkus okyh LFKkuh;] ofj' B dk; kȳ;] , oa foHkLU vk; ks l s iklr f" kdk; rks dk blnkt iFkd&iFkd jft-cukdj fd; k tkrk gS	
27-	f" kdk; r ¼turk½		turk fo: } turk l s l Ecf/kr iklr gkus okyh LFKkuh;] ofj' B dk; kȳ;] l s iklr f" kdk; rks dk blnkt iFkd&iFkd jft-cukdj fd; k tkrk gS	vLFkk; h
28-	vkEl Zyk; l d jft-	iftdk	vkEl Z yk; l d l Ecdkh vkonu i=ks dk mYysk fd; k tkrk gS , oa l Ecf/kr foHkx dks vuq ka k @vuq ka k ugh l Ecdkh tkudkj i f'kr dh tkrh gS	vLFkk; h
29-	Hkou vkokl xg , oa vU; fuekZk dk; Z	iftdk	i' kkl dh; Hkouks , oa vkokl h; Hkouks ds fuekZk l Ecdkh iLrko l Ecdkh tkudkj dk mYysk	vLFkk; h
30-	edku fdjk; k iath	iftdk	ftys ea inLFk l Hkh vjktif=r vf/kdkfj; ka @deZ dks vkokl xg mi yC/k djkus l Ecdkh tkudkj	vLFkk; h
31-	fujh{k.k	iftdk	ofj' B vf/kdkfj; ka , oa ifyl v/kh{k d } vrfjDr ifyl v/kh{k d rFkk vufoHkxh; vf/kdkfj; ka }kjk fd; s x; s fujh{k.k l Ecdkh tkudkj	vLFkk; h
32-	l Eed okjV	iftdk	foHkLU U; k; ky; ks l s iklr l Eed , oa okj/ks dh tkudkj	vLFkk; h
33-	dCty ol y	iftdk	l Hkh idkj dh Hksth xbZ /kujk" k; ka , oa nhxj LFKuks l s iklr dCty ol y l Ecdkh tkudkj dk mYysk	vLFkk; h
34-	Mk; tLV	iftdk	ftys ds vanj ?kfVr gkus okys l Hkh xHkhj idj.ks dk blnkt fd; k tkrk gS	LFkk; h
35-	vkod &tkod iath	iftdk	ofj' B dk; kȳ; ks , oa vU; foHkxks l s iklr gkus okys , oa dk; kȳ; l s Hkst's tkus okys i=ks dk blnkt	LFkk; h
36-	LVkd jftLVj	iftdk	ysku l kexh , oa vU; vkdfLed en l s dz fd; s x; s l kekus dk blnkt	vLFkk; h
36-	MM LVkd	iftdk	l Hkh idkj ds LFkk; h "kkl dh; l Ei fRr dk mYysk fd; k tkrk gS	LFkk; h
37-	u'Vhdj.k	iftdk	fu/kkjr l e; kof/k ds i" pkr fjdKks ds u'Vhdj.k dk mYysk	LFkk; h
38-	yk; cjh jftLVj	iftdk	l Hkh "kkl dh; iLrdks dk blnkt	LFkk; h

v/; k; &5 %ešuyy&4½
uhfr fu/kkj .k o dk; kko; u ds l ædk ea turk ; k tu&ifruf/k l s
ijke'kz ds fy, cukbz xbz 0; oLFkk dk fooj.k

5-1 uhfr fu/kkj .k gsrq %

D; k ykd ikf/kdj .k }kjk uhfr fu/kkj .k ds l ædk ea turk ; k tu&ifruf/k dh
 ijke'kz@Hkkxhnhkj dh dkbz iko/kku gS ; fn gsrks 0; oLFkk dk fooj.k bl ik: i
 ea iLrq dja

Ø- l a	fo"k; @NR; dk uke	D; k bl fo"k; ea turk dh Hkkxhnhkj vfuok; Z gS %gk@ughkz	turk dh Hkkxhnhkj l fuf'pr djus ds fy, dh xbz 0; oLFkk
fujd			

5-2 uhfr ds dk; kko; u gsrq %

D; k ykd ikf/kdj .k }kjk uhfr ds dk; kko; u ds l ædk ea turk ; k tu&ifruf/k l @
 dh ijke'kz@Hkkxhnhkj dh dkbz iko/kku gS ; fn gsrks 0; oLFkk dk fooj.k bl ik: i ea
 iLrq dja

Ø- l a	fo"k; @NR; dk uke	D; k bl fo"k; ea turk dh Hkkxhnhkj vfuok; Z gS %gk@ughkz	turk dh Hkkxhnhkj l fuf'pr djus ds fy, dh xbz 0; oLFkk
1	fujd	fujd	fujd

v/; k; &6 %euyy&5½

yk d i kf/kdkjh ds ikl ; k mudsfu; æ .k eami yC/k nLrkostka dk

idxl (categories) ds vu d kj fo o j .k

yk d i kf/kdj.k ds ikl mi yC/k 'kkl dh; nLrkostka dh tkudkj n s g r q fuEu
 ik: lk dk iz kx d j A l k f k gh ; g Hkh crk, afd ; g nLrkost dgka mi yC/k j g r s g p t s s fd l fpo
 Lrj ij] fun s kky; Lrj ij] vU; A V i ; k ^vU; * dk mi ; kx d j us ds L f k k u ij Lrj dk m Y y s [k
 d j k

6-1 dk; ky; ds fo i k l u i d k j ds v f k y s [k n L r k o s t k a d h t k u d k j h
 dk; z d {k } k j k l d k f j r f d ; s t k j g s v f k y s [k a d k f o o j .k

1 - d z	i d x l	v f k y s [k d k i d k j		n L r k o s t i k l r d j u s d s f y ; s i f 0 ; k	/k j d @ f u ; æ . k k / k h u
		i f j p ;	i d f r		
1 1	iz' kkl dh;	fo-tkp] fu; e] l kekl; i t r d i f j i =] v k p j . k l f g r k	i t r d , o a Q k b y	fyf[kr vkonu	6 <u>i f y l v / k h k d d s</u> <u>v f / k u L F k</u> " k h ? k y s [k d " k k [k k
2					
3	iz' kkl dh;	l o k i [l r d k] o r u o f } ; k k ; r k l p h] v o d k " k j l t k] b l u k e v u p l E i k f u ; q D r	j f t L V j , o a Q k b y	fyf[kr vkonu	L F k k i u k " k k [k k
4	iz' kkl dh;	v k E l z y k ; l d] F k k u k @ p k s d h l E c d k h t k u d k j h n j H k k ' k t k u d k j h	j f t L V j	fyf[kr vkonu	l g k ; d f y f i d 1 " k k [k k
5	iz' kkl dh;	edku fdjk; k] v f r e i f r o n u	j f t L V j	fyf[kr vkonu	l g k ; d y f y f i d 2
6	iz' kkl dh;	p f j = l R ; k i u] i k l i k s / z	j f t L V j	fyf[kr vkonu	f t y k f o " k s k " k k [k k
7	foRrh;	o r u] H k R r k] e s M d y] t h i h , Q .] M h i h , Q .] v f x e] i f j o g u O ; ;] e k s / j o k j a / b R ; k f n	j f t L V j	fyf[kr vkonu	v k i d d " k k [k k
8	vU;	v i j k / k l E c d k h t k u d k j h	j f t L V j	fyf[kr vkonu	j h M j i q v - " k k [k k
9	vU;	l E e d o k j a / d h t k u d k j h	u L r h	fyf[kr vkonu	T ; M h f " k ; y " k k [k k

v/; k; &7 %ešuy&6½

7-0 ckm i fj "knk i febr; ka , oa vl; fudk; ka dk foj .k
 Ni ; k ykd i kf/kdj .k l s l Ec) ckm i fj "knk i febr; ka , oa vl; fudk; ka dk i fklr
 foj .k fuEu ik: lk ds vk/kkj ij nA
 fujd

v/; k; &8 %ešuy&7½

8-0 ykd I puk vf/kdkfj ; ka ds uke] i nuke , oa vl; fof'kf"V; ka
 Ni ; k ykd i kf/kdj .k ea dk; j r-ykd I puk vf/kdkfj ; k I gk; d ykd I puk
 vf/kdkfj ; ka rFk foHkxh; vihy vFkFj Vh ds l cak ea fuEu ik: lk ea I puk
 i Lr djA

ykd i kf/kdj .k dk uke % i fyl v/kh{kd ftyk jhok

I gk; d ykd I puk vf/kdkjh %

Ø- l a	uke	i nuke	, l Vh Mh dkm	nij Hkk"k		QDI	b&ey	irk
				dk; kzy;	vkokl			
1	Jh ohj fl g c?ky	mi i fyl v/kh{kd ved; k½ jhok	07662	256168	258002	258800	sp_rewa_2k @ sanchar net.in	i fyl v/kh{kd dk; kzy; jhok

ykd I puk vf/kdkjh %

Ø- l a	uke	i nuke	, l Vh Mh dkm	nij Hkk"k		QDI	b&ey	irk
				dk; kzy;	vkokl			
1	Jh vkj- ds tšj	vfrfj Dr i fyl v/kh{kd jhok	07662	251133	251155	258800	sp_rewa_2k @ sanchar net.in	i fyl v/kh{kd dk; kzy; jhok

i fke vihyh; vf/kdkjh %

Ø- l a	uke	i nuke	, l Vh Mh dkm	nij Hkk"k		QDI	b&ey	irk
				dk; kzy;	vkokl			
1	Jh on i dk" k "kekZ	i fyl v/kh{kd jhok	07662	258800	258801	258800	sp_rewa_2k @ sanchar net.in	i fyl v/kh{kd dk; kzy; jhok

uk% I eLr dknye dks l cā/kr ds uke , oa i rka ds vuq kj Hkj k tkos A

v/; k; &9 ½eñy&8½
fu.k; yus dh i fØ; k

9-1	fdl h fo'k; ij fu.k; yus ds fy, ykd ikf/kdj.k ea D; k i fØ; k vi uk; h tkrh gš ¼ fpoky; eß; wvy vkš fcthud eß; wvy ds fu; ekš vkfn fu; eka dk mi; kx fd; k tk l drk gš	ftyk iñyl cy ea fofHkuu Lrjks ij fu.k; l iñyl jk; wš" ku j iñyl , DV 1861 jth-vksi h- ofj' B dk; kš; ks l s ikr funš" kš Hknfo- tk-Qkš l kš; vf/kfu; e , oa fofHkuu vf/kfu; eka , oa dkuuks dks nf' Vxr j [krs gq fofHkuu Lrj ij fu.k; fy; k tkrk gš
9-2	fdl h fo'kš fo'k; ij fu.k; yus ds fy, fu/kkšjr fu; e , oa i fØ; k D; k gš vFkok fu.k; yus ds fy, fdl & fdl Lrjka ij fopkj fd; k tkrk gš	vud' dku l Ecałh fo'k; ka ij 90 fnu ds Hkhrj vñk; kst u i= U; k; ky; ea i Lrñr fd; s tkus gñq fu; e gš 2- is" ku l Ecałh idj.k fujkdj.k gñq 01 o' kš i wš rš kj dj Hkštus dk iko/kku gš
9-3	fy, x, fu.k; dks turk rd igpkus ds fy, D; k O; oLFkk gš	vijkf/kd idj. kks ea foopuk l Ecałh ifdz k ds vñr xñr fxjQñkj dh l puk rñd ky vFkok rhore ek; e l s ml ds ifjtuks , oa fj" rñkjks dks l ñpr fd; k tkrk gš f" kdk; r ds ifj. kkeka l s vkon dks dks voxr dj kus dh ifdz k gš vU; fu.k; ka dh tkudkj h turk }kj k vki škk djust ij rñd ky mi yC/k dj kbz tkrh gš
9-4	fofHkuu Lrj ij fdu vf/kdkfj; ka dh l ñrñr fu.k; yus ds fy, ikr dh tkrh gš	vko" ; drk gkus ij foopuk l Ecałh dk; l ea iñyl v/kh{k d Lrj rd fu.k; ifdz k yh tkrh gš bl h idkj pñj= l R; ki u jvkEl Z yk; l d ds idj. kks ea Fkkuk i Hkkj h , oa jktif=r vf/kdkfj; ka dh l ñrñr dh vko" ; drk gkrh gš i' kkl fud dk; kš ea Hkh Fkkuk i Hkkj h , oa jktif=r vf/kdkfj; ka dh l ñrñr fu.k; yus ds fy; s vko" ; d gkrh gš A
9-5	vñre fu.k; yus ds fy, ikf/kdkfjr vf/kdkjh\	ftyk iñyl cy l s l Ecałkr , oa vijk/kks l s l Ecałkr idj. kka ea vñre fu.k; yus ds fy; s ikf/kdr vf/kdkjh iñyl v/kh{k d gkrk gš

9-6 eñ; fo'k; ftl ij ykd ikf/kdj.k }kj k fu.k; fy; k tkrk gš ml dk foj.k fuEu ik: lk ea vyx l s i Lrñr dñ

Ø- l a	
fo'k; ¼ ftl ds l ñak ea fu.k; fy; k tkuk gš	vijkf/kd idj. kks , oa fofHkkxh; vud' kkl ukRed dk; bñgh l Ecałh fo'k; ks ea
fn'kk&funš k ¼; fn gks rñš	iñyl jk; wš" ku] Hknfo- tk-Qkš 'kkl u , oa fofHkkxh; funš" kks , oa vf/kfu; eks a ds vud' kj
fu.k; yus dh i fØ; k	i' kkl fud , oa fofHkkxh; vud' kkuRed dk; bñgh ea iñyl v/kh{k d Lo; a fu.k; yrs gš vijkf/kd idj. kks ea vk; s l kš; ds vk/kj ij Fkkus dk Hkkj l k/d vf/kdkjh fu.k; yrs gš
fu.k; yus ea' kkfey vf/kdkjh ds uke	&
fu.k; yus ea' kkfey vf/kdkfj; ka dh l Ei dz l puk	&
fu.k; ds fo:) dgka vkš dš svi hy dñ	fofHkkxh; idj. kks ea iñyl mi egkfujh{k d} iñyl egkfujh{k d} iñyl egkfuns" kd} jkT; "kkl u , oa U; k; ky; dh vkš dš" k% vi hys dh tk l drh gš

v/; k; & 10 %e&py&9½

10- vf/kdkfj; ka vkj de'pkfj; ka dh funf'kdk

Ñi; k tkudkj h fuEu ik: lk ea tui nokj nA

Ø- l a	uke	i nuke	, l Vh Mh dk&M	njHkk"k		QDI	b&esy	i rk
				dk; kÿ;	vkokl			
1-	Jh on idk'k 'kekZ	ifyl v/kh{kd jhok	07662	258800	258801	258800	sp_rewa_2k @ sanchar net.in	ifyl dk; kÿ; jhok
2-	Jh vkj0cd0t&]	vfr0ifyl v/kh{kd	07662	251133	255155	258800	sp_rewa_2k @ sanchar net.in	ifyl dk; kÿ; jhok
3-	Jh ohj fl g c?ksy]	mi ifyl v/kh{kd ed; ky;	07662	256168	258002	258800	sp_rewa_2k @ sanchar net.in	ifyl dk; kÿ; jhok
4-	Jh l qkhyjat u fl g vutkkx MhkkS k	vu@vf/kdkjh MhkkS k	07661	282967	282967	&	&	&
5-	Jh idk'k feJk	Fkkuk i Hkkjh MhkkS k	07661	282950	282950	&		&
6-	Jh xgyc fl g	Fkkuk i Hkkjh vrjSyk	07661	235960	&	&	&	&
7-	Jh , uoi hofl g pkSjku	Fkkuk i Hkkjh i uokj	07661	25950	&	&	&	&
8-	Jh 'kq'k /khj t	Fkkuk i Hkkjh tok	07661	282760	&	&	&	&
9-	Jh nq' k jkBkS vutkkx R; k&kj	ifyl vutkkxh; vf/kdkjh R; k&kj	07661	282507	282507	&	&	&
10-	Jh vkj0i h- 0'kekZ	Fkkuk i Hkkjh l kqkxh	07661	282320	&	&	&	&
11-	Jh jfo'kdj i k&M	Fkkuk i Hkkjh tusg	07661	239579	&	&	&	&
12-	Jh , l , e vyh	Fkkuk i Hkkjh pkd?kkV	07661	283239	&	&	&	&
13-	Jh , l O i hofl g	Fkkuk i Hkkjh x<	07661	284545	284545	&	&	&
14-	Jh'kq khyjat u fl g	i Hkkjh , l Mhvksh	07660	260633	&	&	&	&

	vutkkx fl jekj	fl jekj						
15-	Jh vkj-ds fjNkfj; k	Fkkuk i Hkkjh fl jekj	07660	260633	&	&	&	&
16-	Jh vkj-, e- feJk	Fkkuk i Hkkjh cfdqBig	07660	277228	&	&	&	&
17-	Jh ,u-i-h- f}onh	Fkkuk i Hkkjh l efj; k	07660	266549	&	&	&	&
18-	Jh ctjkt fl g	Fkkuk i Hkkjh l xjk	07662	263244	&	&	&	&
19-	Jh ohjfl g c?ksy vutkkx eq; k jhok	mi ifyl v/kh{kd %eq; k½ jhok	07662	256168	258002	&	&	&
20-	Jh ch-Mh- f=i kBh	Fkkuk i Hkkjh xkfolnx<	07662	261530	261530	&	&	&
21-	Jh Ogh-i-h- fl g	Fkkuk i Hkkjh xq	07662	267206	258002	&	&	&
22-	Jh , -i-h- fl g	Fkkuk i Hkkjh jk; ij dpq	07662	265204	265204	&	&	&
23-	Jh , l -i-h- f}onh vutkkx eAxat	ifyl vuq vf/k- eAxat	07663	270567	270567	&	&	&
24-	Jh th-ds feJk	Fkk-i z eAxat	07663	270341	&	&	&	&
25-	Jh egs' k pkfj; k	Fkk- iz gupek	07664	288530	288530	&	&	&
26-	Jh l rh'k feJk	Fkk-i z ubx<h	07663	285119	&	&	&	&
27-	ekg- vl ye [kka	Fkk-i z ykj	07663	286231	&	&	&	&
28-	Jh , l -, e- mi k/; k;	Fkk-i z "kkgi j	07663	237692	&	&	&	&
29-	Jh gjh" k jkBkj vutkkx jhok	uxj ifyl v/kh{kd jhok	07662	241439	500400	&	&	&
30-	Jh i-h-, y- voLFkh	Fkk-i z fl foy ykbu	07662	254434	255177	&	&	&
31-	Jh vkj-i-h- i kBd	Fkk-i z dkrokyl	07662	258557	&	&	&	&
32-	Jh , l -ds f}onh	Fkk-i z fo- fo ky;	07662	230817	509009	&	&	&
33-	Jh tsMh-Hkks ys	Fkk-i z pkjgVk	07662	220577	508745	&	&	&
34-	Jh lejthr fl g	Fkk-i z ; krk; kr	07662	258511	&	&	&	&
35-	Jherh l qhrk i Vugk	efgyk Fkkuk i Hkkjh	07662	245191	256533	&	&	&

36-	Jh vkj-, l - vkB; k	mi ifyl v/kh{kd vtd-	07662	255700	&	&	&	&
37-	Jh vkj-i h- "kpyk	i Hkkjh , Q- , l -, y- ; fuV jhok	07662	246191	&	&	&	&
38-	Jh deys" k nps	i Hkkjh ftfo" kk	07662	256760	&	&	&	&

uks/%& l Hkh ds uke] mudks l k s x; s dk; k dk foj .k i rs ft l ea n j Hkk" k Ø] LFkkuh; i rk] b&ey
vkfn fn; s tkos A

v/; k; &11 %e\$uy&10%
 11-0 i fyl v/k{k d k; k; e a dk; j r vf/kdkfj; k@depkfj; k }kj k l a kfnr
 fd, tk jgs dk; k, oaekgokj oru dk foofj.k
 dk\$ky; -----

1	2	3	4	5	6
1. V.P. SHARMA		SP	16500	4208	oru fu/kkj .k fu; e 1998
2. R.K.JAIN		ASP	12750	7013	
3. R.P. SHUKLA		S.O.	11950	6573	
4. SHUSHEEL RANJANSINGH		DSP	9375	5156	
5. VEER SINHG BAGHEL		DSP	9100	5005	
6. S.P. DWIVEDI		DSP	9100	5005	
7. RAJKUMAR MISHRA		DSP	8825	4854	
8. R M TRIPATHI		INSP	8650	3720	
9. R.S.ATHIYA		DSP	8550	4703	
10. RAJMANI TRIPATHI		RI	8300	4565	
11. J-D-BHOSALEY		INS	8125	4469	
12. DURGASH KUMAR RATHOR		DSP	8000	4400	
13. HAREESH RATHOOR		DSP	8000	4400	
14. M.K.CHOORIYA		INS	7950	4373	
15. RB.SHRMA		INS	7950	4373	
16. SHRIKANT DWIVEDI		INSP	7950	4373	
17. GIRISH MISHRA		INS	7775	4276	
18. SATISH CHANDRA MISHA		INSP	7700	4235	
19. SHIVENDRA SGH		INS	7600	4180	
20. V.P. SINGH		INS	7550	4153	
21. SHEKH DHIRAJ		INSP	7425	4084	
22. D-P-SINGH		INS	7425	4084	
23. P-L-AWAASTHI		INS	7425	4084	
24. PRAKASH DUBEY		SI	7400	4070	
25. S.K. DWIVEDI		INS.	7250	3988	
26. R.K.RICHRIYA		INS	7250	3988	
27. N.P. DWIVEDI		INS	7250	3988	
		STEN			
28. S K JAIN		O	7250	3988	
29. SUNEETA PATNHA		SI	7100	3905	
30. RAM MANORATH		SI	7025	3864	
31. MO.JAWAID KHAN		INS	7000	3850	
32. R.P. PATHAK		INS	7000	3850	
33. SP PANDEY		ASI	7000	3850	
34. BHAKAR DATT TRIPATHI		INS	6950	3823	
35. MADHURESH KUMARPCORE		SI	6950	3823	
36. RAMMANI MISHRA		SI	6925	3809	
37. MO- ASLAM		SI	6875	3781	

38. R K YADAV	SI	6875	3781
39. GULAB SINGH	SI	6875	3781
40. KAMLESHWAR SINGH	ASI(M)	6875	3781
41. ADITYA PRATAP SINGH	SI	6850	3768
42. AMAR BHADUR SINHG	SI	6750	3713
43. RAMDAYAL SHRMA	SI	6750	3713
44. B.D.SHUKLA	SI	6750	3713
45. R.N.SUKLA	SI	6625	3644
46. S.M. UPADHYA	S.I.	6625	3644
47. NARESH PRATAP SINHG	SI	6625	3644
48. S N MISHRA	ASI(M)	6625	3644
	STEN		
49. A K SINGLA	O	6625	3644
50. VINOD KUMAR SINHG	SI	6500	3575
51. K.P. DUBEY	SI	6375	3506
52. P.L. JAIWAL	SI	6375	3506
53. SAMARJEET SINGH	SI	6350	3493
54. RAGHAW BHAN SINHG	SI	6250	3438
55. R N SINGH	ASI	6250	3438
56. FATABAHADUR SING	ASI	6250	3438
57. S.M.ALEE	SI	6250	3438
58. R R PANDEY	SI	6125	3369
59. RAMAWATAR BRAIYA	SI	6125	3369
60. K. L. THAKUR	ASI	6125	2634
61. MEHASH PD. MISHRA	SI	6125	3369
62. RAJESHWARI SINHG	SI	6000	3300
63. SATEESH SINHG	SI	6000	3300
64. LALLA PRASAD MISHRA	ASI	6000	3300
65. R N SHARMA	ASI	6000	3300
66. RANG BAHADUR SINGH	ASI	6000	3300
67. B P DUBEY	ASI	6000	3300
68. SURESH PRASAD VARMA	ASI	6000	3300
69. R N PANDEY	ASI	6000	3300
70. RAJENDRA PRASAD	ASI	6000	3300
71. ANNAND MOHAN PANDEY	ASI	6000	3300
72. TEJ BHAN SINGH	ASI	6000	3300
73. B M PANDEY	ASI	6000	3300
	LAB.T		
74. S K DHAGAT	EC	6000	3300
75. RITAMBHARA DWIVEDI	SUB	5900	3245
76. B.D.TRIPTHI	SI	5900	3245
77. ASOKPAL SURYAVANSI	ASI	5900	3245
78. SHANTANU PD. PAYASI	ASI	5900	3245
79. B P MISHRA	ASI	5900	3245
80. M.P.MISHRA	ASI	5900	3245
81. SHARDA PD.GUPTA	ASI	5900	3245
82. L.P. SINGH	ASI	5900	3245
83. RAMASHRIYA SUKLA	ASI	5900	3245
84. R.K. SHUKLA	ASI	5900	3245
85. RANG NATH SINGH	ASI	5900	3245
86. SHAMBHU PRASAD	HC/801	5900	3245

87.	SHYAM LAL PATEL	ASI	5800	3190
88.	GOURISHANKAR PANDEY	ASI	5800	3190
89.	KESHREE PD. MISHRA	ASI	5800	3190
90.	GOOMTEE PD TIWARI	ASI	5800	3190
91.	ARUN KUMAR TIWARI	ASI	5800	3190
92.	MOHD.YUNUS KHAN	ASI	5800	3190
93.	S P CHATURVEDI	ASI	5800	3190
94.	LAKSKAPATI PATEL	ASI	5800	3190
95.	SHAMBHU SINHRJPOOT	ASI	5800	3190
96.	RAM LALLU PATHAK	ASI	5800	3190
		HC/DC		
97.	SHITALA PRASAD	RB	5800	3190
		HC/DC		
98.	K P SHUKLA	B	5800	3190
99.	RAM DIN VISHWAKARMA	HC/676	5800	3190
100.	HARI NARAYAN	HC/158	5800	3016
101.	RAM KRIPAL TRIPATHI	HC/165	5800	3190
102.	FALGO PRASAD	HC/586	5800	3190
103.	GOVIND PRASAD	HC/488	5800	3190
104.	BRIJBHAN PRASAD	HC/186	5800	3190
105.	RAJ MANI PANDEY	HC/804	5800	3190
106.	SHRI BHAN SINGH	HC/189	5800	3190
107.	VISHNUDATTA DUBEY	HC/745	5800	3190
108.	SHIV PRASAD	HC/792	5800	3016
109.	SURYABHAN PATEL	HC726	5800	3190
110.	B.L. PANARIYA	SI	5750	3163
111.	R S PARIHAR	ASI	5700	2451
112.	TEJ BHAN SINGH	ASI	5700	3135
113.	R.D.DWIVEDI	ASI	5700	3135
114.	INDRA MANI MISHRA	ASI	5700	3135
115.	BALMIK PD. TIWARI	ASI	5700	3135
116.	R D URMALIYA	ASI	5700	3135
117.	CHANDRPAL AGNIHOTTHRI	ASI	5700	3135
118.	KUSHADWAJ PD MISHRA	HC	5700	3135
119.	BALENDRA SHEKHAR	HC/129	5700	2451
120.	TEJ BHAN SINGH	HC/838	5700	3135
121.	SIDDHA KUMAR SHARMA	ASI	5600	3080
122.	RAM BADAN SINGH	ASI	5600	3080
123.	B R PANDEY	ASI	5600	3080
124.	SHUDARSN PRASAD	ASI	5600	3080
125.	BHIM SEN SINGH	ASI	5600	3080
126.	SHRINIWAS MISHRA	HC 630	5600	3080
127.	MADAN MOHAN TIWARI	HC/850	5600	2408
128.	SHITALA PRASAD	HC/600	5600	2408
129.	NARENDRA PRASAD	HC/514	5600	3080
130.	MOHD. KHALIL KHAN	HC/204	5600	3080
131.	SHYAM N ARAYAN	HC/635	5600	3080
132.	MAN SINGH TEKAM	SI	5500	2365
133.	DASHRATH PRASAD	ASI	5500	3025
		HC/DC		
134.	L P TIWARI	RB	5500	3025

135.	GHANSHYAM SINGH	HC/436	5500	3025
136.	MEVA LAL DUBEY	HC/685	5500	2365
137.	BABU LAL TIWARI	HC/130	5500	2365
138.	KAMATA PRASAD	HC/190	5500	2365
139.	PADUM NATH SINGH	HC/221	5500	3025
140.	JAI VISHAL	HC/208	5500	3025
141.	PRADIP KUMAR SINGH	HC/377	5500	3025
142.	SURYA BHAN SAKET	HC/98	5500	3025
143.	GIRISH KUMAR	HC/857	5500	3025
144.	UMASHANKAR PANDEY	ASI	5400	2970
145.	CHANDRA NAND MISHRA	ASI	5400	2970
146.	KAMTA PRASAD SHUKLA	ASI	5400	2970
147.	LAL SINGH	ASI	5400	2970
148.	ADWARG TIGGA	ASI	5400	2970
149.	BAIJ NATH SINGH	HC/856	5400	2970
150.	MITHILESH KUMAR	PCD	5400	2970
151.	JAGAT PRATAP SINHG	HC702	5400	2970
152.	HARSHBARDHAN TIWARI	HC699	5400	2970
153.	SHITALA PRASAD	HC/345	5400	2322
154.	KALU PRASAD	HC/451	5400	2322
155.	CHANDRA MANI PRASAD	HC/424	5400	2808
156.	BABBU RAM TIWARI	HC/232	5400	2970
157.	LOK NATH DUBEY	HC/552	5400	2970
158.	JAIVIR SINGH	HC/599	5400	2970
159.	BHARAT SINGH	HC/620	5400	2970
160.	RAJENDRA PRASAD	HC/54	5400	2970
161.	ARUN KUMAR SHUKLA	HC/562	5400	2970
162.	UDAY NATH PANDEY	HC/385	5400	2970
163.	RAMESH KUMAR	HC/855	5400	2970
164.	BABU LAL DUBEY	HC/271	5400	2970
165.	NARENDRA SINGH	HC/214	5400	2970
166.	RAN BAHADUR SINHG	HC/ 544	5400	2970
167.	MRITUNJAY PRASAD	C/176	5400	2970
168.	YOG RAJ SINGH	C/797	5400	2970
169.	BRIJENDRA PRASAD	C/577	5400	2970
170.	RAJENDRA SINGH	C/126	5400	2970
171.	RAM GOPAL PANDEY	C\703	5400	2970
172.	JANARDAN PD. TRIPATHI	C/440	5400	2970
173.	SHIV PRATAP SINHG	HC906	5400	2970
174.	KUSHAL SINGH	ASI	5300	2915
175.	RAMDEO VERMA	ASI	5300	2915
176.	SUNDARLAL MAGHAE	ASI	5300	2915
177.	VISHESHAR PRASAD	HC/37	5300	2915
178.	CHANDRA DEV SINGH	HC/DS B	5300	2915
179.	RAM SAJIVAN VARMA	HC/AS SB	5300	2915
180.	SHAIL KUMAR PANDEY	HC/DS B	5300	2915
181.	BRIJ LAL PATEL	C/234	5300	2915

182.	SURSAREE PRASAD	HC 794	5300	2915
183.	SHIV PRAKASH SINGH	HC\	5300	2915
184.	KAMALAKAR PANDEY	HC/327	5300	2915
185.	BRAHMA SHANKAR SINGH	HC/570	5300	2915
186.	CHHOTA KOL	HC/31	5300	2915
187.	JAGDISH PRASAD	HC/47	5300	2915
188.	KANHAIYA LAL	HC/277	5300	2915
189.	SURYA KANT	HC/308	5300	2915
190.	SHIV BHAGVAN	HC/375	5300	2915
191.	ANGAD PRASAD	C/644	5300	2915
192.	RAM KISHOR SINGH	C/114	5300	2915
193.	TRIVENI PRASAD	C/595	5300	2915
194.	JAI RAM SINGH	C/847	5300	2915
195.	NAGENDRA SINGH	C/325	5300	2915
196.	MAHAVIR SINGH	C/511	5300	2915
197.	BHAI LAL PANDEY	C/626	5300	2915
198.	DAYA NAND SHARMA	C/628	5300	2915
199.	ANGAD PRASAD	C644	5300	2915
200.	N.P.SINGH	SI	5250	2888
201.	PRAKESH MISHRA	SI	5250	2888
202.	YOGENDRA SINGH	SI	5250	2888
203.	BUDDHU LAL	ASI	5200	2860
204.	DADDU PRASAD	ASI	5200	2860
205.	RAM SAJIVAN	C/212	5200	2860
206.	MADHOU SINGH	HC/DSB	5200	2860
207.	VISHVANATH CHOUBEY	C/DCB	5200	2860
208.	BHIMSEN	C/DSB	5200	2860
209.	RAJ BAHADUR SINGH	C\SB	5200	2860
210.	URMILA PRASAD	C/928	5200	2860
211.	RAM MILON	HC/202	5200	2860
212.	RAM NIHOR	HC/815	5200	2236
213.	HARIHAR PRASAD	HC/561	5200	2236
214.	RAJ NARAYAN	HC/312	5200	2236
215.	ABHIKARAN SINGH	HC/623-	5200	2860
216.	ABBAS KHAN	HC/315	5200	2236
217.	SABHAJIT SINGH	HC/736	5200	2236
218.	VISHESHAR SINGH	HC/125	5200	2236
219.	RAMA SHANKAR	HC/262	5200	2236
220.	BHAWANI SHANKAR	HC/159	5200	2236
221.	RAM LAL VARMA	HC/209	5200	2236
222.	HARIVANS PRASAD	HC/641	5200	2860
223.	RAJ MANI PATHAK	HC/846	5200	2860
224.	RAJ MANI MISHRA	HC/449	5200	2236
225.	VIRENDRA SINGH	HC/279	5200	2860
226.	GIRJA PRASAD	HC/575	5200	2860
227.	RAM MILAN TIWARI	HC/926	5200	2860
228.	VINDHSHWARI PRASAD	HC/6	5200	2860
229.	Thakur Prasad	HC/281	5200	2860
230.	DAN BAHADUR SINGH	HC/911	5200	2860
231.	TRIVENI SINGH	HC/280	5200	2860
232.	RAMAYANPRATAPSINGH	HC/505	5200	2860

233.	VIRENDRA KUMAR	HC/706	5200	2860
234.	SHRI NIWAS SHUKLA	HC/740	5200	2860
235.	RAM VILAS DUBEY	HC/410	5200	2860
236.	UMESH PRATAP SINGH	HC/444	5200	2860
237.	SHRI PAL SINGH	HC/618	5200	2860
238.	CHHOTE LAL	HC/80	5200	2860
239.	AJJEET SINHG	HC/873	5200	2860
240.	DEVENDRA MANI	HC/144	5200	2860
241.	HARSHVARDHAN PRASAD	HC/	5200	2236
242.	SAUKHI LAL	C/151	5200	2860
243.	JAGDISH PRASAD	C/753	5200	2860
244.	ASHARAF ALI	C/45	5200	2860
245.	ANSUIYA PRASAD	C/506	5200	2860
246.	RAJ NARAYAN DUBEY	C/639	5200	2860
247.	GANESH PRASAD	C/483	5200	2860
248.	SAMAY RAJ SINGH	C/890	5200	2860
249.	SHARDA PRASAD	C/565	5200	2860
250.	GOVIND PRASAD	C/76	5200	2860
251.	LALATA PRASAD	C/927	5200	2860
252.	RAJ BIHARI PANDEY	C/454	5200	2860
253.	RAM MILAN	C/760	5200	2860
254.	JAGDIS PRASAD	C/504	5200	2860
255.	RAJENDRA PRASAD	C/405	5200	2860
256.	LAKSHAMAN PATEL	C/782	5200	2860
257.	SHEKH NASIM	C/247	5200	2860
258.	RAM NATH PANDEY	C/659	5200	2860
259.	MANGAL PRASAD	C/83	5200	2860
260.	MANIK LAL	C/313	5200	2860
261.	GANESH PRASAD	C/591	5200	2860
262.	MOHAN LAL SHUKLA	C/246	5200	2860
263.	RAM SUNDAR	C/634	5200	2860
264.	DURYODHAN SINGH	C/14	5200	2860
265.	RAMASHRAY SHUKLA	C/417	5200	2860
266.	RAVINANDAN SINGH	C/555	5200	2860
267.	RAM LALA	C/655	5200	2860
268.	RAM PAL	C/299	5200	2860
269.	SUBHASH CHANDRA	C/167	5200	2860
270.	MAHESHPRATAPSINGH	C/322	5200	2860
271.	BAIJ NATH GOUTAM	C/448	5200	2860
272.	YADVENDRA DUBEY	C/732	5200	2860
273.	SHASHANK SHEKHAR	C/841	5200	2860
274.	ATAULLA KHAN	C/110	5200	2860
275.	VESH MANI SHARMA	C/941	5200	2860
276.	VANSHIDHAR	C/162	5200	2860
277.	LAKSHAMAN PRASAD	C/803	5200	2860
278.	NAYARAYAN SINHG	HC	5200	2860
279.	AVADH RAJ SINGH	C/152	5200	2860
280.	RAM SURAT	C/348	5200	2860
281.	ROHINEE PRASAD	HC615	5200	2860
282.	C/332 KAMTA SINHG	C/332	5200	2860
283.	SADAN SINHG MARCOM	ASI	5100	2805

284.	RAMVISHWASH VERMA	ASI	5100	2805
285.	RAM SALONE SHARMA	ASI	5100	2805
286.	VISHVANATH TIWARI	HC/532	5100	2805
287.	BADRI PRASAD	C/528	5100	2805
288.	ASHOK KUMAR VERMA	HC/DSB	5100	2805
289.	HARI NARAYAN	HC /692	5100	2193
290.	PANCH RATAN DUBEY	HC/276	5100	2193
291.	JAGAT PRATAP SINGH	HC/702	5100	2193
292.	SUKH LAL	HC/500	5100	2193
293.	RAMENDRA SHUKLA	HC/549	5100	2193
294.	TILAK RAJ SINGH	HC/662	5100	2193
295.	RAM VISHWAS	HC/633	5100	2193
296.	RAM KARAN	HC/781	5100	2805
297.	PUSPENDRA SINGH	HC\ 652	5100	2805
298.	LAL MANI SINGH	HC/622	5100	2805
299.	DEVI DAYAL	HC/143	5100	2805
300.	VISHNU DEV DUBEY	HC/245	5100	2805
301.	RAM KUMAR	HC/689	5100	2805
302.	RAGHUVIR SINGH	HC/550	5100	2805
303.	RAM LAKHAN	HC100	5100	2805
304.	TRIYOGI NARAYAN	HC/172	5100	2805
305.	RAMESH KUMAR	HC/297	5100	2193
306.	CHAKRADHAR SHARMA	HC/394	5100	2193
307.	GORAKH NATH SINGH	C/671	5100	2805
308.	RAJENDRA PRASAD	C/557	5100	2193
309.	CHHOTE LAL	C/508	5100	2805
310.	BALA PRASAD DUBEY	C/596	5100	2805
311.	RAM CHANDRA	C/730	5100	2805
312.	KAMALAKAR SINGH	C/625	5100	2805
313.	SURYA PRATAP SINGH	C/220	5100	2805
314.	RAJESH SHRIVASTAV	C/223	5100	2805
315.	JAGANNATH PRASAD	C/109	5100	2805
316.	KAPIL MUNI	C/934	5100	2805
317.	MAN KAMANA PRASAD	C/108	5100	2805
318.	PRAMOD SINGH	HC	5100	2805
319.	JAGDISH PRASAD	HC	5100	2805
320.	RAVI SHANKAR PANDEY	S.I.	5000	2750
321.	NAGESHWAR PATEL	HC(DCB)	5000	2750
322.	KARAN SINHG	CONS.	5000	2750
323.	YOGENDRA PANDEY	C/275	5000	2750
324.	INDRA DEV SINGH	HC/895	5000	2150
325.	SURENDRA SINGH	HC/617	5000	2150
326.	BRIJENDRA SINGH	HC/779	5000	2150
327.	ANURUDH PRASAD	HC/283	5000	2150
328.	BALENDRA PRASAD	HC/872	5000	2750
329.	CHANDRA BHUSHAN	HC/116	5000	2150
330.	RAJ NARAYAN SINGH	HC/674	5000	2750
331.	MAN MOHAN TRIPATHI	HC/288	5000	2750
332.	NANDI SINGH	HC/924	5000	2750
333.	JAHIR KHAN	HC/89	5000	2050
334.	SURSARI PRASAD	HC/264	5000	2750

335.	RAM SHIROMANI	HC/148	5000	2750
336.	SANTOSH KHARE	HC/216	5000	2750
337.	JAGANNATH SAHU	HC/831	5000	2750
338.	SUNDAR LAL	HC/597	5000	2750
339.	VIDYADHAR	HC/364	5000	2750
340.	NARBADA SINGH	C/255	5000	2150
341.	BHAIYA LAL	C/589	5000	2150
342.	RAM SUSHIL	C/334	5000	2150
343.	MATHURA PRASAD	C/170	5000	2150
344.	INDRA LAL	C/260	5000	2150
345.	JAGANNATH PRASAD	C/642	5000	2150
346.	VISHRAM PRASAD	C/131	5000	2150
347.	KUNJ BIHARI	C/475	5000	2750
348.	RAM BHAN SINGH	C/553	5000	2600
349.	RAM GANESH	C/187	5000	2150
350.	RAKESH KUMAR	C/61	5000	2750
351.	SHER KHAN	C/342	5000	2750
352.	HEERA MANI SINGH	C/606	5000	2750
353.	BHAIYA LAL	C/192	5000	2750
354.	NIRANTAR SINGH	C/180	5000	2750
355.	JAGAT DE V SINGH	C/711	5000	2750
356.	SANSKRIT PRASAD	C/--	5000	2750
357.	RAM SWARUP	C/839	5000	2750
358.	RAM PRASAD	C/601	5000	2750
359.	NARENDRA PRASAD	C/133	5000	2750
360.	SUKHINAND SINGH	C/343	5000	2750
361.	SHAMBHU PRASAD	C/787	5000	2750
362.	NAND KISHOR	C/478	5000	2750
363.	SATYA BHAN SONKAR	C/157	5000	2750
364.	RAVINANDAN SINGH	C/168	5000	2750
365.	BIHARI LAL	C/346	5000	2750
366.	DADAN PRASAD	C/77	5000	2750
367.	KESHARI PRASAD	C/648	5000	2750
368.	RAMASHRAY	C/18	5000	2750
369.	NARESH SINGH	C/439	5000	2750
370.	PARKHAT SINGH	C/910	5000	2750
371.	RAMESH PRASAD DUBEY	C/437	5000	2750
372.	BUDDHA NARAYAN	C/661	5000	2150
373.	SURESH PRASAD MISHRA	C/12	5000	2750
374.	HC53/ SANTOS TRAPHI	HC/53	5000	2750
375.	RAJMANI PATEL	HC 239	5000	2750
376.	SOM KUMAREE SINHG	ASI	4900	2695
377.	TRİYUGEE NARAYAN	HC122	4900	2695
378.	LAXMEE NARYAN PAYASE	HC 695	4900	2695
379.	DIDARUDDIN	HC/707	4900	2107
380.	BHUVAN PRASAD	HC/250	4900	2695
381.	MAHADEV PRASAD	HC/198	4900	2695
382.	CHANDRA BHAN DUBEY	HC/876	4900	2695
383.	PARSOTTAM PRASAD	HC/200	4900	2695
384.	SHAMSHUDDIN	HC/536	4900	2695
385.	DEV LAL VARMA	HC/867	4900	2695

386.	RAM SIYA	HC/357	4900	2695
387.	SHAMBHU PRASAD	C/842	4900	2107
388.	SHYAM BIHARI	C/742	4900	2107
389.	SAMAY LAL	C/38	4900	2695
390.	RAJENDRA SINGH	C/60	4900	2695
391.	SITA PRASAD	C/667	4900	2695
392.	SHANKAR PRASAD	C/19	4900	2695
393.	GOVARDHAN PRASAD	C/386	4900	2695
394.	SHANIPRATAP SINGH	C/29	4900	2695
395.	VIDYA KANT	C/311	4900	2695
396.	SUBHASHCHANDRAMISHR			
A		C/563	4900	2695
397.	RAGHUNANDAN SINGH	C/301	4900	2695
398.	BAIJ NATH SHARMA	C/530	4900	2695
399.	ATRIMUNI TIWARI	C/546	4900	2695
400.	BUDDHSEN	C/526	4900	2695
401.	HARI NARAYAN PANDEY	HC/52	4900	2695
402.	ASOK KUMAR	C/231	4900	2695
403.	RAJNARAYAN MISHRA	C/79	4900	2695
404.	S.K-GUPTA	SI	4875	2681
405.	INDRAJ SINHG	ASI	4800	2640
406.	SATAYA NARAYAN	CONS	4800	2640
407.	CHANDRIKA PRASAD	HC/ASSB	4800	2640
408.	RAM BHAN SINGH	HC/ASSB	4800	2640
409.	INDRAJIT SINGH	C/155	4800	2640
410.	RAM SUMIRAN DUBEY	HC/637	4800	2064
411.	KAMALAKAR SINGH	HC/762	4800	2064
412.	RADHIKA PRASAD	HC/621	4800	2064
413.	RAJ MANI PATEL	HC/239	4800	2496
414.	MAHENDRA SINGH	HC/775	4800	2640
415.	JAI LAL VARMA	HC/314	4800	2064
416.	SANTOSH KUMAR	HC/53	4800	2064
417.	MAHENDRA KUMAR	HC/350	4800	2640
418.	KEDAR NATH MISHRA	HC/698	4800	2640
419.	MOTI LAL	HC/717	4800	2640
420.	GAGANDRA SNG PARIHAR	HC-395	4800	2640
421.	CHHEDI LAL	C/278	4800	2640
422.	DURGA SINGH	C/712	4800	2064
423.	HARI SHANKAR	C/585	4800	2064
424.	CHHOTE LAL	C/619	4800	2064
425.	GENDA LAL AWASTHI	C/709	4800	2064
426.	VANSPATI PRASAD	C/657	4800	2064
427.	RAJA RAM SHUKLA	C/490	4800	2064
428.	MOTI LAL	C/128	4800	2064
429.	RAM NARAYAN SINGH	C/624	4800	2064
430.	BAIDYA NATH	C/409	4800	2640
431.	SHESH MANI SINGH	C/39	4800	2064
432.	ARJUN PRASAD	C/35	4800	2064
433.	BALMIK PRASAD	C/829	4800	2064
434.	PANCHAM LAL	C/02	4800	2064
435.	RAM SURAT	C/115	4800	2064

436.	YADUNATH PRASAD	C/62	4800	2064
437.	SUDHIR KUMAR SINGH	C/197	4800	2064
438.	HEERA LAL	C/773	4800	2640
439.	HARIHAR PRASAD	C/750	4800	2064
440.	RAM SAGAR	C/390	4800	2640
441.	KRISHNA MANI	C/136	4800	2064
442.	MOHD. USUF	C/469	4800	2064
443.	RAM BALAK	C/541	4800	2640
444.	RAJA RAM	C/218	4800	2640
445.	KAPTAN BAHADUR	C/646	4800	2640
446.	SUBASH CHANDRA	C/244	4800	2496
447.	ROSHAN LAL	C/137	4800	2496
448.	SADHOU PRASAD	C/482	4800	2640
449.	RAM LOCHAN	C/719	4800	2640
450.	SAMPAT KUMAR	C/809	4800	2640
451.	RAJIV LOCHAN	C/610	4800	2640
452.	PARASU RAM	C/349	4800	2640
453.	CHANDA SINGH	LC/748	4800	2640
454.	SHIV DEV SHARMA	C/933	4800	2640
455.	VIDYA KANT	C/810	4800	2640
456.	JWALA PRASAD	C-769	4800	2640
457.	UMENDRA KUMAR	C/309	4800	2640
458.	SHIV MURAT SEN	C/682	4800	2640
459.	DINESH KUMAR	C/400	4800	2640
460.	JITENDRA SINGH	C/844	4800	2640
461.	ATUL KUMAR	C/150	4800	2640
462.	RAMKHALAWAN	C/76100	4800	2640
463.	MAN VISHRAM	C/99	4800	2640
464.	SHIV RAM SINGH	C/	4800	2640
465.	BAIDYA NATH SHASTRI	C/282	4800	2640
466.	RAM SAJIVAN	C/720	4800	2640
467.	BHAGVAT PRASAD	C/527	4800	2640
468.	GOPIKA PRASAD	C/784	4800	2640
469.	JAGANNATH PRASAD	C/643	4800	2640
470.	MAHENDRA SHUKLA	C/70	4800	2640
471.	CHANDRA SHEKHAR	C/336	4800	2640
472.	ASHOK KUMAR	C/318	4800	2640
473.	NARENDRA SINGH	C/486	4800	2640
474.	MOTI LAL	C/758	4800	2640
475.	GIRISH KUMAR	C/230	4800	2640
476.	BHAGVAT PRASAD	C/771	4800	2640
477.	VINAYAK PRASAD	C/802	4800	2640
478.	SURSARI PRASAD	C/235	4800	2640
479.	ABID KHAN	C/64	4800	2640
480.	RAJEEV LOCHAN SINGH	C368	4800	2640
481.	RAM DHANI	C/34	4800	2640
482.	RAM NIHOR	C/90	4800	2640
483.	RAM KUMAR SINGH	C/729	4800	2640
484.	RAMANUJ TIWARI	C/295	4800	2064
485.	NARVADA PRASAD	C/705	4800	2064
486.	C/BHOLA PRASAD	C/868	4800	2640

487.	UGRABHAN SINHGPADEL	HC	4800	2640
488.	BRIJ RAJ SINHG	SI	4750	2613
489.	SURSARI PRASAD	C/428	4700	2585
490.	VIR BAHADUR SINGH	C/DSB	4700	2585
491.	JANARDAN PD.	CONS.	4700	2585
492.	RAMA KANT PATHAK	C/492	4700	2585
493.	BALENDRA SINGH	HC/206	4700	2021
494.	RAM NIRANJAN VARMA	HC/146	4700	2021
495.	LALAN SINGH	HC/739	4700	2021
496.	BHAIYA LAL PATEL	HC/898	4700	2021
497.	SADHU LAL VARMA	HC/756	4700	2021
498.	TRİYOGI PRASAD	HC/122	4700	2021
499.	RAM NARAYAN	HC/721	4700	2585
500.	BRIJ NANDAN PRASAD	HC/722	4700	2585
501.	GANGA SINGH	HC/548	4700	2585
502.	RAJ NARAYAN	C/79	4700	2350
503.	RAM DARAS	C/442	4700	2021
504.	ARUN KUMAR	C/107	4700	2585
505.	HARIHAR PRASAD	C/181	4700	2444
506.	BUDDHASEN SINGH	C/526	4700	2021
507.	MAHENDRA KUMAR	C/820	4700	2585
508.	CHHEDI LAL	C/823	4700	2444
509.	CHANDRA BALI SINGH	C/82	4700	2021
510.	SURENDRA MANI	C/95	4700	2585
511.	JUGUL KISHOR	C/163	4700	2585
512.	GANGA PRASAD	C/103	4700	2585
513.	PRABHU NATH PRASAD	C/813	4700	2585
514.	RAJ NATH SHUKLA	C/374	4700	2444
515.	SHIV BADAN	C/267	4700	2585
516.	RAJESHHWAR PRASAD	C/467	4700	2585
517.	MAKSUDAN PRASAD	C/818	4700	2444
518.	BRIJ MOHAN PRASAD	C/858	4700	2585
519.	MADHOU PRASAD	C/445	4700	2585
520.	DINESH TIWARI	C/94	4700	2585
521.	RAM SWARUP	C/355	4700	2585
522.	KRISNA CHARAN	C/149	4700	2585
523.	SATYA NARAYAN	C/468	4700	2585
524.	VISHNU GOPAL	C/768	4700	2585
525.	ASHWINI KUMAR	C/735	4700	2585
526.	RAJIV LOCHAN	C/878	4700	2585
527.	SHIV SAGAR SINGH	C/434	4700	2585
528.	ABHILAS PRASAD	C/225	4700	2585
529.	GANGA SINGH BAGHEE	C/789	4700	2585
530.	RAM LAKHAN	C/767	4700	2585
531.	RAM SAJIVAN	C/161	4700	2585
532.	MUNINDRA KUMAR	C/765	4700	2585
533.	JUMMAN KHAN	C/259	4700	2585
534.	SHIVENDRA SINGH	C/749	4700	2585
535.	VISHWA NATH PRASAD	C/808	4700	2585
536.	RAMAVTAR RAWAT	C/883	4700	2585
537.	RAGHUVANS PRASAD	C/352	4700	2585

538.	NARVADA PRASAD	C/284	4700	2585
539.	DASHARATH SINGH	C/523	4700	2585
540.	BRIJENDRA SINGH	C/48	4700	2585
541.	RADHIKA PRASAD	C/833	4700	2585
542.	ABDUL HANIF	C/93	4700	2585
543.	RAJENDRA PD. DUBEY	C/456	4700	2585
544.	GAJENDRA SINGH	C/227	4700	2585
545.	SUKH NIDHAN	C/495	4700	2585
546.	KAMTA SINGH	C/627	4700	2585
547.	DEVENDRA PRATAP	C/798	4700	2585
548.	RAM HIT SAKET	C/716	4700	2585
549.	SURENDRA KUMAR	C/106	4700	2585
550.	KRISHNA KUMAR	C/287	4700	2585
551.	UDHOU PRATAP SINGH	C/499	4700	2585
552.	UMESH PRASAD SHUKLA	C/404	4700	2585
553.	KOOSALENDRA SUKLA	C/825	4700	2585
554.	BAGWAN DAS MISHRA	C-265	4700	2585
555.	KAMAL KISHOR	C533	4700	2585
556.	DINESH KUMAR	C238	4700	2585
557.	LALLU LAL	C/564	4700	2585
558.	RAJ KARAN SINGH	C/153	4700	2585
559.	ASHOK KUMAR PANDEY	C/376	4700	2585
560.	KAMLESHWAR SINGH	C/751	4700	2585
561.	SHAMBHU PRASAD	C/117	4700	2585
562.	BAIJ NATH SINGH	C/01	4700	2021
563.	MITHILA PRASAD	C/551	4700	2585
564.	RAMNIHOR	C 399	4700	2585
565.	RAMRUCHI SAKET	C/678	4700	2585
566.	RAJ BAHOR DWIVEDI	C/554	4700	2585
567.	SHESHMANI PRAJAPATI	C/363	4700	2585
568.	TEERATH PRASAD	CONS	4700	2585
569.	ARUN KUMAR PANDEY	C-107	4700	2585
570.	ASHOK KUMAR	C/224	4620	2541
571.	RAJ KUMAR	C/460	4620	2541
572.	JWALA PRASAD	C/769	4620	1987
573.	PRAMOD SINGH	HC/830	4620	2402
574.	RAM UJAGAR	HC/592	4620	1987
575.	LAKSHMI KANT	HC/353	4620	1987
576.	ASHAD KHAN	HC/300	4620	2541
577.	RAM BHILASH	HC/258	4620	2541
578.	RAJ BAHOR	C/455	4620	1987
579.	SHILADHWAJ SINGH	C/183	4620	1987
580.	BALMIK PRASAD	C/286	4620	1987
581.	GIRISH KUMAR	C/261	4620	2541
582.	RAM CHANDRA	C/171	4620	1987
583.	NAGENDRA MANI	C/738	4620	2402
584.	RAJ MANI	C/26	4620	2402
585.	VISHWA NATH	C/683	4620	1987
586.	DINESH PRASAD	C/819	4620	1987
587.	RAM AJOR	C/331	4620	1987
588.	JAWAHAR LAL	C/715	4620	1987

589.	RAM SUSHIL	C/67	4620	1987
590.	ASHOK KUMAR	C/366	4620	2541
591.	RAJ RAKHAN	C/795	4620	1987
592.	DWARIKA PRASAD	C/201	4620	2402
593.	HIRA MANI SINGH	C/263	4620	2541
594.	RAM LOCHAN	C/594	4620	2541
595.	AMAR NATH	C/471	4620	2541
596.	KEDAR PRASAD	C/44	4620	2541
597.	SHIV KUMAR	C/329	4620	2541
598.	RAJENDRA PD. TIWARI	C/87	4620	2541
599.	RAJENDRA SINGH	C/97	4620	2541
600.	ONKAR PRASAD	C/616	4620	2541
601.	DAYA SHANKAR	C/179	4620	2541
602.	RAJENDRA PRASAD	C/215	4620	2541
603.	DADOL KOL	C/242	4620	2541
604.	GAYA PRASAD	C/880	4620	2541
605.	DHANA PRASAD	C/567	4620	2541
606.	UMA KANT SINGH	C/426	4620	2541
607.	RAM JIYAVAN	C/864	4620	2541
608.	RAM KISHAN	C/874	4620	2541
609.	KAMLESWAR SINGH	C/378	4620	2541
610.	NAGENDRA PRATAP	C/558	4620	2541
611.	SHAMBHU PRASAD	C/817	4620	2541
612.	NAGESH PRASD SHUKLA	C\ 145	4620	2541
613.	RAJEDRA KAROSIYA	C/07	4620	2541
614.	RAMBACHAN TRIPATHI	HC 29	4620	2541
615.	ROHINI PRASAD	C/916	4620	2541
616.	RAMBIHAREE KHERE	C	4620	2541
617.	HARISHANKER	C	4620	2541
618.	RAVINANDAN PRASAD	C/274	4600	2530
619.	BABU LAL SONDHIIYA	C/DSB	4590	2525
620.	RAJ BAHADUR PANDEY	HC/124	4590	2525
621.	TULASI DAS	C/177	4590	1974
622.	SHYAM LAL	C/395	4590	1974
623.	RAM SALONE PATEL	C/794	4590	1974
624.	OM PRAKASH	C/672	4590	2387
625.	RAM BHUVAN	C/249	4590	1974
626.	RAJESHWAR PRASAD	C/43	4590	1974
627.	BHORAI RAM	C/08	4590	1974
628.	SHIV NATH PRASAD	C/724	4590	1974
629.	SHIV NATH PRASAD	C/354	4590	2525
630.	BRAJ BHUSHAN	C/23	4590	2525
631.	KRISHNA PRASAD	C/470	4590	2525
632.	RAM RASILE	C/793	4590	2525
633.	NACHKAU RAM	C/145	4590	1974
634.	GAYA PRASAD	C/55	4590	2525
635.	RAJ KUMAR	C/10	4590	2525
636.	AMAR JIT MAJHI	C/360	4590	2525
637.	JAGDEESH PRASAD	C\431	4590	2525
638.	SAMPATI KUMAR MISHRA	C746	4590	2525
639.	GANESH PRASAD	C/477	4560	2508

640.	ARUN KUMAR	C/886	4540	2497
641.	BAIKUNTH PRASAD	HC/194	4540	2497
642.	RAVENDRA PRATAP	C/658	4540	1952
643.	MUL CHARAN	C/785	4540	1952
644.	HANUMANT SINGH	C/870	4540	1952
645.	AMRIT LAL	C/92	4540	1952
646.	HEERA LAL	C/806	4540	1952
647.	LAKSHAMAN PRASAD	C/766	4540	1952
648.	JAI RAM DAS	C/891	4540	1952
649.	LOK RAJ SINGH	C/774	4540	1952
650.	DEVENDRA KUMAR	C/520	4540	1952
651.	GANESH PRASAD	C/814	4540	1952
652.	BHAGWAN DIN	C/778	4540	1952
653.	VANS PATI PRASAD	C/889	4540	2497
654.	BHARAT LAL	C/788	4540	2361
655.	MAHENDRA KUMAR	C/752	4540	1952
656.	GANGA PRASAD	C/09	4540	1952
657.	LAKSHMI NARAYAN	C/101	4540	2497
658.	MANI LAL YADAV	C/433	4540	1952
659.	RADHE SHYAM	C/770	4540	1952
660.	BUDDHSEN	C/660	4540	2497
661.	NAND KUMAR	C/791	4540	1952
662.	KALYAN CHANDRA	C/701	4540	1952
663.	TULASI DAS	C/811	4540	1952
664.	KAUSHLENDRA PRASAD	C/825	4540	1952
665.	DEVRAJ KOL	C/365	4540	1952
666.	MAN SUKH LAL	C/710	4540	1952
667.	LILA MANI SINGH	C/407	4540	1952
668.	RAMA KANT	C/22	4540	2497
669.	KAMLESHWAR PRASAD	C/700	4540	1952
670.	TRIVENI PRASAD	C/253	4540	2497
671.	RAMAUTAR	C/518	4540	2497
672.	MOLAI RAM	C/211	4540	2497
673.	DARBARI LAL	C/272	4540	2497
674.	RAM DAS	C/173	4540	2497
675.	ANJANI PRASAD	C/266	4540	1952
676.	ANIL KUMAR	C/691	4540	2497
677.	BRIJENDRA KUMAR	C/744	4540	2497
678.	RAMESH SINGH	C/888	4540	2497
679.	RAM SIROMANI	C/865	4540	2497
680.	SITA RAM	C/579	4540	2497
681.	MAJMOON KHAN	C/4	4540	2497
682.	ARUN KUMAR	C/356	4540	2497
683.	CHAITANYA KUMAR	C/396	4540	2497
684.	RAJ MANI SINGH	C/134	4540	2497
685.	ASHOK KUMAR TIWARI	C/834	4540	2497
686.	BRIJENDRA SINGH	C/233	4540	2497
687.	NARENDRA PRASAD	C/406	4540	2497
688.	VIDYA DHAR	C/894	4540	2497
689.	GANGA PRASAD	C/421	4540	2497
690.	KAMLESH RATHI	C/893	4540	2497

691.	JAGAT NARAYAN	C/852	4540	2497
692.	RAM KUSHAL	C/747	4540	2497
693.	DADAN SINGH	C/86	4540	2497
694.	RAM KRISHNA	C/887	4540	2497
695.	ABHAY KUMAR SINGH	C/252	4540	2497
696.	ARUNENDRA KU. SHUKLA	C\	4540	2497
697.	RAM BHIHAREE	C	4540	2497
698.	KUSHAL RAJ SINHG	C	4540	2497
699.	CHANDRA MANI	C/351	4540	1952
700.	RAJENDRA PRASAD	C/631	4540	1952
701.	PARMESHWAR DIN	C/776	4540	1952
702.	RAMSUJAN SINHG	C	4510	2481
703.	UMA KANT	C/538	4510	1939
704.	KAMALBHAN SINGH	C/976	4510	1939
705.	MITRA NATH MISHRA	C/459	4510	2481
706.	NANHUU PRASAD	C363	4510	2481
707.	MAHENDRA SINHG	C690	4510	2481
708.	RAJA PRASAD	C/638	4510	1714
709.	RAM KUMAR	C/805	4510	2345
710.	RAJ KUMAR MISHRA	SI	4500	2475
711.	PRADEEP WALTER	PSI	4500	1935
712.	VANSHVARDHAN	C/371	4460	2453
713.	UMAKANT MISHRA	C/ASSB	4460	2453
714.	RAVINDRA DWIVEDI	HC/525	4460	1918
715.	MRIDULA AVASTHI	LHC/423	4460	2453
716.	SUSHILA DEVI	HC/807	4460	2453
717.	BRIJ LAL	C/191	4460	1918
718.	RAM SIROMANI	C/359	4460	1918
719.	DESH MUKH PANDEY	C/879	4460	1918
720.	RAM VIRANJAN	C/651	4460	1918
721.	ABDUL AHMAD	C/228	4460	1918
722.	MATHURA PRASAD	C/91	4460	1918
723.	PAVAN KUMAR	C/243	4460	1918
724.	KALLU KOL	C/863	4460	1918
725.	ANNAPURNA PRASAD	C/68	4460	1918
726.	RAM BIHARI	C/790	4460	1918
727.	AMBIKA PRASAD	C/670	4460	1918
728.	DEVENDRA PRASAD	C/344	4460	1918
729.	KANAIYA LAL	C/33	4460	2453
730.	RAN BAHADUR SINGH	C/112	4460	2453
731.	RAJESH KUMAR TIWARI	C/517	4460	2453
732.	SARLA SHARMA	C/213	4460	2453
733.	JHALAK NARAYAN	C/368	4460	2453
734.	RAJESH KUMAR	C/572	4460	2453
735.	SHRI NIWAS TIWARI	C/370	4460	2453
736.	MUNI RAJ SINGH	C/489	4460	2453
737.	LALTA PRASAD	C/827	4460	2453
738.	DULARE PRASAD	C/733	4460	2453
739.	GIRIJA PRASAD	C/237	4460	2453
740.	URMILA SINGH	LC/547	4460	2453
741.	DIPENDRA SINGH	C/17	4460	2453

742.	AVDHESH SINGH	C/46	4460	2453
743.	BHAGVAT SINGH	C/452	4460	2453
744.	HARI LAL	C/472	4460	2453
745.	TRIVENI PRASAD	C/338	4460	2453
746.	NAGENDRA SINGH	C/203	4460	2453
747.	PUSHPARAJ TIWARI	C/123	4460	2453
748.	MANAE KHAN	C/537	4460	2453
749.	SALIK RAM	C/182	4460	2453
750.	RAJENDRA SINGH	C/812	4460	2453
751.	NARAYAN SINHG	C634	4460	2453
752.	SURESH KUMAR PANDEY	C674	4460	2453
753.	SALEEM KHAN	C308	4460	2453
754.	SURESH KUMAR	C/69	4460	1918
755.	RAM NARESH SAKET	HC	4460	2453
756.	PUSPENDRA KUMAR	C/254	4460	2453
757.	GANESH SINGH	C571	4430	2437
758.	SUKH LAL	C/656	4430	1905
759.	DINESH PRASAD	C/516	4430	1905
760.	RAJENDRA PRASAD	C/335	4430	2437
761.	TILAK SINGH	C/677	4430	2437
762.	RAMADHAR SHRMA	C/403	4430	2437
763.	PROMOD SINHG	HC\830	4380	2409
764.	UMA KANT	C/316	4380	1883
765.	KOLAI RAM	C/822	4380	1883
766.	BHARAT LAL	C/57	4380	1883
767.	RAM DINESH	C/476	4380	1883
768.	DAYA SHANKAR	C/290	4380	2409
769.	DADWA RAWAT	C/63	4380	2409
770.	UMA SHANKAR	C/578	4380	2409
771.	RAM BHAN SINGH	C/141	4380	2409
772.	HET LAL	C/862	4380	2409
773.	RAM DAS	C/464	4380	2409
774.	CHHOTE LAL	C/466	4380	2409
775.	MAHENDRA KUMAR	C/102	4380	2409
776.	BHAIYA LAL	C/32	4380	2409
777.	RAMESH SINGH	C/836	4380	2409
778.	HEMANT KUMAR	C/392	4380	2409
779.	KIRAN GUPTA	LC/85	4380	2409
780.	AVDHESH PRASAD	C/49	4380	2409
781.	RAM NARAYAN	C/849	4380	2409
782.	RAJKUMAR SINHG	C/367	4380	2409
783.	AVADH SHARAN	C/59	4380	2409
784.	SURSARI PRASAD	C/195	4380	2409
785.	BABU LAL SEN	C/169	4380	2409
786.	JAGPATI KOL	C/72	4380	1883
787.	BHUPENDRA SINGH	C/869	4380	1883
788.	JAI PRAKASH SINGH	C/543	4360	2398
789.	RAM MOL TIWARI	ASI	4350	2393
790.	MAENDRA KUMAR	C/347	4350	1871
791.	RAM GOPAL	C/604	4350	2393
792.	RAM MILAN	C/415	4350	2393

793.	MANE KHAN	C/537	4300	1849
794.	B K TIWARI	ASI(M)	4300	1849
795.	CHURAMANI	HC/728	4300	1849
796.	RAMANUJ BAGAREE	C	4300	2365
797.	RAM MANI TIWARI	C/457	4300	1849
798.	TIRATH PRASAD	C/688	4300	1849
799.	SIYA SHARAN	C/512	4300	1849
800.	RAM SIYA	C/861	4300	1849
801.	CHANDRA SHEKHAR	C/340	4300	2365
802.	RAMAGOVIND SINGH	C/940	4300	1849
803.	RAM LAKHAN	C/447	4300	2365
804.	ARUN KANT	C/513	4300	1849
805.	RAMAYAN PRASAD	C/441	4300	1849
806.	RAM JEE PANDEY	C/71	4300	2365
807.	TRIYUGI NARAYAN	C/40	4300	2365
808.	SANTOSH KUMAR	C/636	4300	2365
809.	MOHD. NAFIS	C/609	4300	2365
810.	BRIJ BHAN SINGH	C/693	4300	1849
811.	AKHAND PRATAP SINGH	C/328	4300	2365
812.	VIRENDRA SINGH	C/925	4300	2365
813.	UMESH KUMAR	C/598	4300	2365
814.	KAUSILYA DEVI	LC/381	4300	2365
815.	ANJU KHAN	LC/446	4300	2365
816.	USHA KOL	LC/394	4300	2365
817.	SUSHIL KUMAR	C/251	4300	2365
818.	ANANT VIJAY SINGH	C/418	4300	2365
819.	TARUNENDRA TIWARI	C/205	4300	2365
820.	NAND GOPAL	C/463	4220	1815
821.	ARUNENDRA SINGH	C/174	4220	1815
822.	SIYA RAM	C/372	4220	1815
823.	RAM RATAN VARMA	C/892	4220	2321
824.	RAMAGOVIND SINGH	C940	4220	2321
825.	RAJESH TIWARI	C/713	4190	1802
826.	SHUSHMA TIWARI	MC\294	4190	2305
827.	UMESH KUMAR PANDEY	C/303	4140	2277
828.	SUSHIL KUMAR	C/51	4140	1780
829.	RAM GOPAL	C/20	4140	1780
830.	VIKAT KUMAR SINGH	C/640	4140	1780
831.	YAZLAL	C-425	4140	2277
832.	RAM SURESH	C/529	4140	2277
833.	NATI LAL	C/908	4140	2277
834.	RAJESH KUMAR	C/330	4110	2261
835.	MAN BARAN PRASAD	C/339	4110	1767
836.	OM PRAKASH	C/383	4110	2261
837.	BHAGVAN DIN	C/835	4110	2261
838.	ISHWAREE PRASAD	C\	4110	2261
839.	RAM SALONE MISHRA	C/ DSB	4060	2233
840.	PARMATMA SARAN TRIPT	HC/757	4060	2233
841.	MAHANDRA MISHRA	HC/113	4060	2233
842.	SURESH KUMAR	C/294	4060	1746
843.	RAM SIROMANI	C/156	4060	1746

844.	RAM VIDHATA	C/84	4060	2030
845.	MUNSI LAL	C/645	4060	1746
846.	SUKH LAL	C/574	4060	2233
847.	PARMESHWARDIN	C/669	4060	2233
848.	RAJESH KUMAR	C/485	4060	2233
849.	SUKH LAL MAJHI	C/853	4060	2233
850.	CHANDRA MANI	C/502	4060	2233
851.	NAGENDRA MISHRA	C/73	4060	2233
852.	RAJESH KUMAR	C/821	4060	2233
853.	KRISHNA KANT	C/603	4060	2233
854.	SHYAM LAL	C/229	4060	2233
855.	RAJENDRA PRASAD	C/16	4060	2233
856.	DWARIKA PRASAD	C/56	4060	2233
857.	SUNDAR LAL	C/905	4060	2233
858.	SNEHLATA	LC/734	4060	2233
859.	PRAKASH NARAYAN	C/412	4060	2233
860.	AMRIT LAL	C/907	4060	2233
861.	NAND LAL	C/491	4060	2233
862.	SHANTA PRASAD	C/632	4060	2233
863.	SHATRUSUDAN PRASAD	C/686	4060	2233
864.	BAHADUR PRASAD	C/922	4060	2233
865.	INDRA PAL	C/900	4060	2233
866.	LAV KUSH PRASAD	C/139	4060	2233
867.	CHANDRA PAL SINGH	C/36	4060	2233
868.	PURUSHOTTAM SHARMA	C/89	4060	2233
869.	NARAYAN SINHG BAGRI	C/291	4060	2233
870.	VERENDRA TIWARI	C/164	4060	2233
871.	AJIJUNNISHA	MC221	4060	2233
872.	RAJESH PANDEY	HC	4060	2233
873.	ACCHELAL	C/435	4060	2233
874.	CHINDRKA PRASAD	C/188	4060	2233
875.	SWATANTRA KOL	C/901	4030	2217
876.	KALLU KOL	C/393	4030	2217
877.	RAM RAJ CHOUBEY	C/256	4030	1733
878.	MUDRIKA PRASAD	C/358	4030	2217
879.	MOUJUD KHAN	C/524	4030	2217
880.	SHARDA PRASAD	C/904	4030	2217
881.	SUDHA SINGH	LC/219	4030	2217
882.	VANSPATI KOL	C/236	4030	2217
883.	DEVENDRA VERMA	C/875	4030	2217
884.	UMASHANKER VISKARMA	HC	3980	2189
885.	AJAYA SINGH PARIHAR	HC898	3980	2189
886.	JITENDRA PRASAD	C/741	3980	1711
887.	RAKESH SINHG	C/568	3980	2189
888.	PHOOL CHANDRA	C/772	3980	2189
889.	GOKARN PD. DWIVEDI	C/196	3980	2189
890.	RAM SAKHA SAKET	C/920	3980	2189
891.	SHATRUGHAN PRASAD	C/611	3980	2189
892.	RAM NIWAS	C/914	3980	2189
893.	OM PRAKASH	C/341	3980	2189
894.	UPENDRA SINGH	C/848	3980	2189

895.	SHIV NARESH	C/411	3980	2189
896.	MEVA LAL	C/389	3980	2189
897.	VINOD KUMAR	C/480	3980	2189
898.	BABU LAL	C/422	3980	2189
899.	RUKMANI DEVI	LC/501	3980	2189
900.	BAIJ NATH PRASAD	C/104	3980	2189
901.	GOPI NATH	C/860	3980	2189
902.	SURYA BALI SINGH	C/915	3980	2189
903.	SUKH DAYAK PRASAD	C/665	3980	2189
904.	MAHENDRA PRASAD	C/684	3980	2189
905.	KUNJ MANI	C/391	3980	2189
906.	BRIJENDRA KUMAR	C/885	3980	2189
907.	RAMNIVAS BAGREE	C912	3980	2189
908.	BADREE PRASAD	C543	3980	2189
909.	DEORAJ SINGH PARIHAR	HC\629	3980	2189
910.	DHANESH PANDEY	HC	3980	2189
911.	SURENDRA SINGH	C/413	3975	2186
912.	SHIV SHARAN	C/650	3950	2173
913.	ABHAY RAJ SINGH	C/937	3950	2173
914.	ROHINI PRASAD	C/899	3950	2173
915.	SHISHUPAL SINGH	C/210	3950	1699
916.	BHAIYA LAL	C/780	3950	2173
917.	RAJI LAL	C/142	3950	2173
918.	LAXMEE PRASAD	C 497	3950	2173
919.	RAM BHAJAN	C/450	3950	2173
920.	GAYA PRASAD	C/296	3950	2173
921.	SHESH PAL KOL	C/923	3950	2173
922.	SURYA MANI SINGH	C/696	3950	2173
923.	VIJAY SHANKAR	C/917	3950	2173
924.	ABHAY RAJ SINGH	C/921	3950	2173
925.	MARTAND SINGH	C/679	3950	2173
926.	DIVAKAR SINGH	C/58	3950	2173
927.	YAKJYA LAL	C/425	3900	1677
928.	SAMAY LAL	C/545	3900	1677
929.	BHAIYA LAL	C/160	3900	1677
930.	CHANDRIKA PRASAD	C/188	3900	1677
931.	ACHCHHE LAL	C/435	3900	2028
932.	SAMAY LAL	C/764	3900	2145
933.	ITWARIYA	LC/981	3900	2145
934.	NARANDRA SINHG	C/15	3900	2145
935.	RAJKUMAR	SC897	3900	2145
936.	SHIV BALAK	C/932	3900	2145
937.	RAM NIWAS	C/487	3900	1677
938.	CHANDRA SHEKHAR	C/931	3875	2131
939.	KANHAIYA LAL	C/427	3875	2131
940.	KRIPA SHANKAR	C/989	3875	2131
941.	SAMYALAL	C\438	3875	2131
942.	MOHIT LAL	C/317	3875	1666
943.	NARAYAN SINGH	C/291	3875	1666
944.	INDRA LAL	C/154	3875	1666
945.	SHIV BAHOR	C/199	3875	1666

946.	RAM LAL	C/66	3875	1666
947.	GANESH PRASAD	C/743	3875	1666
948.	RANJIT SINGH	C/494	3875	1666
949.	MANIK RAM	C/306	3875	1666
950.	GANGA DIN	C/27	3875	1666
951.	LAKSHMI KANT	C/714	3875	1666
952.	CHHATRAPAL	C/930	3875	2015
953.	MOTI LAL	C/324	3875	1666
954.	SAMAY LAL	C/902	3875	1666
955.	MAN VISHRAM	C/25	3875	2131
956.	DAMODAR PRASAD TIWAI	C/588	3875	2131
957.	RAM SAJIVANAN	C/909	3875	2131
958.	PRADIP KUMAR	C/384	3875	2131
959.	RAJ KUMAR KOL	C/147	3875	2131
960.	MAHENDRA PATHAK	C/05	3875	2131
961.	CHANDRABHAN KOL	C/416	3875	2131
962.	MAHENDRA TRIPATHI	C/668	3875	2131
963.	BHANU PRAKSH GARG	C/315	3875	2131
964.	DHIRENDRA KUMAR	C/567	3875	2131
965.	JAYPRAKESH TIWARI	C/938	3875	2131
966.	A K PANDEY	C/ASSB	3820	2101
967.	SHIV NANDAN	C/127	3820	1643
968.	GAJENDRA DWIVEDI	C/DSB	3800	2090
969.	SHYAM SUNDAR	C/382	3800	1634
970.	RAMESH KUMAR	C/531	3800	1634
971.	SAMAY LAL	C/438	3800	1634
972.	GULAB PRASAD	C/430	3800	1634
973.	RAM YASH	C/474	3800	1634
974.	INDRA LAL MAJHI	C/484	3800	1634
975.	SATISH KUMAR	C/687	3800	1634
976.	JAI PRAKASH	C/429	3800	2090
977.	LAL MANI BASOR	C/120	3800	1634
978.	DHIRAJ KUMAR	C/111	3800	1634
979.	YOGENDRA PRASAD	C/783	3800	1634
980.	RASID KHAN	C/826	3800	2090
981.	MOHD. ASARAF ALI	C/432	3800	2090
982.	SIYA SHARAN	C/936	3800	2090
983.	SATYA NARAYAN	C/285	3800	2090
984.	AMIN MOHD.	C/556	3800	2090
985.	PRAMOD SHUKLA	C/226	3800	2090
986.	SUMESHWAR PRASAD	C/420	3800	2090
987.	SARMAN KUMAR	C/185	3800	2090
988.	SATYA NARAYAN	C/605	3800	2090
989.	KESHARI NANDAN	C/373	3800	2090
990.	PARMESHWAR DIN	C/510	3800	2090
991.	RAJENDRA SINGH	C/361	3800	2090
992.	MOHD. SAFIK KHAN	C/521	3800	2090
993.	DHARMENDRA TIWARI	C/837	3800	2090
994.	RAJ KUMAR SINGH	C/587	3800	2090
995.	SHIV KUMAR DUBEY	C/535	3800	2090
996.	VIJAY KUMAR	C/828	3800	2090

997.	VIVEKANAND	C/731	3800	2090
998.	MANGLESHWAR TIWARI	C/540	3800	2090
999.	JAGAT MANI VISKARAMA	C/946	3800	2090
1000.	PAWAN KUMAR SINHG	C21	3800	2090
1001.	RAMDEW MISHRA	C190	3800	2090
1002.	RAMSHUYASH PANDEY	C96	3800	2090
1003.	RAJESH TIWAI	C154	3800	2090
1004.	AJAY KUMAR	C/647	3800	2090
1005.	SURSARI PD.PANDEY	C/+++++	3740	2057
1006.	ASHOK KUMAR SINGH	HC	3740	2057
1007.	ASHOK KUMAR DUBEY	C/175	3725	2049
1008.	MAHENDRA KUMAR	C/105	3725	1602
1009.	VISHWA NATH	C/222	3725	1602
1010.	SHRI NIWAS	C/458	3725	1602
1011.	SURENDRA SINGH	C/453	3725	2049
1012.	RAMASHRAY	C/321	3725	2049
1013.	SURYA MANI	C/217	3725	1602
1014.	KAMALA PRASAD	C/65	3725	1602
1015.	RAM PAL KOL	C/754	3725	1602
1016.	SANTOSH KUMAR	C/121	3725	1602
1017.	DEVENDRA KUMAR	C/28	3725	1602
1018.	SOM DATT PANDEY	C/268	3725	1602
1019.	VIR BAHADUR	C/398	3725	2049
1020.	KISHORI GOPAL	C/193	3725	2049
1021.	SUSHIL KUMAR	C/257	3725	2049
1022.	KAILAS PRASAD	C/935	3725	2049
1023.	SHYAM LAL	C/515	3725	2049
1024.	RAJESH SINGH	C/539	3725	2049
1025.	UMA KANT	C/612	3725	2049
1026.	SHIV PRATAP SINGH	C/727	3725	2049
1027.	PUSPENDRA SINGH	C/304	3725	2049
1028.	PREM SHANKAR	C/723	3725	2049
1029.	RAJESH KUMAR	C/725	3725	2049
1030.	RAJMANI RAJAK	C816	3725	2049
1031.	SHASHI KUMAR	C/414	3725	1602
1032.	PREM LAL	C/929	3725	1602
1033.	DEVENDRA SINHG	CONS.	3650	2008
1034.	RAMAKANT SHUKLA	C	3650	2008
1035.	RAJ VARDHAN SINGH	C/11	3650	1570
1036.	LAL BAHADUR	C/919	3650	1570
1037.	PRAMOD SINGH	C/333	3650	1570
1038.	BABU LAL	C/854	3650	1570
1039.	NARENDRA PRASAD	C/326	3650	1570
1040.	DHARMENDRA KUMAR	C/465	3650	1570
1041.	RAJESH PRASAD	C/402	3650	1570
1042.	ASHOK KUMAR SINGH	C/81	3650	2008
1043.	ARUNENDRA TIWARI	C/241	3650	1570
1044.	RAM SUYAS	C/832	3650	1570
1045.	SATANAND SHUKLA	C/602	3650	1570
1046.	RAM BHAN PATEL	C/968	3650	2008
1047.	BRIJENDRA SINGH	C/980	3650	2008

1048.	VED MANI SAHU	C/951	3650	2008
1049.	ASHWINI KUMAR	C/681	3650	2008
1050.	SURENDRA KUMAR	C/408	3650	2008
1051.	RAJENDRA PRASAD	SC/289	3650	2008
1052.	BRAJESH PANDEY	C	3650	2008
1053.	RAJESH KUMAR TIWARI	C\725	3650	2008
1054.	SANTOSH KUM.SINHG	C140	3650	2008
1055.	MADHOU PRASAD	C/952	3575	1966
1056.	SHATRUDHAN PRASAD	C947	3575	1966
1057.	RAJESH VERMA	C/708	3575	1966
1058.	PAWAN KUMAR	C/21	3575	1537
1059.	KAILASH PRASAD	C/953	3575	1966
1060.	DINESH KOL	C/957	3575	1966
1061.	RAJESH SHUKLA	C/496	3575	1966
1062.	SAMAY LAL	C/958	3575	1966
1063.	RAM NARESH KOL	C/462	3575	1966
1064.	RAMAYAN PRASAD	C/963	3575	1966
1065.	SUNITA TIWAWRI	LC/658	3575	1966
1066.	PUSPRAJ TIWARI	C/503	3575	1966
1067.	KAMATH NATH PANDY	C/	3575	1966
1068.	JAYBHADUR	C\177	3575	1966
1069.	ASHOK KUMAR	C971	3575	1966
1070.	RAJENDRA PRASAD	C/954	3500	1505
1071.	VINOD KUMAR	C/273	3500	1925
1072.	OM PRAKAS KOL	C/960	3500	1925
1073.	DURGA TIWARI	LC/943	3500	1925
1074.	RANNU DEVI	LC/369	3500	1925
1075.	PANKAJ TRIPATHI	C/269	3500	1925
1076.	BHAGWAT PRASAD	C/509	3500	1925
1077.	ASHOK KUMAR	C/663	3500	1925
1078.	HAFEEJUR RAHMAN	C/	3500	1925
1079.	HASKAR TIWARI	C680	3500	1925
1080.	RIJMOHAN SINGH	50	3500	1925
1081.	ABRARUL HAQUE	HC(M)	3475	1911
1082.	SATENDRA MISHRA	C943	3425	1884
1083.	SHATRUDHAN PRASAD	C/947	3425	1473
1084.	DILIP KUMAR KOL	C/949	3425	1473
1085.	HARI PRASAD	C/118	3425	1473
1086.	GENDA LAL KOL	C/948	3425	1884
1087.	GOPAL MALI	C/965	3425	1473
1088.	GANGA PRASAD	C/977	3425	1473
1089.	OM PRAKASH KOL	C/959	3425	1473
1090.	KAMLESH PRASAD	C/978	3425	1473
1091.	BHOLA NATH SINGH	C/982	3425	1473
1092.	ACHHE LAL KOL	C/956	3425	1473
1093.	NITESH KUMAR SEN	C/966	3425	1473
1094.	ONKAR NATH	C/388	3425	1473
1095.	KRISHNA GOPAL KOL	C/955	3425	1473
1096.	RASHI RAMAN SAHU	C/964	3425	1473
1097.	MUNINDRA SINGH	C/973	3425	1473
1098.	DEV PRATAP SINGH	C/974	3425	1473

1099.	MULAYAM SINGH	C/969	3425	1473
1100.	DHARMENDRA	C/972	3425	1473
1101.	SANTOSH SINGH	C/140	3425	1884
1102.	RAHIMUDDIN KHAN	C/950	3425	1473
1103.	ASHOK KUMAR YADAV	C/944	3425	1473
1104.	PUSPENDRA DUBEY	C/522	3425	1884
1105.	SURESH UPADHYA	C/507	3425	1884
1106.	SHIVAJIT MISHRA	C/292	3350	1843
1107.	PRAKASH CHANDR MISRA	C	3350	1843
1108.	SANGEET KUMAR	C664	3350	1843
1109.	DILIP KUMAR TIWARI	C/759	3275	1801
1110.	AJAY KUMAR SONKAR	C/387	3275	1801
1111.	JAGJIT CHARMAKAR	C/942	3275	1801
1112.	3ULSHI DAS SAKET	C/207	3275	1801
1113.	RAMESH KUMAR	C/913	3275	1801
1114.	KRISHNANAND PASI	C/654	3275	1801
1115.	PARAS BANSAL	C/704	3275	1801
1116.	BALRAM PASI	C/559	3275	1801
1117.	RAM DAYAL BASOR	C/569	3275	1801
1118.	NARENDRA SINGH	C/718	3275	1801
1119.	DHARMENDRA PANDEY	C/979	3275	1801
1120.	UTTAM SINHG	C945	3275	1801
1121.	PRAKASH MISHRA	C/	3275	1408
1122.	SMT RAMA DEVI	R	3200	1760
1123.	RAKESH SINGH CHOOHAN	C/O	3200	1760
1124.	KRISHNA PAL SINGH	C/576	3200	1760
1125.	SHAILENDRA KUMAR	C/248	3200	1760
1126.	LALITA BHAGHEL	LC/166	3200	1760
1127.	LAXMEE DEVEE	LC/320	3200	1760
1128.	KU- NIRMALA MOORYA	LC/	3200	1760
1129.	SASHEE SILPEE	LC/	3200	1760
1130.	SAPNA SWANKER	C/560	3200	1760
1131.	SAJEET SINHG	C/233	3200	1760
1132.	MONOJ DWAVDI	C323	3200	1760
1133.	PRATIMA SINHG .	MC705	3200	1760
1134.	PAYAL AGARAWAL	M.C.613	3200	1760
1135.	K-B-SINGH	SI	3188	1753
1136.	RAJENDRA TIWARI	CON.3	3150	1733
1137.	ARUN KUMAR	R	3140	1727
1138.	RAM SUMIRAN DAHIYA	C/M	3140	1727
1139.	SHRIKANT TIWARI	C/972	3125	1719
1140.	RANJNA TIWARI	MC402	3125	1719
1141.	VIVAK DWIVDI	C-49	3085	1697
1142.	JAGDISH PRASAD	PEON	3080	1694
1143.	SANA EGAM	208	3050	1678
1144.	GYANEDRA MISHRA	C980	3050	1678
1145.	ANURAG TIWARI	CONS	3050	1678
1146.	AVINASH KUMAR YADAV	C/507	3050	1678
1147.	AJEET KUMAR	C\	3050	1678

1148.	AMRIS KUMAR	C/755	3050	1678
1149.	RAMDARESH PATEL	C238	3050	1678
1150.	VIVEEK KUMAR PANDEY	CONS	3050	1678
1151.	ABHISHEKH SINHG	CONS52	3050	1678
1152.	PUSPENDRA KUMARSHRMA	C138	3050	1678
1153.	GULSHER AHAMAD	C481	3050	1678
1154.	KAMLA PRASAD	C969	3050	1678
1155.	JAYSINHG	C984	3050	1678
1156.	KARAN SINHG	C988	3050	1678
1157.	BRAMAHA SINHG	C987	3050	1678
1158.	AMIT KUMAR PATEL	C\724	3050	1678
1159.	ARIVIND KUMAR SING3	C171	3050	1678
1160.	DEPENDRA SINHG	C	3050	1678
1161.	HARIOOM SHUKLA	C-694	3050	1678
1162.	VERENDRA TIWARI	C89	3050	1678
1163.	KUSHAL DATT TIWARI	C/	3050	1678
1164.	ACCHEALAL SINHG	C967	3050	1678
1165.	ARUN KUMAR CHOUBEY	C\792	3050	1678
1166.	PREMCHANDRA RATHORE	C974	3050	1678
1167.	HAR PRASD LODHEE	C461	3050	1678
1168.	DEEPCHANDRA VERMA	C983	3050	1678
1169.	RAJESH KU.SHAHU	C973	3050	1678
1170.	RAKESH VAIS	C986	3050	1678
1171.	MAHENDRA PRATAP	C985	3050	1678
1172.	RAMSINHG	C13	3050	1678
1173.	KRISHN KUMAR PATEL	C184	3050	1678
1174.	KAVINDRA KU-PATEL	C884	3050	1678
1175.	RAJESH PATEL	C881	3050	1678
1176.	DHIRENDRA SINGH	C975	3050	1678
1177.	SARITA TIWARI	LC 8	3050	1678
1178.	NISHA SINHG	LC 131	3050	1678
1179.	PUSPENDRA KUMARPATEL	C419	3050	1678
1180.	JAGDISH PR ASAD	C397	3050	1678
1181.	VIPENDR AGNIHOTRI	C172	3050	1678
1182.	SURRESH PRATAP SINGH	C\30	3050	1678
1183.	H R AHIRWAR	SI	2938	1263
1184.	SURAJ	SWEEPE R	2605	1433
1185.	LALTA PRASAD TIWARI	C/859	2600	1430
1186.	RAMADHAR	HC/584	2500	1375
1187.	BUDDHASEN	HC/270	2450	1348
1188.	LALLU LAL	C/401	2400	1320
1189.	RAM LAKHAN	C/614	2295	1262
1190.	GULAB SINGH	C/566	1900	1045
1191.	ASHOK KUMAR	C/971	1713	737
1192.	PRASUN SINGH	B/293/2	1525	839
1193.	ROHIT KUMAR	B/871/2	1525	839
1194.	ASIF KHAN	B/-----	1525	839
1195.	RAGHVENDRA YADAV	B/==	1525	839

1196.	SHANKAR SINGH	B/582/2	1525	839
1197.	AKHILESH SINGH	C/580/2	1525	839
1198.	AMIT SINGH	B/C---	1525	839
1199.	PREM SHANKAR	B/583/1	1525	839
1200.	SHANKAR DAYAL	C\675	1525	839
1201.	MAKARADWAJ TWARI	851\2	1525	839
1202.	SANDEEP KUMAR	B\CON.	1525	839
1203.	ARUN KUMAR CHOUBEY	B/O	1525	839
1204.	AMBICHSH SINHG	B/O	1525	839
1205.	TRIVENDRA KUMAR		1525	839
1206.	PUPENDRA KOOL		1525	839
1207.	RAM SUFAL	C/939	1148	631
1208.	RAM LAKHAN	C/573	950	523
1209.	ABHISHEKH SINGH	B/293/1	639	275

uks/%& I Hkh ds uke] oru rFkk dgy vkgj.k fd; s tkus okys Lok; Rrka i kfj rks"kd] i kfj rks"kd HkRrk , oa i kfj Jkfed ds fu/kkZ.k dh i) fr tks fu; ekoyh ea nh xbZ gkZ dk okLrfod foj.k fn; k tkOA

v/; k; &12 %euy&11½
iR; d vfhkdj.k dks vkofVr ctV

¼ Hkh ; kst uk vkj 0; ; i Lrkoka rFkk /ku forj.k dh l p uk½

12-1 fuekZj fodkl] rdudh dk; Z djus okys ykd i kf/kdj .ka ds fy, %
 ykd i kf/kdj.k ds iR; d vfhkdj.k dks vkofVr ctV dh l p uk] ftl eafd l Hkh
 ; kst uk vkj 0; ; i Lrkoka rFkk /ku forj.k dh l p uk gk fuEu ik: lk ea nA

o'kZ 2004&05 %

Ø- l a	; kst uk dk uke	dk; Z	dk; Z i kjHk gkus dk fnukad	dk; Z ds l eki u dk vuøfur fnukad	i Lrkfor ctV	LohNr ctV	'kkl u }kj k i nRr ¼d' rka e½	dg 0; ;	dk; Z dh xqkoRrk , oa l eki u djokus ds fy, ftEenkj vf/kdkjh
ykw ugha gkrk									

12-2 **vu; ykd i kf/kdj .ka ds fy, %**

l - Øa	Yk [kk 'kh"KZ	dk; Z dk uke	o'kZ	vkod/u ¼ lk; s yk [k½	0; ; ¼ lk; s yk [k½ ¼80&8&05 rd½
ykw ugh					

v/; k; &13 %euy&12½
vuñku@jkt l gk; rk dk; Øeka ds fØ; kko; u dh jhr

13-1 Ni; k fuEu ik: i ij tkudkj mi yC/k dj, a %

l - Øa	fooj.k	tkudkj
1-	dk; bÆ@; kst uk dk uke	xh'edkyhu [ky if" k{k.k f" kfoj] xteh.k [ksydin]efgyk [ksydin] [ky l æks dks vuñku vfhk; ku dks vuñku] ; øk l æ/k dks vuñku] [ky l kexh dæ] f[kykfM; ka dks i kRl kgu jey Hkr l fo/kkvka ds fodkl vkfn
2-	dk; bÆ@; kst uk ds i Hkkoh jgus dh l e; l hek	o'kZ 2005 ds vñj l Eilu djuk gA
3-	dk; bÆ ds HkkRrd , oa okf. kFT; d y{; ¼foxr o'kZ e½	foxr o'kZ mi jkDr [kys l s 900 f[kykMh ykHkkfoar gq s , oa 450]000-00 : i ; s [kpZ gq s gA
4-	vuñku l gk; rk i klr djus dh i fdz k	l Hkkvks }kj k vkonu djus ij
5-	i k=rk fefJr djus dh i fdz k	"kkl u }kj k fu/kkZjr eki n.M ds vuq kj
6-	fn; s tkus okys vuñku@l gk; rk	v/kkd j p uk ea 50 ifr- ds vk/kkj ij 2 yk [k : i ; s , oa

	dk foof.k	vunpu ea01 yk[k : i ; sfn; k x; k gAa
6-	vunpu l gk; rk dsforj.k dh ifdz k	ifyl v/kh{kd jhok }kjk xBr l fefr dsek/; e l s vkonu i = cyk; k tkdj vunpu dh jkf" k forfjr dh tkrh gA
7-	vkonu "kyd	fu% kyd
8-	vkonu i = dk ik: i	fu/kkZjr ik: i r\$ kj dj fn; k tkrk gSA
9-	vkonu djus dsfy; sdgka@fdl l s l Ei dz djs	ifyl v/kh{kd dk; ky; eaLFkkfir [ksy , oa; pd dY; k.k "kk[kk iHkkjh l s l Ei dz djA
10-	ifdz k l s l Ecfi/kr l eL; k gkaus j dgka l Ei dz djs	ifyl v/kh{kd jhok A
11-	mi yC/k /kujkf" k dk foof.k	o'kz 2005&06 dsfy; s3]60-000@& : i ; s dk vkoka/u [ksy xrfrof/k; k l pkfyr djus grq i klr gpZ gA

v/; k; &14 ½

14-0 fj; k; rki vuKki =ka rFkk i kf/kdkjka ds i kflrdriKka ds I cak eafooj.k

fujd

v/; k; &15 ½

15-0 NR; ka ds fuoZu ds fy, LFkfi r ekud@fu; e

ykad i kf/kdj.k }kjk vi usfofHkUu f0; kdyki ka@dk; Deka ds I Eiknu grq iz ksx fd, tkusokys ekud@fu; eka dk dk; Deokj fooj.k mi yC/k djka, aA

fo'kSk ugh

v/; k; &16 ½

16-0 byDVkfud : lk eami yC/k I puk, a

ftys ds vij/kks dh byDVkfud tkudkjh I hI h-vkbZ I - ds ccl kbW www.ncrb.nic.in & www.mppolice.nic.in& www.mppolice.gov.in i j mi yC/k gA

v/; k; &17 ½

I puk i klr djus ds fy, ukxfjdka dks mi yC/k I fo/kkvka dk fooj.k

17-1 I pukvka dks turk rd igpkus ds fy, foHkx@I xBu }kjk dh xbZ0; oLFkk dk fooj.k

• I puk i Vy	
• vfHkys[kks dk fujh{k.k	
• nLrkostka dh i fr i klr djus dh 0; oLFkk	

• mi yC/k foHkxh; ešuyy	
• ykd i kf/kdj.k dh ccl kbV	sp_rewa_2k@sanchar.net.in

v/; k; &18 ½ešuyy&17½
 vU; mi ; kxh tkudkfj ; ka

18-1 ykd i kf/kdj.k l stuekul }kjk l keU; r% i nS tkus okys iz' u o muds mRrj-
 iz' u & f" kdk; r ij ij D; k dk; bkgh dh xbZ
 mRrj & f" kdk; r i = dh tlp l EcI/kr vf/kdkjh&&& l sdjkbZxbZ o tlp ij &&&rF;
 ik; s

x; sA
 iz' u 2- vijkf/kd idj.kka ea vfhk; D; rks dh fxj- gpZ ; k ugh
 mRrj & vfhk; D; rks dh fxj- dh xbZ@ugh
 iz' u & 3- pkykuh dk; bkgh dh xbZ ; k ugh
 mRrj & gk@ugh
 iz' u & vfire ifronu vfhk rd ugh ikr gq/kA
 mRrj & ; fn pgsx; s vfhky[k ikr gksx; s gsrks rRdky mi yC/k dj k nh tkoskA ; fn
 vfhky[k mi yC/k ugh gsrks l EcI/kr l srRdky exkdj mi yC/k dj k; k tkoskA
 iz' u & ikl ikZ] pfj = l R; ki u] vkeI Zy k; l d l Ecakh fn; s x; s vkonu i = ij D; k gq/k
 mRrj % mi yC/k fjdKMZ ds vk/kkj ij tkudkj rRdky nh tkoskA

18-2 l puk ikr djus ds l cdk ea

• vkonu i = ¼ rFk l nHkZ ds fy, , d Hkjs gq vkonu i = dh ifr½	ik: i vkonu i = l ayXu gA
• 'kyd	"kkl u ds i ko/kku vud kj
• l puk vkonu i = ij fdl rjg l sekxh tk, & dN fVII	fyf[kr vkonu }kjk
• l puk u nuso vihy djus ds l cdk ea ukxfjd ds vf/kdkj o vihy djus dh ifØ; k	vi hyh; vf/kdkjh] i fyl v/kh[kd] i fyl egkfujh[kd] i fyl egkfun" kd] jkT; "kkl u , oaU; k; ky; ea vihy i Lrr dh tk l drh gSA

18-3 ykd i kf/kdj.k }kjk turk dksfn, tkus okys if'k{k.k ds l cdk ea-

• if'k{k.k dk; Øe dk uke o fooj.k	1-xke j{k l febr dk , d fnol h; if" k{k.kA
• if'k{k.k dk; Øe@; kstuk ds i Hkkoh jgus dh l e; & l hek	2-xke j{k l febr; ks dks i fyl l s l EcI/kr
• if'k{k.k dk; Øe dk mnas ;	dk; k dh tkudkj nh nsk , oa turk dk l g; kx ikr djuk
• if'k{k.k dk; Øe ds HkkSrd , oaokf.kT; d y{; ¼oxr o"lz e½	
• ykHkFkhZ dh i k=rk	
• i mka {kk, a ¼; fn gks rks	

• vupku@l gk; rk ¼; fn gks rkš	dkbz vupku ugh fn; k tk jgk gA
• fn, tkus okys vupku@l gk; rk dk fooj.k ¼ftl ea vupku dh jkf'k dk fooj.k gkš	
• vupku@l gk; rk dsforj.k dh ifØ; k	
• vkonu djus dsfy, dgka@fdl l sl Eidl dZ dja	1- vkonu djus ds fy; s ifyl v/kh{kd} vfrfjDr ifyl v/kh{kd}, oami ifyl v/kh{kd} ¼ed; k½ jhok 2- "kkl u }kjk fu/kkZj jkf" k vkonu ds l kfk l ayXu dja 3- vkonu ftu nLrkost ks dks n[kuk pkgrk gS vFkok udys pkgrs gS rks ml dk mYys[k dja
• vkonu 'kYd ¼tgkamfpr gkš	
• vl; 'kYd ¼tgkamfpr gkš	
• vkonu i = dk ik: lk ¼; fn vkonu l kns dkxt ij gkrk gS rks Ni; k ml dk mYys[k djrs gq; g crk, afd vkonudrkZ vkonu djrs l e; fdu ckrka dk o.ku djš	
• l ayXudka dh l ph	
• l ayXudka dk ik: i	
• vkonu djus dh ifØ; k	
• p; u ifØ; k	
• if'k{k.k dk; Øe dh l e; l kfj.kh ¼; fn gks rkš	
• if'k{k.k ds l e; ds ckjs ea vkonu dks l fpr djus dk rjhdk	
• if'k{k.k dk; Øeka ds ckjs ea turk dks tkx: d djus dsfy, ykd ikf/kdj.k }kjk fd, tkus okys dk; Z	
• foHkku Lrjka ij tS sfd ftyk Lrj ij Cykd Lrj ij bR; kfn ij if'k{k.k dk; Øeka ds ykHkkfFkZ, ka dh l ph rFkk vl; fooj.k	

18-4 ykd ikf/kdj.k }kjk fn, tkus okys iek.k i =] vuki fRr iek.k i = vkfn ds l æk ea tksfd eš; wy 13 ea u l fefyr gks

▪ iek.k i =] vuki fRr iek.k i = vkfn dk uke o fooj.k	1- ukdjh grq vuki fRr iek.k & i =] pfj = l R; ki u]" kL = yk; l d 2- vkonu i = ifyl v/kh{kd} jhok dks l Eckf/kr dj i Lrj dja 3- vkonu "kYd "kkl u }kjk fu/kkZj nj ds vuq kj ux n tek dja
▪ iek.k i =] vuki fRr iek.k i = vkfn i ltr djus grq ik = rk	
▪ vkonu djus dsfy, dgka@fdl l sl Eidl dZ dja	
▪ vkonu 'kYd ¼tgkamfpr gkš	
▪ vl; 'kYd ¼tgkamfpr gkš	
▪ vkonu i = dk ik: lk ¼; fn vkonu l kns dkxt ij gkrk gS rks Ni; k ml dk mYys[k djrs gq; g crk, afd vkonudrkZ vkonu djrs l e; fdu ckrka dk o.ku djš	
▪ l ayXudka dh l ph	
▪ l ayXudka dk ik: i	
▪ vkonu djus dh ifØ; k	

<ul style="list-style-type: none"> ▪ vkonu djus ds ckn ykd i kf/kdj .k ea gkus okyh i fØ; k ¼; gka ij ml i fØ; k dk foj .k na tks vkonu }kjk l kjh i kFkfedrk, a i jh djus ds l' pkr ykd i kf/kdj .k }kjk dh tkrh g½ 	4- vkonu i = i klr gkus ij ml dh rLnhd l Ecf/kr Fkkuk i Hkkjh] vufHkkxh; vf/kdkjh dsek/; e l s tkp djkbz tkdj ifronu l Ecf/kr dks inku fd; k tkrk g½
<ul style="list-style-type: none"> ▪ vkonu dh l kjh i kFkfedrk, a l gh rjg l s i jh djus ds lk' pkr i æk.k i =] vuki fRr i æk.k i =] vkfn tkjh djus ds fy, fu/kkZjr l e; vof/k 	
<ul style="list-style-type: none"> ▪ i æk.k i = ds i Hkkoh jgus dh l e; l hek ¼; fn gks rk½ 	
<ul style="list-style-type: none"> ▪ uohuhdj .k dh i fØ; k ¼; fn gks rk½ 	

18-5 ykd i kf/kdj .k ea gkus okys i ath; u ds l æk ea

<ul style="list-style-type: none"> ▪ i ath; u dk mnas ; 	foHkkxh; dk; k½ dk l a knu
<ul style="list-style-type: none"> ▪ vkond dh i k =rk 	foHkkxh; fu; eka ds vuq i mi yC/k dj; s tkus okys nLrkost
<ul style="list-style-type: none"> ▪ i vka s kk, a ¼; fn gks rk½ 	mi jkDrkuq kj
<ul style="list-style-type: none"> ▪ vkonu djus ds fy, dgka fd l s l Ei dz dja 	i fyl v/kh{k d dk; k½; ea i fyl v/kh{k d l Eefk vkonu i =
<ul style="list-style-type: none"> ▪ vkonu 'kYd ¼t gka mpr g½ 	'kkl u }kjk fu/kkZjr .k ds vuq kj
<ul style="list-style-type: none"> ▪ vl; 'kYd ¼t gka mpr g½ 	mi jkDrkuq kj
<ul style="list-style-type: none"> ▪ vkonu i = dk i k: lk ¼; fn vkonu l kns dkxt ij gkrk gS rks Ni; k ml dk mYys[k djrs gq ; g crk, a fd vkonudrk½ vkonu djrs l e; fdu crka dk o.ku djs 	fu/kkZjr i i = ea fughr vkgirk ds vuq kj vko'; d l VhOfdV tks 'kkl u }kjk l e; & l e; ij fu/kkZjr fd; s x; s gSA
<ul style="list-style-type: none"> ▪ l ayXudka dh l p h 	'kkl u }kjk fu/kkZjr i i =ka ds vuq kj
<ul style="list-style-type: none"> ▪ l ayXudka dk i k: i 	'kkl u }kjk fu/kkZjr i i =ka ds vuq kj
<ul style="list-style-type: none"> ▪ vkonu djus dh i fØ; k 	dk; k½; ea vkonu v/kh{k d ds l Eefk i Lrph A
<ul style="list-style-type: none"> ▪ vkonu djus ds ckn ykd i kf/kdj .k ea gkus okyh i fØ; k ¼; gka ij ml i fØ; k dk foj .k na tks vkond }kjk l kjh i kFkfedrk, a i jh djus ds lk' pkr ykd i kf/kdj .k }kjk dh tkrh g½ 	i fyl v/kh{k d }kjk x fBr ykd l p u k vf/kdkjh vrfjDr i fyl v/kh{k d , oa l gk; d ykd l p u k vf/kdkjh mi i fyl v/kh{k d jhok }kjk cuk; s x; s des/h ds l Eefk fopkj A
<ul style="list-style-type: none"> ▪ i Hkkoh jgus dh l e; & l hek ¼; fn gks rk½ 	&
<ul style="list-style-type: none"> ▪ uohuhdj .k dh i fØ; k 	&

18-6 ykd i kf/kdj .k (Municipal Corporation, Trade tax, entertainment tax, vkfn½

}kjk VDI ysus ds l ædk ea
 l e; & l e; ij 'kkl u }kjk fu/kkzjr Ql yokj typØ ds vuq kj ty 'kq'd dk
 fu/kkzj.k A

▪ VDI dk uke o fooj.k	0055 i fyi "kh' k@uxn
▪ VDI ysus dk mnns ;	Qk/ks dka h bR; kfn ea yxus okyk 0; ;
▪ VDI fu/kkzj.k djus ds fy, eki nM o i fØ; k	'kkl u }kjk fu/kkzjr dh tkrh gSA
▪ Cms (major) fMQRYVI Z dh l pph	&

18-7 ykcd i kf/kdj.k }kjk ukxfjdka dks nh tkus okys fctyh@i kuh ds duD'ku j duD'ku dks
 vLFkk; h@LFkk; h : lk l sfopNnu vkfn ds l ædk ea ¼; g l puk LFkkuh; fudk; tS suxj
 ikfydk@uxj ifj"kn@upcl }kjk nh tk l drh g%

▪ vkond dh ik=rk	fujad
▪ i wka \$kk, a ¼; fn gks rks%	
▪ vkonu djus ds fy, dgka@fd l l s l Ei dZ dja	
▪ vkonu 'kq'd ¼t gka mfpr gks%	
▪ vl; 'kq'd@ns ¼t gka mfpr gks%	
▪ vkonu i = dk ik: lk ¼; fn vkonu l kns dx t ij gksrk gS rks Ni; k ml dk mYys[k djrs gg ; g crk, afd vkonudrk vkonu djrs l e; fdu ckrka dk o.ku dj%	
▪ l ayXuka dh l pph	
▪ l ayXudka dk ik: i	
▪ vkonu djus dh i fØ; k	
▪ vkonu djus ds ckn ykcd i kf/kdj.k ea gkus okyh i fØ; k ¼; gka ij ml i fØ; k dk fooj.k na tks vkond }kjk l kjh i kFfedrk, a ijh djus ds lk'pkr ykcd i kf/kdj.k }kjk dh tkrh g%	
▪ fcy ea iz ksc fd, x, 'kcnka dk fooj.k	
▪ fcy rFkk vl; l okvka ds l ædk ea l eL; k gkus dh fLFkr ea l Ei dZ l puk	
▪ VfjQ rFkk vl; ns	

18-8 ykcd i kf/kdj.k }kjk ukxfjdka dks nh tkus okyh vl;
 l okvka dk fooj.k fujad

vkonu i = dk ik: i

ifr]

ifyl v/kh{kd]
ftyk&jhok

fo'k; %& nLrkostks dh udys @ tkudkjh mi yC/k djkusckorA

egkn;]

fo'k; kUrxZ fuonu gSfd ePsfuEufyf[kr nLrkostks dh udy@ tkudkjh mi yC/k
djkusdk d'V djsA "kkI u }kjk fu/kkZjr "kYd uxn@pkyku ds I kFk voykduKkZ I ayXu gS
%vkond fuEufyf[kr nLrkostks ea tks nLrkost ; k tkudkjh pkgrk gSml dk mYys[k vkonu i = ea
dj I drk gA½

- 1- vfire ifronu ftI ea exZ bA/heA ku] ih, e- fjiW vfire fjiW] izl =ifr
- 2- pfj= I R; ki u ds I Ecak ea tkudkjh
- 3- vkEl Zyk; I d I Ecakh vkonu i = ij dh xbZ dk; bkgH I Ecakh tkudkjhA
- 4- iLr vkonu i = ij dh xbZ dk; bkgH I Ecakh nLrkostks dh udyA
- 5- foHkkxh; tkp I s I Ecak/k nLrkost] I ok i [Lrdk dh udy] thih, Q ikl cp dh udy]
oru]] vodk" k] ; k=k&HRRrk] esMdy] vij/k]exZ bR; kfn I s I Ecak/k tkudkjh

I ayXu %&

vkond dk uke
fi rk dk uke
in]
ijk irk